

# H12-211.prepaway.premium.exam.279q

Number: H12-211  
Passing Score: 800  
Time Limit: 120 min  
File Version: 9.0



**H12-211**

**Huawei Certified Network Associate- Huawei Networking Technology and Device**

**Version 9.0**

## Exam A

### QUESTION 1

An administrator currently manages AR2200 devices in the network through a single password, however the company wishes to introduce another two administrators and provide unique user credentials and privilege levels for telnet access to the network devices.

What action can be taken? (Choose three)

- A. Configure three users under the AAA-view, and assign each a different password.
- B. The authentication mode must be changed to AAA.
- C. Each administrator must be assigned a privilege level.
- D. A public IP address must be assigned to each user for telnet access

**Correct Answer:** ABC

**Section:** (none)

**Explanation**

**Explanation/Reference:**

### QUESTION 2

Which of the following authentication methods are supported for Telnet users? (Choose three)

- A. Password authentication
- B. AAA local authentication
- C. MD5 authentication
- D. No authentication

**Correct Answer:** ABD

**Section:** (none)

**Explanation**

**Explanation/Reference:**

### QUESTION 3

On Huawei AR G3 Series routers, which authentication modes does AAA support? (Choose all that apply.)

- A. None
- B. Local
- C. Radius
- D. 802.1X

**Correct Answer:** ABC

**Section:** (none)

**Explanation**

**Explanation/Reference:**

### QUESTION 4

```
[RTA]aaa
[RTA-aaa]domain huawei
[RTA-aaa-domain-huawei]authentication-scheme au1
[RTA-aaa-domain-huawei]authentication-scheme au2
```

Refer to the configuration output. RTA has been configured using AAA as shown, and associated with the "huawei" domain. For users in the huawei domain, which authentication-scheme will be used?

- A. au1
- B. au2
- C. au1 will be used. When au1 is deleted, users will use au2
- D. au2 will be used. When au2 is deleted, users will use au1

**Correct Answer:** B

**Section:** (none)

**Explanation**

**Explanation/Reference:**

#### QUESTION 5

A user accesses a server supporting AAA, for which the authorization mode on the AAA server has been configured using the command "authorization-mode hwtacacs if-authenticated".

Which of the following statements regarding this command are true? (Choose three).

- A. If the hwtacacs server fails to respond, the user will be authenticated using local authentication.
- B. If the hwtacacs server fails to respond, the user will be authenticated using remote authentication.
- C. If the hwtacacs server fails to respond, the user will bypass authentication.
- D. The hwtacacs server will authorize the user.

**Correct Answer:** ABD

**Section:** (none)

**Explanation**

**Explanation/Reference:**

#### QUESTION 6

Which of the following descriptions regarding eSight is not correct?

- A. eSight is used to monitor and manage enterprise networks.
- B. eSight supports only Huawei devices.
- C. eSight supports WLAN management and monitoring of hotspot coverage.
- D. eSight supports the backup of configuration files and network traffic analysis.

**Correct Answer:** B

**Section:** (none)

**Explanation**

**Explanation/Reference:**

#### QUESTION 7

What of the following statements is correct regarding access control list types and ranges?

- A. A basic ACL value ranges from 1000-2999
- B. An advanced ACL value ranges from 3000-4000
- C. A layer 2 ACL value ranges from 4000-4999
- D. An interface ACL value ranges 1000-2000

**Correct Answer:** C

**Section:** (none)

**Explanation**

**Explanation/Reference:**

#### QUESTION 8

Which of the following parameters is not used by Advanced ACL?

- A. Source interface
- B. Destination port number
- C. Protocol number
- D. Time-range

**Correct Answer:** A

**Section:** (none)

**Explanation**

**Explanation/Reference:**

#### QUESTION 9

```
[RTA]acl 2001
[RTA-acl-basic-2001]rule permit source 10.0.1.0 0.0.0.255
[RTA-acl-basic-2001]rule deny source 10.0.1.0 0.0.0.255
```

Refer to the configuration output. Which of the following statements regarding ACL 2001 is correct?

- A. Packets from network 10.0.1.0/24 network will be denied.
- B. Packets from network 10.0.1.0/24 network will be permitted.
- C. Packets destined for network 10.0.1.0/24 will be denied.
- D. Packets destined for network 10.0.1.0/24 will be permitted.

**Correct Answer:** B

**Section:** (none)

**Explanation**

**Explanation/Reference:**

#### QUESTION 10

```
[RTA]acl 2002
[RTA-acl-basic-2002]rule permit source 20.1.1.1 0
[RTA-acl-basic-2002]rule permit source 30.1.1.1 0
```

Refer to the configuration output. A network administrator configured the ACL on router RTA, as shown.

Which of the following statements regarding the rule order are correct? (Choose two).

- A. The rule-number of the first rule is 1
- B. The rule-number of the first rule is 5
- C. The rule-number of the second rule is 2
- D. The rule-number of the second rule is 10

**Correct Answer:** BD

**Section:** (none)

**Explanation**

**Explanation/Reference:**

#### QUESTION 11

Following a failure of services in the network, an administrator discovered that the configuration in one of the enterprise routers had been changed.

What actions can be taken by the administrator to prevent further changes? (Choose three)

- A. The administrator should limit access by setting the login privilege of users to 0.
- B. The administrator should configure AAA to manage user authorization on the router.
- C. The administrator should configure an ACL to allow only the administrator to manage the router.
- D. The administrator should configure port-security on the router.

**Correct Answer:** ABC

**Section:** (none)

**Explanation**

**Explanation/Reference:**

#### QUESTION 12

```
[RTA]acl 2001
[RTA-acl-basic-2001]rule 20 permit source 20.1.1.0 0.0.0.255
[RTA-acl-basic-2001]rule 10 deny source 20.1.1.0 0.0.0.255
```

Refer to the configuration output. Which of the following statements is correct regarding the configuration of the ACL on RTA?

- A. Packets from network 20.1.1.0/24 network will be denied.
- B. Packets from network 20.1.1.0/24 network will be permitted.
- C. Packets destined for network 20.1.1.0/24 will be denied.
- D. Packets destined for network 20.1.1.0/24 will be permitted.

**Correct Answer:** A

**Section:** (none)

**Explanation**

**Explanation/Reference:**

#### QUESTION 13

```
[RTA]acl 2001
[RTA-acl-basic-2001]rule deny source 172.16.1.1 0.0.0.0
[RTA-acl-basic-2001]rule deny source 172.16.0.0 0.255.0.0
```

Refer to the configuration output. Which of the following statements are correct regarding the configuration of the ACL on RTA? (Choose two).

- A. Packets from network 172.16.1.1/32 will be denied.
- B. Packets from network 172.16.1.0/24 will be denied.
- C. Packets from network 172.17.1.0/24 will be denied.
- D. Packets from network 172.18.0.0/16 will be denied.

**Correct Answer:** AD

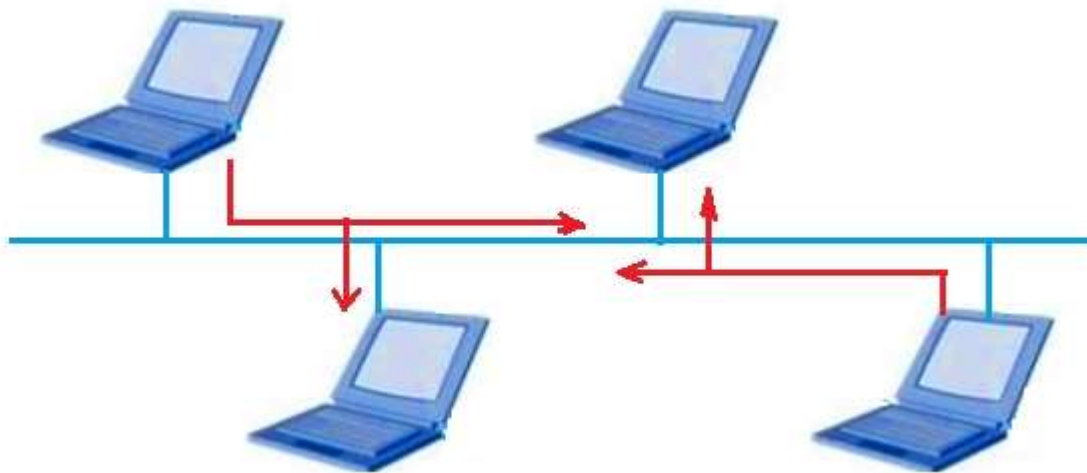
**Section:** (none)

**Explanation**

**Explanation/Reference:**

#### QUESTION 14

The network administrator wants to improve the performance of network transmission, what steps can the administrator take? (Choose two)



- A. Change the work mode to full duplex of each end station.
- B. Link the end stations together using a switch.
- C. Change the work mode to half duplex of each end station.
- D. Link the end stations together using a hub.

**Correct Answer:** AB

**Section:** (none)

**Explanation**

**Explanation/Reference:**

#### QUESTION 15

On Huawei switch, which of the following commands can be used to set port duplex mode as "auto"

negotiation"? (Choose two)

- A. duplex negotiation auto
- B. duplex auto-negotiation
- C. duplex auto
- D. undo duplex

**Correct Answer:** CD

**Section:** (none)

**Explanation**

**Explanation/Reference:**

#### **QUESTION 16**

The network administrator wishes to transmit data between two end stations. The network interface cards of both devices operates at 100Mbps however one supports half duplex while the other uses full duplex mode.

What will occur as a result?

- A. The end stations cannot communicate.
- B. The end stations can communicate, but data may be lost during transmission of large amounts of traffic.
- C. The end stations will operate normally
- D. The end stations can communicate, but speed is different during transmission of large amounts of traffic.

**Correct Answer:** B

**Section:** (none)

**Explanation**

**Explanation/Reference:**

#### **QUESTION 17**

An Ethernet port can work one of three duplex modes, whereas an Optical Ethernet port only supports one single mode.

Which of the following represents this mode?

- A. Full-duplex
- B. Half-duplex
- C. Auto-negotiation
- D. Simplex

**Correct Answer:** A

**Section:** (none)

**Explanation**

**Explanation/Reference:**

#### **QUESTION 18**

While inspecting packets in the network, a network administrator discovers a frame with the destination MAC address of 01-00-5E-A0-B1-C3.

What can the administrator determine from this?

- A. The MAC address is a unicast address.
- B. The MAC address is a broadcast address
- C. The MAC address is a multicast address.
- D. The MAC address is incorrect.

**Correct Answer:** C

**Section:** (none)

**Explanation**

**Explanation/Reference:**

#### QUESTION 19

According to OSI reference model, which layer is responsible for end to end error checking and flow control?

- A. Physical layer
- B. Data link layer
- C. Network layer
- D. Transport layer

**Correct Answer:** D

**Section:** (none)

**Explanation**

**Explanation/Reference:**

#### QUESTION 20

Which of the following mechanisms are used for flow control? (Choose three)

- A. Acknowledgement
- B. Buffering
- C. Source quench messages
- D. Windowing

**Correct Answer:** BCD

**Section:** (none)

**Explanation**

**Explanation/Reference:**

#### QUESTION 21

Source Destination Protocol Info

```
10.0.12.1 10.0.12.2 TCP 50190 > telnet [SYN] Seq=0 Win=8192 Len=0 MSS=1460
10.0.12.2 10.0.12.1 TCP telnet> 50190 [SYN, ACK] Seq=0 Ack=1 Win=8192 Len=0
MSS=1460
10.0.12.1 10.0.12.2 TCP 50190 > telnet [ACK] Seq=1 Ack=1 Win=8192 Len=0
```

Refer to the capture output. The administrator has captured three packets in the network. Which statement regarding the captured packets is incorrect?

- A. This packets represent a TCP three-way handshake process.
- B. 10.0.12.1 is the telnet server, while 10.0.12.2 is the telnet client.

- C. The three packets contain no application data.
- D. 10.0.12.1 uses port 50190 to build the telnet connection.

**Correct Answer:** B

**Section:** (none)

**Explanation**

**Explanation/Reference:**

#### **QUESTION 22**

An Ethernet frame is captured by network protocol analyzer tool and the value of Type/Length field is 0x0800.

Which of the following statements about the frame are correct? (Choose two)

- A. The frame structure of the frame is Ethernet\_II
- B. The frame structure of the frame is 802.3
- C. Its upper layer protocol is IP
- D. Its upper layer protocol is IPX

**Correct Answer:** AC

**Section:** (none)

**Explanation**

**Explanation/Reference:**

#### **QUESTION 23**

Which of the following descriptions regarding the TTL field of the IP packet is correct?

- A. The TTL defines how many packets the source can send.
- B. The TTL defines the duration during which the source can send packets.
- C. The TTL value will decrement by 1 each time the packet is routed.
- D. The TTL value will increment by 1 each time the packet is routed.

**Correct Answer:** C

**Section:** (none)

**Explanation**

**Explanation/Reference:**

#### **QUESTION 24**

Which of the following statements are correct about TTL field in IP packet? (Choose two)

- A. The maximum value of TTL is 65535.
- B. Normally, it's impossible for a router to receive a packet whose TTL is zero.
- C. The main purpose of TTL is to prevent IP packets from circulating endlessly in a network which can consume a lot of bandwidth.
- D. TTL value will be decremented as a packet is passed through the network devices such as hub, LAN switch and router.

**Correct Answer:** BC

**Section:** (none)

**Explanation**

**Explanation/Reference:**

**QUESTION 25**

In the case of Huawei router, what is the "-" parameter in a Ping command issued on a VRP operating system used to set?

- A. Interface for sending an Echo Request packet
- B. Source IP address for sending an Echo Request packet
- C. Interface for receiving an Echo Reply packet
- D. Destination IP address for receiving an Echo Reply packet

**Correct Answer:** A

**Section:** (none)

**Explanation**

**Explanation/Reference:**

**QUESTION 26**

To provide the information about the IP addresses that a user packet traverses along the path to the destination, which of the following does Tracert record in each expired ICMP TTL packet?

- A. Destination port
- B. Source port
- C. Destination IP address
- D. Source IP address

**Correct Answer:** D

**Section:** (none)

**Explanation**

**Explanation/Reference:**

**QUESTION 27**

Which of the following statements regarding the verification of IP connectivity are false? (Choose three)

- A. The ping 127.0.0.1 command can be used to check whether the network cable is correctly inserted into the host's Ethernet port.
- B. The ping command with the host IP address as the destination can be used to verify that the TCP/IP protocol suite is functioning correctly.
- C. The ping command can be used to verify connectivity between the host and the local gateway.
- D. The command "ipconfig /release" can be used to check connectivity problems between the host and the local gateway.

**Correct Answer:** ABD

**Section:** (none)

**Explanation**

**Explanation/Reference:**

**QUESTION 28**

A network administrator uses the ping command to check for points of failure in the network.

Which protocols will be used during this process? (Choose two)

- A. ICMP
- B. TCP
- C. ARP
- D. UDP

**Correct Answer:** AC

**Section:** (none)

**Explanation**

**Explanation/Reference:**

#### QUESTION 29

A network administrator recently used tracert to trace the path to the destination IP address of an external website, however the trace path displayed only a timeout result.

Which of the following statements correctly explains the reason for this? (Choose two)

- A. The source router had shutdown the ICMP function.
- B. This destination IP address does not exist.
- C. The gateway cannot find a route to the destination.
- D. This is a normal phenomenon.

**Correct Answer:** BC

**Section:** (none)

**Explanation**

**Explanation/Reference:**

#### QUESTION 30

```
Ping 10.0.0.2: 56 data bytes, press CTRL_C to break
Reply from 10.0.0.2: bytes=800 Sequence=1 ttl=255 time=2 ms
Reply from 10.0.0.2: bytes=800 Sequence=2 ttl=255 time=10 ms
--- 10.0.0.2 ping statistics ---
 2 packet(s) transmitted
 2 packet(s) received
 0.00% packet loss
 round-trip min/avg/max = 2/6/10 ms
```

A network administrator uses the ping command to test connectivity to the destination 10.0.0.2 on a Huawei AR series router.

Which statement regarding the output is correct?

- A. The network administrator used the command ping -c 2 -s 800 10.0.0.2
- B. The network administrator used the command ping -a 2 -v 800 10.0.0.2
- C. The path between the source and destination is not OK.
- D. The network administrator changed the default TTL value.

**Correct Answer:** A

**Section: (none)**

**Explanation**

**Explanation/Reference:**

**QUESTION 31**

Which of the following statements explains the behavior of the ICMP redirect function? (Choose two)

- A. When a router receives data on the interface via which the same data needs to be forwarded, and the source is on the same segment as the next hop, an ICMP redirect message will be sent by the router to the source.
- B. When a router receives data on an interface, and the router's IP address matches the destination IP of the data, an ICMP redirect message will be sent by the router to the source.
- C. When a router receives data on the interface via which the same data needs to be forwarded, and the source is on the same segment as the next hop, an ICMP Redirect message will be sent by the source to the router.
- D. When a router receives data on the interface via which the same data needs to be forwarded, and the source is on a different segment from the next hop, an ICMP redirect message will be sent by the router to the source

**Correct Answer: AD**

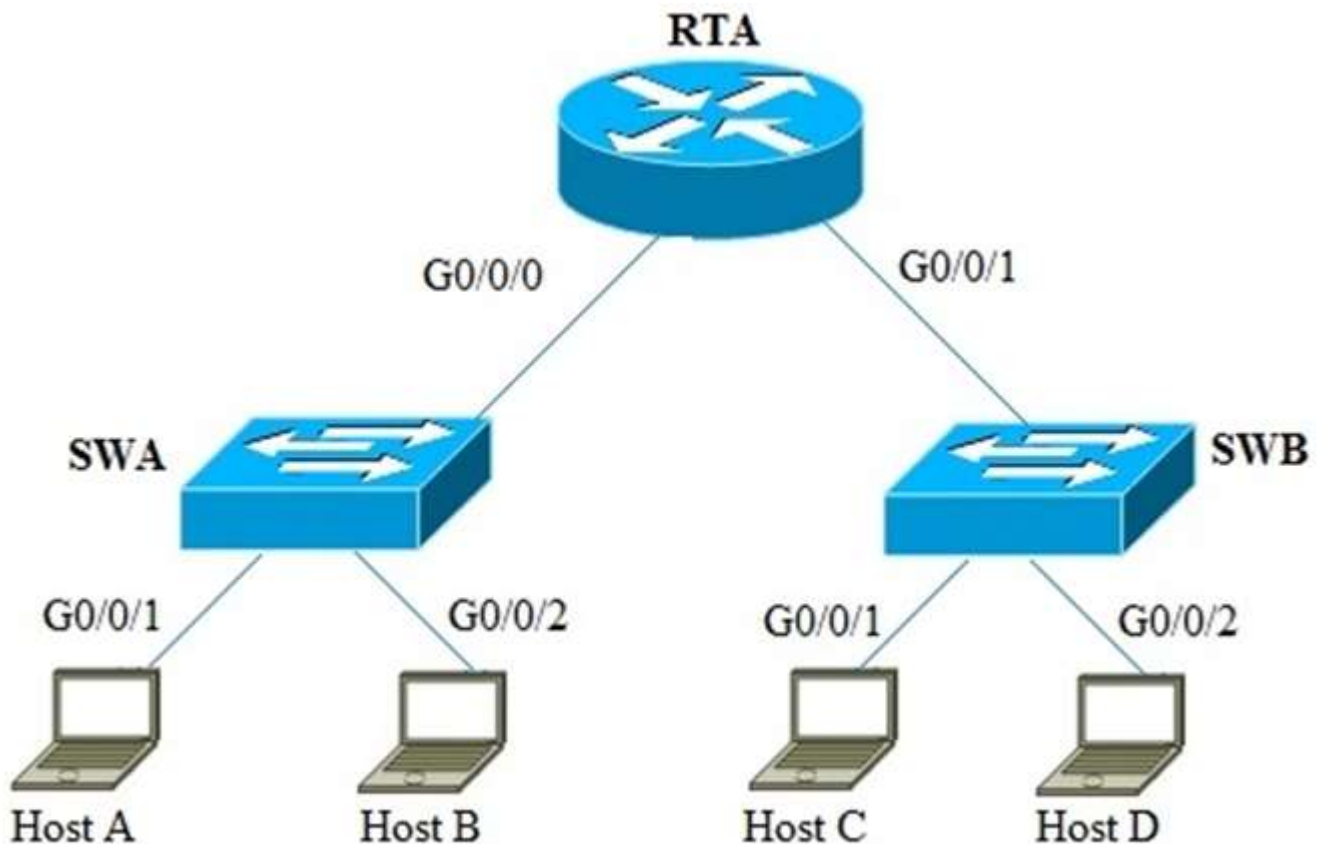
**Section: (none)**

**Explanation**

**Explanation/Reference:**

**QUESTION 32**

Host A wishes to send data to host C, and generates an ARP request to obtain the destination MAC address.



Which statement is true?

- A. The destination IP address of the ARP request is Host C.
- B. The destination MAC address of this ARP request is Host C.
- C. The destination IP address for the ARP request is a broadcast IP address.
- D. The destination MAC address of this frame is the MAC address of G0/0/0 on RTA.

**Correct Answer:** A

**Section:** (none)

**Explanation**

**Explanation/Reference:**

**QUESTION 33**

An ARP request is sent by host A to obtain the destination MAC address of host D.

Which statement is true about regarding the ARP reply?

- A. The destination MAC address of this frame is the MAC address of Switch A.
- B. The destination IP address of this packet is the VLANIF1 IP address of Switch A.
- C. The destination MAC address of this frame is the MAC address of Host A.
- D. The destination IP address of this packet is a broadcast IP address.

**Correct Answer:** C

**Section:** (none)

## Explanation

### Explanation/Reference:

#### QUESTION 34

Which of the following applications can be used to detect the path along which the data packets are transmitted from the source to the destination?

- A. Route
- B. Netstat
- C. Tracert
- D. Send

**Correct Answer:** C

**Section:** (none)

## Explanation

### Explanation/Reference:

#### QUESTION 35

How many probe packets are sent for each TTL value by default when "tracert" is used to detect the path along which packet is sent from source to destination?

- A. 3
- B. 4
- C. 6
- D. 8

**Correct Answer:** A

**Section:** (none)

## Explanation

### Explanation/Reference:

#### QUESTION 36

Which of the following types can ICMP packets be classified into? (Choose two)

- A. ICMP transport packet
- B. ICMP error reporting packet
- C. ICMP query packet
- D. ICMP application packet

**Correct Answer:** BC

**Section:** (none)

## Explanation

### Explanation/Reference:

#### QUESTION 37

On VRRP platform, which of the following parameters can be used together with the "ping" command to specify the source address of an echo request message?

- A. -a
- B. -s
- C. -d
- D. -n

**Correct Answer:** A

**Section:** (none)

**Explanation**

**Explanation/Reference:**

#### **QUESTION 38**

A router functioning as a Proxy receives an ARP request packet, but finds that the destination address in the packet is not intended for itself. In this case, what will the router do? (Choose two)

- A. Discard the packet.
- B. Check for a route that matches the destination address.
- C. Forward its MAC address to the ARP request sender after finding that a route to the destination address is available.
- D. Broadcast the ARP request packet.

**Correct Answer:** BC

**Section:** (none)

**Explanation**

**Explanation/Reference:**

#### **QUESTION 39**

Two end stations in a point-to-point network perform address resolution.

Which of the following statements is correct?

- A. The destination address of an ARP request from each station will be a unicast MAC address.
- B. The destination address of an ARP request from each station will be a broadcast IP address.
- C. The destination address of an ARP reply from each station will be a unicast MAC address.
- D. The destination address of an ARP reply from each station will be a broadcast MAC address.

**Correct Answer:** C

**Section:** (none)

**Explanation**

**Explanation/Reference:**

#### **QUESTION 40**

What will the destination MAC address be at the moment a frame is transmitted by the host, when the router is the IP destination?

- A. The MAC address of the switch.
- B. The MAC address of the router interface G0/0/0.
- C. The MAC address of the host.
- D. The destination MAC address will be a broadcast MAC address.

**Correct Answer:** D  
**Section:** (none)  
**Explanation**

**Explanation/Reference:**

#### QUESTION 41

Which of the following statements about gratuitous ARP packets are true? (Choose two)

- A. A system can determine whether conflicting IP addresses are used by sending a gratuitous ARP packet
- B. A gratuitous ARP packet uses the same format as an ARP request packet.
- C. A gratuitous ARP packet can help to update an IP address.
- D. A gratuitous ARP packet uses the same format as an ARP reply packet.

**Correct Answer:** AB  
**Section:** (none)  
**Explanation**

**Explanation/Reference:**

#### QUESTION 42

UDP is connectionless oriented, which of the following must be used in order to ensure reliability?

- A. Internet Protocol
- B. Application Layer Protocol
- C. Network Layer Protocol
- D. Transmission Control Protocol

**Correct Answer:** B  
**Section:** (none)  
**Explanation**

**Explanation/Reference:**

#### QUESTION 43

Refer to the graphic.



The administrator has configured an IP address for Host A and Host B, but had forgotten to configure a default gateway.

What effect will this have on the hosts?

- A. Neither host will be affected, and therefore will be able to communicate with the peer.
- B. Host A will be unable to connect to the router's G0/0/0 interface.
- C. Hosts will be unable to communicate unless arp-proxy is enabled on the router.
- D. The host will be unable to reach neither the local nor remote network destinations.

**Correct Answer:** C

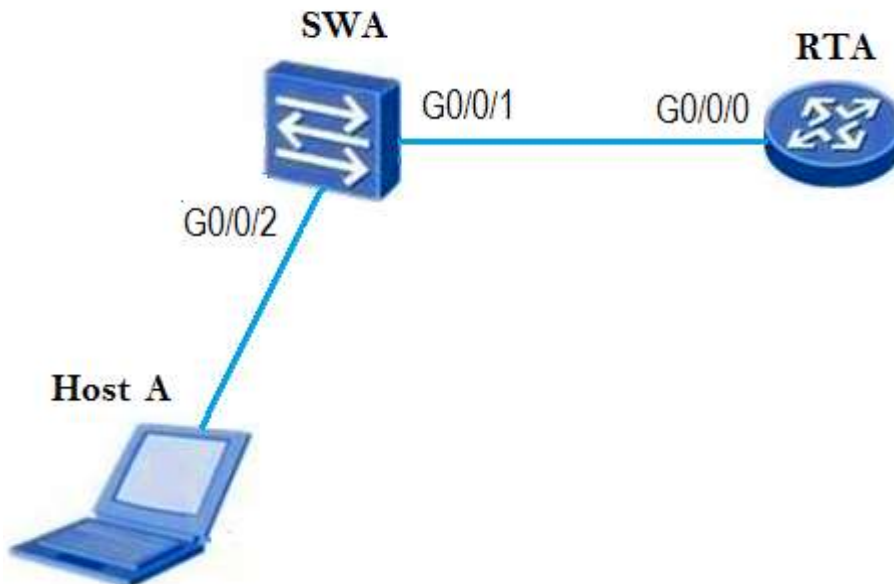
**Section:** (none)

**Explanation**

**Explanation/Reference:**

**QUESTION 44**

Refer to the graphic.



A host has established a telnet connection with the router attached to interface G0/0/0.

Which of the following statements are correct? (Choose all that apply.)

- A. The destination MAC address of a frame sent by the host will be the MAC address of the router interface G0/0/0.
- B. The destination MAC address of a frame sent by the host will be the MAC address of the switch.
- C. The destination port number in a segment header will have a value of 80.
- D. The destination IP address of a packet will be the IP address of the Router interface G0/0/0.

**Correct Answer:** AD

**Section:** (none)

**Explanation**

**Explanation/Reference:**

**QUESTION 45**

The administrator uses the ping command on the host to test connectivity to the website www.huawei.com.

The command line shows a request time out. The administrator displays the ARP entries for the host.

Which entry will be found in the ARP cache table of the host?

- A. The MAC address of the destination www.huawei.com will exist in the ARP cache.
- B. The MAC address of the switch will exist in the ARP cache.
- C. The IP address of the destination www.huawei.com will exist in the ARP cache.
- D. The MAC address of router interface G0/0/0, will exist in the ARP cache.

**Correct Answer:** D

**Section:** (none)

**Explanation**

**Explanation/Reference:**

#### QUESTION 46

When R2 forwards data to R3 from R1, which of the following items will change? (Choose two)

- A. The source MAC address
- B. The destination MAC address
- C. The source IP address
- D. The destination IP address

**Correct Answer:** AB

**Section:** (none)

**Explanation**

**Explanation/Reference:**

#### QUESTION 47

If Host B also configured the IP address as "192.168.1.1/24", an IP address conflict will occur. What will happen as a result?

- A. Host B will send an ICMP request to the destination with the configured IP address. If a reply is received, the host will notify of an address conflict.
- B. Host A will send a gratuitous ARP request to resolve the MAC address of the destination 192.168.1.1, for which Host B will reply.
- C. Host B will send a gratuitous ARP request to resolve the MAC address of the destination 192.168.1.1, for which Host A will reply.
- D. Host A will ignore any received ARP request intended for destination 192.168.1.1.

**Correct Answer:** C

**Section:** (none)

**Explanation**

**Explanation/Reference:**

#### QUESTION 48

```
<Quidway>display mac-address
```

```
-----  
MAC Address VLAN/VSI Learned-From Type
```

```
-----  
5489-98ec-f018 1/- GE0/0/13 dynamic
```

```
-----  
Total items displayed = 1
```

Refer to the graphic. A switch attempts to forward a frame to the MAC destination 5489-98ec-f011. What operation will occur on the switch?

- A. The switch will send a request to obtain the MAC address of 5489-98ec-f011.
- B. The switch will report that the destination is unreachable and report this to the source.
- C. The switch will flood the frame via all ports, with exception of the port on which the frame was received.
- D. The switch will drop the frame because it does not have an entry in its MAC address table.

**Correct Answer:** C

**Section:** (none)

**Explanation**

**Explanation/Reference:**

#### QUESTION 49

Host A has been connected to switch A and configured with an IP address.

When Host A initially forwards a frame, what action will be taken by Switch A?

- A. Switch A will drop this frame.
- B. Switch A will attempt to flood the frame to all ports except for the G0/0/1 interface.
- C. Switch A will forward the frame via ports G0/0/1, G0/0/2 and G0/0/3.
- D. Switch will receive this frame before returning the frame to G0/0/1.

**Correct Answer:** B

**Section:** (none)

**Explanation**

**Explanation/Reference:**

#### QUESTION 50

A server is linked to port interface G0/0/1 of a switch. The administrator wishes to allow only this server to be linked to this interface on the switch.

Which method can be used to achieve this?

- A. Configure a static ARP entry using the server's IP address and MAC address in the switch.
- B. Configure a static MAC address binding entry of the server's MAC address and the interface in the switch.
- C. Configure the default gateway of the switch to be the same as the server's IP address.
- D. It is not possible to enable a single device to be associated with an interface.

**Correct Answer:** B

Jul 24, 2019

**Section: (none)**

**Explanation**

**Explanation/Reference:**

**QUESTION 51**

An administrator connects two switches together in a local enterprise network. The ports of one switch support Fast Ethernet, while the ports of the other switch support Gigabit Ethernet. Hosts connected to one switch are able to communicate, however communication between the two switches fails.

What is the possible reason for this?

- A. The ports have disabled auto-negotiation.
- B. One port is supporting auto-negotiation, while auto-negotiation is disabled on the port of the other switch.
- C. The port of one switch is operating using half duplex mode, while the port of the other switch is using full duplex mode.
- D. A Fast Ethernet port cannot communicate directly with a Gigabit Ethernet port.

**Correct Answer: A**

**Section: (none)**

**Explanation**

**Explanation/Reference:**

**QUESTION 52**

A layer 2 LAN switch generates CAM table entries according to the ( ) of the received frame.

- A. Source MAC address
- B. Destination MAC address
- C. Source IP address
- D. Destination IP address

**Correct Answer: A**

**Section: (none)**

**Explanation**

**Explanation/Reference:**

**QUESTION 53**

Which of the following statements about collision domains and broadcast domains are correct? (Choose three)

- A. Devices connected to the same hub form a collision domain
- B. Devices connected to the same hub form a broadcast domain
- C. Devices connected to the same bridge form a collision domain
- D. Devices connected to the same bridge form a broadcast domain
- E. Devices connected to the same router form a broadcast domain

**Correct Answer: ABD**

**Section: (none)**

**Explanation**

**Explanation/Reference:**

**QUESTION 54**

Which of the following statements regarding layer-2 switch is incorrect?

- A. The switch learns MAC addresses automatically.
- B. The layer-3 header is modified before the received packet is transmitted.
- C. The layer-2 header is modified before the received packet is transmitted.
- D. The layer-2 LAN switch operates at data link layer.

**Correct Answer:** B

**Section:** (none)

**Explanation**

**Explanation/Reference:**

**QUESTION 55**

```
[R1]display interface GigabitEthernet0/0/0
GigabitEthernet0/0/0 current state : Administratively DOWN
Line protocol current state : DOWN
```

Refer to the display output. What can be determined based on the output of the display command?

- A. Interface Gigabit Ethernet 0/0/0 is connected to a wrong cable
- B. Interface Gigabit Ethernet 0/0/0 is not associated with an IP address
- C. Interface Gigabit Ethernet 0/0/0 is not associated with a dynamically defined route.
- D. Interface Gigabit Ethernet 0/0/0 has been manually shut down by an administrator.

**Correct Answer:** D

**Section:** (none)

**Explanation**

**Explanation/Reference:**

**QUESTION 56**

Which of the following statements regarding static and dynamic routing is incorrect?

- A. The static route can be easily configured and managed on the enterprise network.
- B. The use of dynamic routing is more convenient for the administrator to manage the network following network convergence.
- C. The static route can automatically recover when a link failure is encountered.
- D. Dynamic routing will use more resources than static routes.

**Correct Answer:** C

**Section:** (none)

**Explanation**

**Explanation/Reference:**

**QUESTION 57**

Which of the following are routed protocols? (Choose all that apply.)

- A. IP

- B. OSPF
- C. BGP
- D. IPX

**Correct Answer:** AD

**Section:** (none)

**Explanation**

**Explanation/Reference:**

#### **QUESTION 58**

Which of the following statements regarding the routing table are correct? (Choose all that apply.)

- A. The next hop in the routing table is redundant because the outgoing interface can be used for packet forwarding.
- B. The routes from generated by different protocols have different preferences.
- C. The metrics of different routing protocols are comparable.
- D. The metrics of different routing protocols are not comparable

**Correct Answer:** BD

**Section:** (none)

**Explanation**

**Explanation/Reference:**

#### **QUESTION 59**

Which of the following commands can be used to display the routing table on a Quidway router?

- A. display ip path
- B. display ip routing-table
- C. display interface
- D. display current-configuration

**Correct Answer:** B

**Section:** (none)

**Explanation**

**Explanation/Reference:**

#### **QUESTION 60**

Which of the following entries is not included in the routing table?

- A. source address
- B. next hop
- C. destination address
- D. cost

**Correct Answer:** A

**Section:** (none)

**Explanation**

**Explanation/Reference:**

**QUESTION 61**

Which of the following problems are caused by routing loops? (Choose three)

- A. Slow convergence
- B. Packets circulate between routers
- C. Router restarting
- D. Inconsistency of routing information

**Correct Answer:** ABD

**Section:** (none)

**Explanation**

**Explanation/Reference:**

**QUESTION 62**

An administrator wishes to manage the router in the remote branch office, which method can be used?

- A. Telnet
- B. FTP
- C. Console Connection
- D. DHCP

**Correct Answer:** A

**Section:** (none)

**Explanation**

**Explanation/Reference:**

**QUESTION 63**

The administrator cannot use telnet to manage the AR2200. The administrator is able to verify connectivity to the router and has been informed that other administrators have no difficulties using telnet.

Which statements describe the possible reasons for this problem? (Choose all that apply.)

- A. The user's status has been blocked
- B. The user's privilege level has been changed to 0.
- C. The user has been deleted.
- D. The telnet service in the AR2200 router has been disabled.

**Correct Answer:** AC

**Section:** (none)

**Explanation**

**Explanation/Reference:**

**QUESTION 64**

A user logged into a VRP supported device through telnet, but when attempting to configure the device, found that he is unable to use the system-view command to enter the system-view.

What are the possible reasons for this? (Choose two)

- A. The device's VTY interface only provides permission for some telnet users to run the system-view command.
- B. The user's telnet software restricts use of this command.
- C. The user's privilege level is lower than the level associated with the system-view command.
- D. The system-view command privilege level is lower than the level associated with the user.

**Correct Answer:** AC

**Section:** (none)

**Explanation**

**Explanation/Reference:**

**QUESTION 65**

The users who log on the router through Telnet are not permitted to configure IP address.

What is the possible reason?

- A. Communication failures occur between the user and the router.
- B. The authentication mode of Telnet is set incorrectly.
- C. Privilege level of Telnet is set incorrectly.
- D. SNMP parameters are set incorrectly.

**Correct Answer:** C

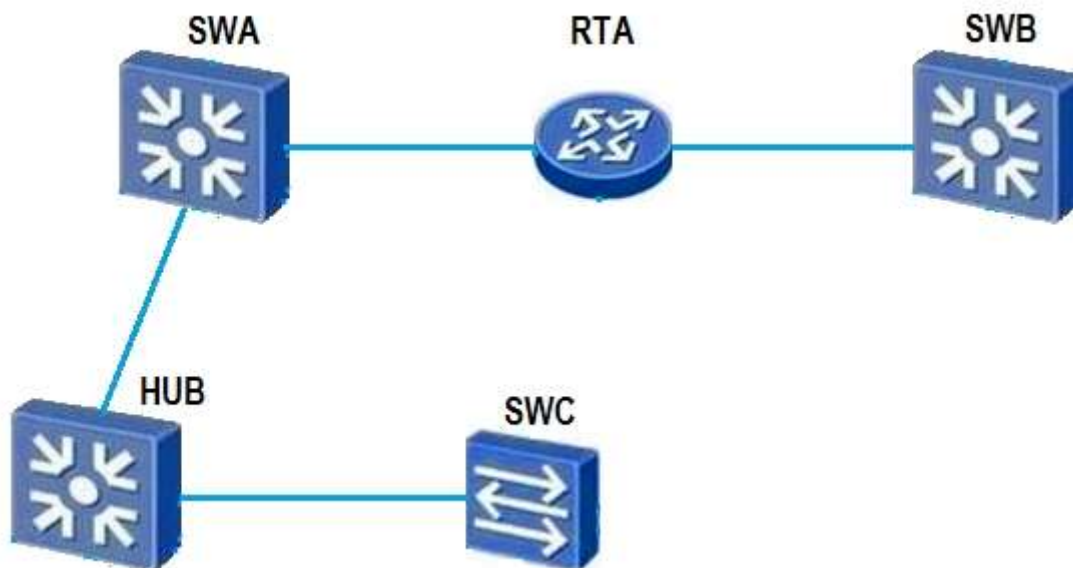
**Section:** (none)

**Explanation**

**Explanation/Reference:**

**QUESTION 66**

Which of the following statements are correct? (Choose two)



- A. A single collision domain exists between RTA and SWC.
- B. A single broadcast domain exists between SWA and SWB.

- C. A single collision domain exists between SWA and SWC.
- D. A single broadcast domain exists between SWA and SWC.

**Correct Answer:** CD

**Section:** (none)

**Explanation**

**Explanation/Reference:**

**QUESTION 67**

On the interface serial 1/0/1 of RTA, the command “ip address unnumbered interface loopback 0” has been configured.



Which following statements are correct? (Choose two).

- A. The IP address of interface serial 1/0/1 is 10.1.1.1/24
- B. The IP address of interface serial 1/0/1 is 10.1.1.1/32
- C. The route entry 10.1.1.0/24 exists in RTA's routing-table
- D. The route entry 10.1.1.0/24 does not exist in RTA's routing-table

**Correct Answer:** BD

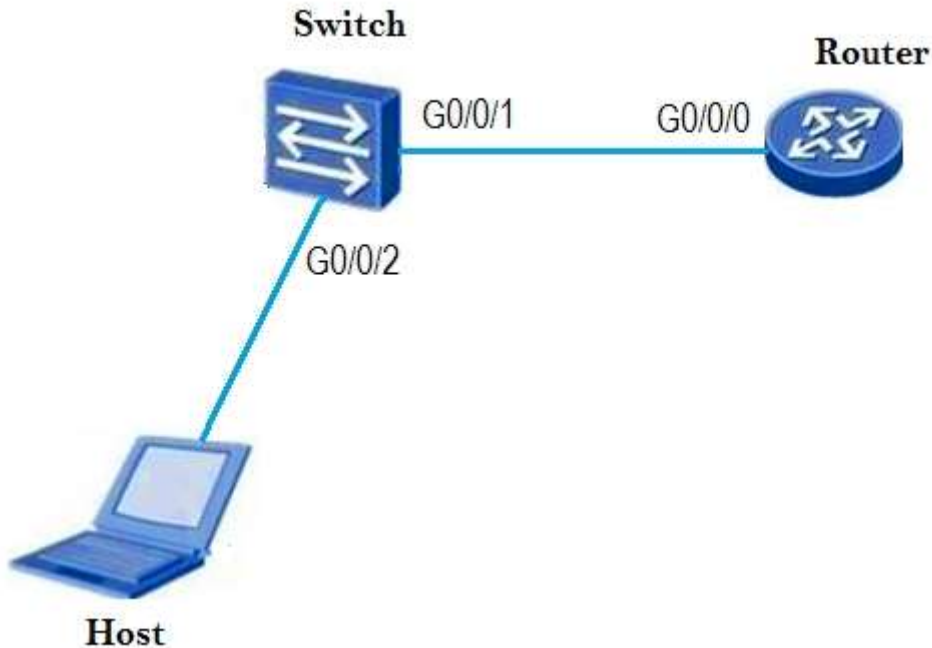
**Section:** (none)

**Explanation**

**Explanation/Reference:**

**QUESTION 68**

Refer to the graphic.



The host has a problem establishing a telnet connection with the router attached to interface G0/0/0. Which of the following steps can be used to help the administrator identify the problem? (Choose two)

- A. Check whether the host has configured the gateway IP address.
- B. Check whether the switch has configured the gateway IP address.
- C. Use the ping tool to check connectivity between host and router.
- D. Check the telnet server configuration is right on the router.

**Correct Answer:** CD

**Section:** (none)

**Explanation**

**Explanation/Reference:**

#### QUESTION 69

Which of the following methods are supported by VRP platform to configure the router? (Choose three)

- A. Through the Console port
- B. Through Telnet
- C. Through the AUX port
- D. Through FTP

**Correct Answer:** ABC

**Section:** (none)

**Explanation**

**Explanation/Reference:**

#### QUESTION 70

The administrator wishes to update the configuration file of an AR2200 router using a USB cable.

How can this be achieved? (Choose all that apply.)

- A. The administrator should connect the USB cable between the terminal and the mini USB port of the AR2200 router.
- B. The administrator should connect the USB cable between the terminal and the USB port of the AR2200 router.
- C. The AR2200 router cannot support configuration updates through a USB cable.
- D. The administrator should install the mini USB drivers on the terminal after connecting the USB.

**Correct Answer:** AD

**Section:** (none)

**Explanation**

**Explanation/Reference:**

### QUESTION 71

The administrator wishes to manage a network through telnet from a user's terminal to a router.

How can this be achieved?

- A. A connection should be established between the ethernet port of the terminal and the console port of the router.
- B. A connection should be established between the ethernet port of the terminal and the ethernet port of the router.
- C. A connection should be established between the console port of the terminal and the ethernet port of the router. use console cable connect pc's ethernet port and router's console port.
- D. A connection should be established between the COM port of the terminal and the console port of the router.

**Correct Answer:** B

**Section:** (none)

**Explanation**

**Explanation/Reference:**

### QUESTION 72

Whilst configuring a device, an administrator experiences trouble remembering certain commands.

Which of the following will help support the administrator? (Choose two)

- A. TAB
- B. question mark
- C. ctrl+b
- D. ctrl+c

**Correct Answer:** AB

**Section:** (none)

**Explanation**

**Explanation/Reference:**

### QUESTION 73

```
<Huawei> system-view
[Huawei] user-interface console 0
[Huawei-ui-console0] user privilege level 15
[Huawei-ui-console0] authentication-mode password
[Huawei-ui-console0] set authentication password cipher huawei2012
[Huawei-ui-console0] quit
```

Refer to the configuration output. The administrator configured the device using the commands in the configuration output. Regarding these commands, which statement is false?

- A. The administrator wishes to enable management through the console interface.
- B. Following configuration, the administrator cannot manage the device remotely.
- C. A user that logs-in through the console interface is assigned the highest privilege level.
- D. The password of a user logged in through console is 'cipher huawei2012'.

**Correct Answer:** D

**Section:** (none)

**Explanation**

**Explanation/Reference:**

#### QUESTION 74

Which of the following is abbreviation of VRP?

- A. Versatile Routine Platform
- B. Virtual Routing Platform
- C. Virtual Routing Plane
- D. Versatile Routing Platform

**Correct Answer:** D

**Section:** (none)

**Explanation**

**Explanation/Reference:**

#### QUESTION 75

Which of the following must be used to establish the configuration environment when a router is powered on for the first time?

- A. SSL
- B. SSH
- C. Console port
- D. Telnet

**Correct Answer:** C

**Section:** (none)

**Explanation**

**Explanation/Reference:**

#### QUESTION 76

Which of the following parameter settings for terminal emulation are correct when configuring a Huawei router through the Console port?

- A. 4800bps, 8 data bits, 1 stop bits, odd parity check, and no flow control
- B. 9600bps, 8 data bits, 1 stop bits, no parity check, and no flow control
- C. 9600bps, 8 data bits, 1 stop bits, even parity check, and hardware flow control
- D. 19200bps, 8 data bits, 1 stop bits, no parity check, and no flow control

**Correct Answer:** B

**Section:** (none)

**Explanation**

**Explanation/Reference:**

#### **QUESTION 77**

Which of the following commands is used to enter the system-view from the user view on a Huawei router?

- A. system-view
- B. enable
- C. configure terminal
- D. interface system

**Correct Answer:** A

**Section:** (none)

**Explanation**

**Explanation/Reference:**

#### **QUESTION 78**

On VRP platform, the command lines are classified into four levels in increasing priority: Visit level, Monitoring level, Configuration level, and Management level. At which level, the operator is permitted to configure service but is not permitted to operate the file system?

- A. Visit level
- B. Monitoring level
- C. Configuration level
- D. Management level

**Correct Answer:** C

**Section:** (none)

**Explanation**

**Explanation/Reference:**

#### **QUESTION 79**

On Huawei VRP platform, which of the following can be used to invoke the history command saved by the command line interface? (Choose two)

- A. Up cursor key < >
- B. Left cursor key < >
- C. Ctrl+P
- D. Ctrl+U

**Correct Answer:** AC  
**Section:** (none)  
**Explanation**

**Explanation/Reference:**

**QUESTION 80**

Which of the following commands can be used to view the current configurations on a Huawei router?

- A. display current-configuration
- B. display saved-configuration
- C. view saved-configuration
- D. show startup-configuration

**Correct Answer:** A  
**Section:** (none)  
**Explanation**

**Explanation/Reference:**

**QUESTION 81**

The administrator wishes to change name of the router. Under which view should the administrator be in order to achieve this?

- A. User-view
- B. System-view
- C. Interface-view
- D. Protocol-view

**Correct Answer:** B  
**Section:** (none)  
**Explanation**

**Explanation/Reference:**

**QUESTION 82**

```
<Huawei> system-view  
[Huawei]command-privilege level 3 view user save
```

Refer to the command output. What is the result of the shown command?

- A. The command adjusts the save command of a user to privilege level 3.
- B. The command adjusts the save command in the user view to privilege level 3.
- C. The command adjusts the user view command privilege level to 3, and saves the configuration.
- D. The command adjusts the privilege level of a user to 3, and saves the configuration.

**Correct Answer:** B  
**Section:** (none)  
**Explanation**

**Explanation/Reference:**

**QUESTION 83**

```
<Huawei>system-view  
[Huawei]history-command max-size 20
```

Refer to the command output. Which statements regarding the shown command are true? (Choose two)

- A. The command is used to adjust the size of the history command buffer.
- B. The default value of the history command buffer is 5.
- C. The command should be configured in the user-interface view.
- D. Once configured, commands totaling up to 20 bytes can be saved in the buffer.

**Correct Answer:** AC

**Section:** (none)

**Explanation**

**Explanation/Reference:**

**QUESTION 84**

An AR2200 router is required to be reconfigured from scratch. Which steps are needed to achieve this? (Choose all that apply.)

- A. Reset the saved configuration.
- B. Clear the current configuration.
- C. Reboot the AR2200.
- D. Assign the configuration file to be used at next startup.

**Correct Answer:** AC

**Section:** (none)

**Explanation**

**Explanation/Reference:**

**QUESTION 85**

An administrator has been requested to replace the configuration file of a router in the network. The administrator has been instructed that after logging into the router, he must first permanently erase the current configuration file config.zip from the system.

Which command should he use to achieve this?

- A. delete /force config.zip
- B. delete /unreserved config.zip
- C. reset config.zip
- D. clear config.zip

**Correct Answer:** B

**Section:** (none)

**Explanation**

**Explanation/Reference:**

**QUESTION 86**

Which of the following commands can switch a view from the system view to the user view?

- A. System-view
- B. Router
- C. Quit
- D. User-view

**Correct Answer:** C

**Section:** (none)

**Explanation**

**Explanation/Reference:**

#### **QUESTION 87**

Which of the following storage devices are supported by Huawei router? (Select four)

- A. SDRAM
- B. NVRAM
- C. Flash
- D. Hard Disk
- E. CF Card

**Correct Answer:** ABCE

**Section:** (none)

**Explanation**

**Explanation/Reference:**

#### **QUESTION 88**

Which of the following storage devices is used to store the startup configuration files in a router?

- A. SDRAM
- B. NVRAM
- C. Flash
- D. BootROM

**Correct Answer:** B

**Section:** (none)

**Explanation**

**Explanation/Reference:**

#### **QUESTION 89**

<Huawei>reset saved-configuration

Warning: The action will delete the saved configuration in the device.

The configuration will be erased to reconfigure. Continue? [Y/N]:

Refer to the configuration output. Which of the following statements are true? (Select two answers)

- A. A user should enter 'Y' when wishing to clear the saved configuration file.
- B. The saved-configuration file that the device starts with can be erased.
- C. The saved-configuration will be deleted after typing N
- D. The saved-configuration file will be replaced with the current-configuration.

**Correct Answer:** AB  
**Section:** (none)  
**Explanation**

**Explanation/Reference:**

#### QUESTION 90

When a router is powered on, the router reads the configuration file saved in the default save directory to get itself initialized. If the configuration file does not exist in the default save directory, what does the router use to initialize itself?

- A. New configuration file
- B. Initial configuration file
- C. Default parameters
- D. Current configuration file

**Correct Answer:** C  
**Section:** (none)  
**Explanation**

**Explanation/Reference:**

#### QUESTION 91

```
<Huawei>display startup
MainBoard:
Startup system software: sd1:/ar2220-v200r003c00spc200.cc
Next startup system software: sd1:/ar2220-v200r003c00spc200.cc
Backup system software for next startup: null
Startup saved-configuration file: null
Next startup saved-configuration file: null
Startup license file: null
Next startup license file: null
Startup patch package: null
Next startup patch package: null
Startup voice-files: null
Next startup voice-files: null
```

Refer to the display output. Which statement is false?

- A. The current configuration file has not been saved.
- B. The current startup system software is ar2220-v200r003c00spc200.cc
- C. The next startup system software cannot be changed.
- D. The next startup system software can be changed by using the "startup system software <startup-software-name>.cc" command.

**Correct Answer:** C  
**Section:** (none)  
**Explanation**

**Explanation/Reference:**

### QUESTION 92

<Huawei>

Warning: Auto-Config is working. Before configuring the device, stop Auto-Config. If you perform configurations when Auto-Config is running, the DHCP, routing, DNS, and VTY configurations will be lost. Do you want to stop Auto-Config? [y/n]:

When an administrator first initializes the router, a warning is displayed. Which statement regarding this warning is correct?

- A. If Auto-Config is required, the administrator should select 'y'.
- B. If Auto-Config is not required, the administrator should select 'n', for which subsequent configuration of the DHCP server, routing, DNS server and VTY user configuration is lost.
- C. When a device is started for the first time, the Auto-Config function is active.
- D. When a device is started for the first time, the Auto-Config function is inactive.

**Correct Answer: C**

**Section: (none)**

**Explanation**

**Explanation/Reference:**

### QUESTION 93

An AR2200 router in the company network cannot boot. In order to resolve this, the administrator wishes to update the VRP software.

What should he/she do?

- A. The administrator should use a console cable to connect the router and host, and directly upgrade the device.
- B. The administrator should use FTP to transfer the VRP software, by configuring the AR2200 router as an FTP client.
- C. The administrator should use DHCP to boot the AR2200, and then use the AR2200 router as a TFTP client to download the VRP software from the server.
- D. The administrator should use the telnet command on the client to remote access the device, and upgrade the VRP software.

**Correct Answer: B**

**Section: (none)**

**Explanation**

**Explanation/Reference:**

### QUESTION 94

<Huawei>

Warning: Auto-Config is working. Before configuring the device, stop Auto-Config. If you perform configurations when Auto-Config is running, the DHCP, routing, DNS, and VTY configurations will be lost. Do you want to stop Auto-Config? [y/n]:

Refer to the output. When the administrator first starts the router, a system notice is displayed, however after rebooting this router, the notice disappeared. What is the reason for this? (Choose all that apply.)

- A. This notice only appears during the very first device startup.

Jul 24, 2019

- B. The administrator has configured the device and saved the configuration, causing the notice to disappear.
- C. The administrator selected 'n' and did not save the configuration.
- D. The administrator selected 'y' and saved the configuration.

**Correct Answer:** BD

**Section:** (none)

**Explanation**

**Explanation/Reference:**

#### **QUESTION 95**

An end system is unable to communicate with a DHCP server following the startup process.

Which IP address may be used by the client?

- A. 0.0.0.0
- B. 127.0.0.1
- C. 169.254.2.33
- D. 255.255.255.255

**Correct Answer:** C

**Section:** (none)

**Explanation**

**Explanation/Reference:**

#### **QUESTION 96**

```
[Huawei]ip pool pool1
```

Info: It's successful to create an IP address pool.

```
[Huawei-ip-pool-pool1]network 10.10.10.0 mask 255.255.255.0
```

```
[Huawei-ip-pool-pool1]gateway-list 10.10.10.1
```

Refer to the configuration output. The administrator wishes to configure the DHCP server pool in order to assign an IP address to the customer's terminal device.

Which command should be included in the configuration to provide the minimal lease period for IP addresses?

- A. dhcp select relay
- B. lease day 1
- C. lease 24
- D. lease 0

**Correct Answer:** B

**Section:** (none)

**Explanation**

**Explanation/Reference:**

#### **QUESTION 97**

A DHCP server has been established in the enterprise network. After the client has obtained an IP address from the DHCP server, the user decided to modify the IP address manually.

In what way may this affect the enterprise network? (Choose two).

- A. The client may experience an IP address conflict.
- B. The client may access the network normally.
- C. The client's interface connection will shutdown.
- D. The client will associate with another DHCP server.

**Correct Answer:** AB

**Section:** (none)

**Explanation**

**Explanation/Reference:**

#### QUESTION 98

A DHCP server in the enterprise network is being used to allocated IP addresses to hosts. An administrator discovers however that some hosts are obtaining IP addresses outside of the scope of the DHCP server's address pool.

What are the possible reasons for this? (Choose three).

- A. Another DHCP server exists in the network and is allocating IP addresses to hosts that happen to be within a closer proximity than the authorized DHCP server.
- B. The hosts were unable to discover a DHCP server and therefore generated their own address in the 169.254.0.0 address range.
- C. The hosts were unable to discover a DHCP server and therefore generated their own address in the 127.254.0.0 address range.
- D. All addresses from the DHCP pool have been assigned.

**Correct Answer:** ABD

**Section:** (none)

**Explanation**

**Explanation/Reference:**

#### QUESTION 99

```
Router] ip pool pool1
[Router-ip-pool-pool1] network 10.10.10.0 mask 255.255.255.0
[Router-ip-pool-pool1] gateway-list 10.10.10.1
[Router-ip-pool-pool1] quit
[Router] ip pool pool2
[Router-ip-pool-pool2] network 10.20.20.0 mask 255.255.255.0
[Router-ip-pool-pool2] gateway-list 10.20.20.1
[Router-ip-pool-pool2] quit
[Router] interface GigabitEthernet 0/0/1
[Router-GigabitEthernet0/0/1] ip address 10.10.10.1 24
[Router-GigabitEthernet0/0/1] dhcp select global
```

Refer to the configuration output. Following configuration, a host is connected to the interface Gigabit Ethernet 0/0/1 of the router. Which IP address will the client obtain?

- A. An IP address from network 10.10.10.0/24 will be assigned.

- B. An IP address from network 10.20.20.0/24 will be assigned.
- C. The host will be unable to obtain an IP address.
- D. An IP address may be assigned from either 10.10.10.0/24 or 10.20.20.0/24.

**Correct Answer:** A

**Section:** (none)

**Explanation**

**Explanation/Reference:**

#### **QUESTION 100**

The IP addresses of clients in the network are deployed via a DHCP server. When a host reboots, which message will the host first send to the DHCP server?

- A. DHCP DISCOVER
- B. DHCP REQUEST
- C. DHCP OFFER
- D. DHCP ACK

**Correct Answer:** B

**Section:** (none)

**Explanation**

**Explanation/Reference:**

#### **QUESTION 101**

A DHCP Unique Identifier (DUID) in DHCPv6 can be configured in VRRP using which formats? (Choose two).

- A. DUID-LL
- B. DUID-LLT
- C. DUID-EN
- D. DUID-LLC

**Correct Answer:** AB

**Section:** (none)

**Explanation**

**Explanation/Reference:**

#### **QUESTION 102**

Which of the following statements about the information contained in a Database Description packet are true? (Choose three)

- A. A Database Description packet contains all information about each LSA.
- B. A Database Description packet contains only the header of an LSA.
- C. The header of an LSA is the unique identifier of the LSA.
- D. The header of an LSA is only a small portion of all the data of the LSA.

**Correct Answer:** BCD

**Section:** (none)

**Explanation**

**Explanation/Reference:**

**QUESTION 103**

What is the default authentication mode for the default\_admin domain?

- A. None
- B. Local
- C. Radius
- D. 802.1X

**Correct Answer: B**

**Section: (none)**

**Explanation**

**Explanation/Reference:**

**QUESTION 104**

How many domains can be configured on a Huawei router?

- A. 30
- B. 31
- C. 32
- D. 33

**Correct Answer: A**

**Section: (none)**

**Explanation**

**Explanation/Reference:**

**QUESTION 105**

An authenticator router has been configured with two domains named "Area1" and "Area2", following which a user is created with the username "huawei" and the password "hello" for authentication. Which domain does this user belongs to?

- A. Area1 domain
- B. Area2 domain
- C. default domain
- D. default\_admin domain

**Correct Answer: C**

**Section: (none)**

**Explanation**

**Explanation/Reference:**

**QUESTION 106**

In order to check if the interface serial 1/0/0 is working in either DCE or DTE mode, command ( ) is used.

- A. display mode serial 1/0/0
- B. display controller

- C. display interface serial 1/0/0
- D. display current-config

**Correct Answer:** C

**Section:** (none)

**Explanation**

**Explanation/Reference:**

#### **QUESTION 107**

How is mapping performed on a DTE device in a Frame Relay network?

- A. The local DLCI number is mapped to a remote IP address.
- B. The local IP address is mapped to a remote DLCI number.
- C. The local DLCI number is mapped to a local IP address.
- D. The remote DLCI number is mapped to a remote IP address.

**Correct Answer:** A

**Section:** (none)

**Explanation**

**Explanation/Reference:**

#### **QUESTION 108**

If Frame Relay implements dynamic address mapping for the PVC, which protocol will be used?

- A. LMI protocol
- B. ARP protocol
- C. RARP protocol
- D. InARP protocol

**Correct Answer:** D

**Section:** (none)

**Explanation**

**Explanation/Reference:**

#### **QUESTION 109**

Which command should be used to check the mapping between protocol addresses and frame relay addresses?

- A. display fr interface
- B. display fr map-info
- C. display fr inarp-info
- D. display interface brief

**Correct Answer:** B

**Section:** (none)

**Explanation**

**Explanation/Reference:**

**QUESTION 110**

Which of the following protocols is used in Frame Relay to map the address to DLCI dynamically?

- A. ARP protocol
- B. RARP protocol
- C. InARP protocol
- D. Map protocol

**Correct Answer:** C

**Section:** (none)

**Explanation**

**Explanation/Reference:**

**QUESTION 111**

Which of the following parameters must be specified when configuring static mapping for Frame Relay network? (Choose two)

- A. Local DLCI
- B. Remote DLCI
- C. Local network layer protocol address
- D. Remote network layer protocol address

**Correct Answer:** AD

**Section:** (none)

**Explanation**

**Explanation/Reference:**

**QUESTION 112**

Which of the following regarding Frame Relay DLCI are correct? (Choose three)

- A. DLCI is locally significant
- B. DLCI is allocated by DTE
- C. The range of DLCI value that can be used is from 16-1007
- D. The same DLCI can be configured on different physical interfaces

**Correct Answer:** ACD

**Section:** (none)

**Explanation**

**Explanation/Reference:**

**QUESTION 113**

Which of the following commands is used to enable dynamic address mapping protocol in the interface encapsulated with Frame Relay?

- A. fr inarp
- B. fr reverse-arp
- C. inverse-arp
- D. reverse-arp

**Correct Answer:** A  
**Section:** (none)  
**Explanation**

**Explanation/Reference:**

**QUESTION 114**

What is the meaning of 200 in the command "fr map ip 10.1.1.2 200"?

- A. remote logical channel ID
- B. local DLCI
- C. remote interface ID
- D. remote node ID

**Correct Answer:** B  
**Section:** (none)  
**Explanation**

**Explanation/Reference:**

**QUESTION 115**

Which of the following commands can be used to display mapping relationship between network address and DLCI?

- A. display fr interface
- B. display fr
- C. display fr map-info
- D. display fr brief

**Correct Answer:** C  
**Section:** (none)  
**Explanation**

**Explanation/Reference:**

**QUESTION 116**

Which of following may be the reasons that cause Frame Relay PVC to work abnormally? (Choose three)

- A. Same DLCI number is configured on the same router
- B. LMI type mismatch
- C. Frame Relay encapsulation type mismatch
- D. Incorrect configuration of the DLCI number

**Correct Answer:** BCD  
**Section:** (none)  
**Explanation**

**Explanation/Reference:**

**QUESTION 117**

An administrator wishes to update the VRP software of company's AR2200 router. How can this be achieved?

(Choose three)

- A. The administrator can use FTP to transfer the VRP software, with the AR2200 router as the FTP client.
- B. The administrator can use FTP to transfer the VRP software, with the AR2200 router as the FTP server.
- C. The administrator can use TFTP to transfer the VRP software, with the AR2200 router as the TFTP server.
- D. The administrator can use TFTP to transfer the VRP software, with the AR2200 router as the TFTP client.

**Correct Answer:** ABD

**Section:** (none)

**Explanation**

**Explanation/Reference:**

#### **QUESTION 118**

An administrator wishes to implement new features in the network, but the VRP version of one AR2200 router is out of date. The administrator needs to upgrade the VRP software.

Which of the following options regarding file transfer is false?

- A. The AR2200 router can function as a TFTP client to support the upgrade.
- B. The AR2200 router can function as the TFTP server to support the upgrade.
- C. The AR2200 router can function as the FTP server to support the upgrade.
- D. The AR2200 router can function as an FTP client to support the upgrade.

**Correct Answer:** B

**Section:** (none)

**Explanation**

**Explanation/Reference:**

#### **QUESTION 119**

FTP and TFTP can be used to update the system file on Huawei routers. Which of the following statements are correct? (Choose three)

- A. Huawei router can be configured as FTP Client
- B. Huawei router can be configured as FTP Server
- C. Huawei router can be configured as TFTP Client
- D. Huawei router can be configured as TFTP Server

**Correct Answer:** ABC

**Section:** (none)

**Explanation**

**Explanation/Reference:**

#### **QUESTION 120**

An administrator discovered he/she was unable to use TFTP to transfer files to the router.

Which of the following describes the likely reason for this?

- A. The TFTP service had been disabled on the router.
- B. TCP port 69 of the server had been blocked.

- C. UDP port 69 of the server had been blocked.
- D. The username and password had been modified.

**Correct Answer:** C

**Section:** (none)

**Explanation**

**Explanation/Reference:**

#### **QUESTION 121**

FTP may be used to upgrade a router's VRP image.

Which of the following transmission modes should be used to achieve this?

- A. binary mode
- B. ASCII mode
- C. byte mode
- D. letter mode

**Correct Answer:** A

**Section:** (none)

**Explanation**

**Explanation/Reference:**

#### **QUESTION 122**

A client failed to transfer a file to the FTP server, but found the IP connectivity was without problem. The client assumed that the problem was with the port configuration.

The blocking of which ports would likely cause this problem? (Choose two)

- A. 21
- B. 80
- C. 20
- D. 50649

**Correct Answer:** AC

**Section:** (none)

**Explanation**

**Explanation/Reference:**

#### **QUESTION 123**

When using VRP, which of the following commands is used to configure the data link layer encapsulation type of a serial interface as HDLC?

- A. encapsulation hdlc
- B. link-protocol hdlc
- C. hdlc enable
- D. link-protocol ppp

**Correct Answer:** B

**Section: (none)**

**Explanation**

**Explanation/Reference:**

**QUESTION 124**

If AH and ESP are both required to protect data streams between IPsec peers, how many Security Associations (SA) are required in total?

- A. 1
- B. 2
- C. 3
- D. 4

**Correct Answer: D**

**Section: (none)**

**Explanation**

**Explanation/Reference:**

**QUESTION 125**

Two routers establish an IPsec tunnel, which of the following does not need to be the same on both peering devices?

- A. Encapsulation mode
- B. Transform mode
- C. Proposal name
- D. authentication algorithm

**Correct Answer: C**

**Section: (none)**

**Explanation**

**Explanation/Reference:**

**QUESTION 126**

Which of the following formats represent an accurate condensing of the IPv6 address 2031:0000:720C:0000:09E0:839A:130B? (Choose two).

- A. 2031:0:720C:0:0:9E0:839A:130B
- B. 2031:0:720C:0:0:9E:839A:130B
- C. 2031::720C::9E0:839A:130B
- D. 2031:0:720C::9E0:839A:130B

**Correct Answer: AD**

**Section: (none)**

**Explanation**

**Explanation/Reference:**

**QUESTION 127**

Which of the following IPv6 addresses can be configured on a router's interface? (Choose two).

- A. fe80:13dc::1/64
- B. ff00:8a3c::9b/64
- C. ::1/128
- D. 2001:12e3:1b02::21/64

**Correct Answer:** AD

**Section:** (none)

**Explanation**

**Explanation/Reference:**

#### **QUESTION 128**

The IPv6 address architecture does not include which of the following address types?

- A. unicast
- B. multicast
- C. broadcast
- D. anycast

**Correct Answer:** C

**Section:** (none)

**Explanation**

**Explanation/Reference:**

#### **QUESTION 129**

Which of the following descriptions regarding IPv6 addresses are correct? (Choose two)

- A. IPv6 addresses are 64 bits in length.
- B. IPv6 addresses are 128 bits in length.
- C. IPv6 extension headers are processed in order.
- D. IPv6 extension headers are processed randomly.

**Correct Answer:** BC

**Section:** (none)

**Explanation**

**Explanation/Reference:**

#### **QUESTION 130**

Interface G0/0/1 on RTA contains a MAC address of 00e0-fc03-aa73 and is configured with the IPv6 address 2001::2E0:FCFF:FE03:AA73. Which method is most likely to have been used to configure the interface IPv6 address?

- A. DHCPv6
- B. Auto-link
- C. ARP
- D. EUI-64

**Correct Answer:** D

**Section:** (none)

## Explanation

### Explanation/Reference:

#### QUESTION 131

In a small network supporting IPv6, a network administrator wishes implement RIPng.

Which of the following commands should be used to enable this protocol?

- A. [RTA-GigabitEthernet0/0/0]ripng 1 enable
- B. [RTA]ripng 1 enable
- C. <RTA>ripng 1 enable
- D. [RTA-ripng-1]ripng 1 enable

**Correct Answer:** A

**Section:** (none)

## Explanation

### Explanation/Reference:

#### QUESTION 132

In a network supporting IPv6, OSPF no longer supports which feature?

- A. multiple areas
- B. Router-ID
- C. authentication
- D. multicast updates

**Correct Answer:** C

**Section:** (none)

## Explanation

### Explanation/Reference:

#### QUESTION 133

The network administrator has decided to configure link aggregation in the enterprise network.

Which of the following represent advantages of link aggregation? (Choose three)

- A. Load balancing.
- B. Improved bandwidth.
- C. Enhanced reliability.
- D. Improved security.

**Correct Answer:** ABC

**Section:** (none)

## Explanation

### Explanation/Reference:

#### QUESTION 134

In port aggregation, "multiple" ports are aggregated to form a port aggregation group so that all the member

ports in the group share the outgoing/incoming load.

At which layer is port aggregation implemented?

- A. Physical Layer
- B. Data Link Layer
- C. Network Layer
- D. Transport Layer

**Correct Answer:** B

**Section:** (none)

**Explanation**

**Explanation/Reference:**

#### **QUESTION 135**

What benefits does port aggregation yield? (Choose three)

- A. Improves link bandwidth
- B. Implements load sharing
- C. Improves network reliability
- D. Facilitates data copy for analysis

**Correct Answer:** ABC

**Section:** (none)

**Explanation**

**Explanation/Reference:**

#### **QUESTION 136**

What is the maximum number of member interfaces supported by a single Eth-Trunk?

- A. 6
- B. 8
- C. 10
- D. 12

**Correct Answer:** B

**Section:** (none)

**Explanation**

**Explanation/Reference:**

#### **QUESTION 137**

The Eth-Trunk frame forwarding mechanism used to prevent changes in the data sequence forwards frames based on which of the following parameters?

- A. The same source or destination IP address.
- B. The same source or destination MAC address.
- C. The same protocol type.
- D. The same source or destination port number.

**Correct Answer:** AB

**Section:** (none)

**Explanation**

**Explanation/Reference:**

**QUESTION 138**

In Layer 2 mode, the transmission rate of an Eth-Trunk interface is determined by which of the following?  
(Choose all that apply.)

- A. Maximum number of Up member links
- B. Minimum number of Up member links
- C. Number of Up member interfaces
- D. Number of interfaces.

**Correct Answer:** AC

**Section:** (none)

**Explanation**

**Explanation/Reference:**

**QUESTION 139**

The network administrator wishes to forward data over an Eth-trunk, however associated member interfaces operate at different rates. In terms of the resulting behavior, which of the following is true?

- A. The two switches will not be able to communicate.
- B. The higher rate member interfaces may incur packet loss.
- C. The Eth-Trunk will work normally.
- D. The lower rate member interfaces may incur packet loss.

**Correct Answer:** D

**Section:** (none)

**Explanation**

**Explanation/Reference:**

**QUESTION 140**

The network administrator attempts to add interface G0/0/1 on Switch A to Eth-trunk 1, however the command fails.

Which of the following may cause this?

- A. The interface is operating in half-duplex mode.
- B. The interface has been shutdown.
- C. The interface is already associated with another Eth-trunk.
- D. The interface is an access port.

**Correct Answer:** CD

**Section:** (none)

**Explanation**

**Explanation/Reference:**

### QUESTION 141

A network requires a solution to allow 50 private IP addresses to be translated, however only a single public address is available for use.

Which translation method can be used to support this requirement?

- A. Static NAT
- B. Dynamic NAT
- C. Easy-IP
- D. NAT

**Correct Answer:** C

**Section:** (none)

**Explanation**

**Explanation/Reference:**

### QUESTION 142

NAPT allows for multiple internal addresses to be mapped to a single public address.

How does NAT distinguish between the different private addresses when mapping to the same public address?

- A. The source MAC address is used.
- B. The destination MAC address is used.
- C. The source port number is used.
- D. The destination port number is used.

**Correct Answer:** C

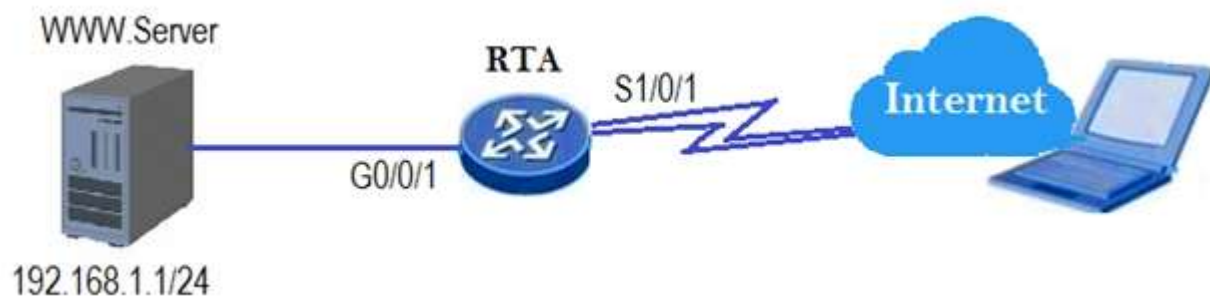
**Section:** (none)

**Explanation**

**Explanation/Reference:**

### QUESTION 143

A web server in a private network is required to provide HTTP services to public users. The network administrator is required to configure NAT on RTA.



Which configuration should be used?

- A. [RTA-Serial1/0/1]nat server protocol tcp global 202.10.10.1 www inside 192.168.1.1 8080
- B. [RTA-Serial0/0/1]nat server protocol tcp global 192.168.1.1 www inside 202.10.10.1 8080

- C. [RTA-GigabitEthernet0/0/1]nat server protocol tcp global 202.10.10.1 www inside 192.168.1.1 8080
- D. [RTA- GigabitEthernet0/0/1]nat server protocol tcp global 192.168.1.1 www inside 202.10.10.1 8080

**Correct Answer:** A

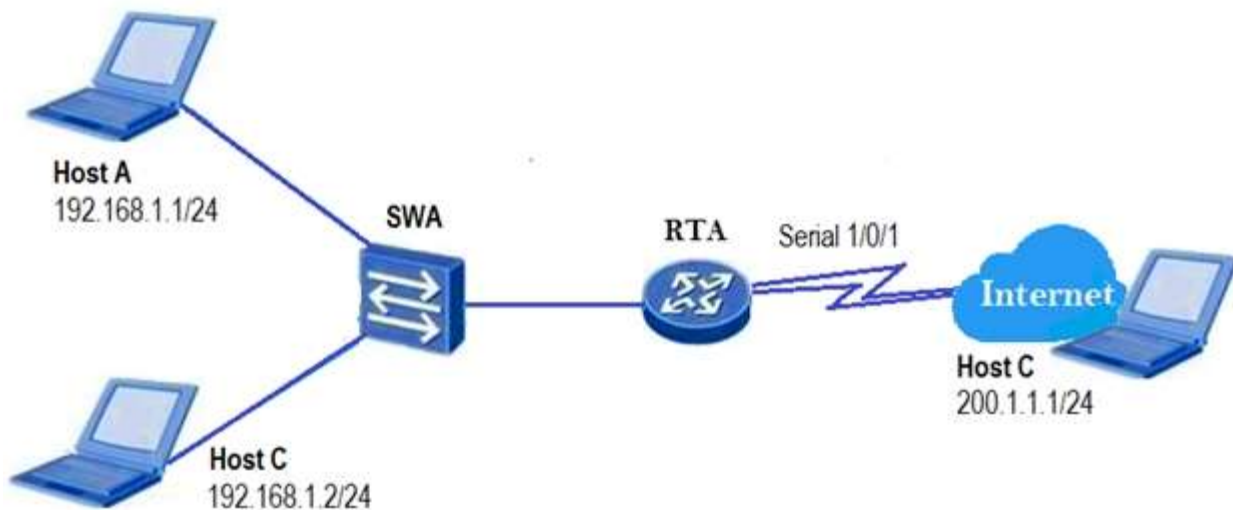
**Section:** (none)

**Explanation**

**Explanation/Reference:**

**QUESTION 144**

The network administrator needs to configure static NAT on RTA, in order to allow Host A to communicate with Host C.



Which command is correct?

- A. [RTA-Serial1/0/1]nat outbound 200.1.1.10
- B. [RTA-Serial1/0/1]nat static global 200.1.1.10 inside 192.168.1.0
- C. [RTA-Serial1/0/1]nat static global 192.168.1.1 inside 200.1.1.10
- D. [RTA-Serial1/0/1]nat static global 200.1.1.10 inside 192.168.1.1

**Correct Answer:** D

**Section:** (none)

**Explanation**

**Explanation/Reference:**

**QUESTION 145**

[RTA-GigabitEthernet0/0/0]nat outbound 2000 address-group 1

Refer to the configuration output. What does the value “2000” refer to?

- A. It represents the ACL number.
- B. It represents the NAT number.
- C. It represents the translated port number.
- D. It represents the number of bytes that can be translated before the address is returned to the public address pool.

**Correct Answer:** A  
**Section:** (none)  
**Explanation**

**Explanation/Reference:**

**QUESTION 146**

NAPT uses the same public address but different port numbers to translate private addresses.

Which statement regarding the port number is correct?

- A. It is necessary to configure port number mapping manually.
- B. It is only necessary to configure the port number range.
- C. It is not necessary to configure port numbers.
- D. An access control list is needed to assign port numbers.

**Correct Answer:** C  
**Section:** (none)  
**Explanation**

**Explanation/Reference:**

**QUESTION 147**

A configured internal host of a private network wishes to access the internet. What must be configured on the enterprise network egress router in order to achieve this? (Choose all that apply.)

- A. NAT Easy IP
- B. DHCP
- C. BGP
- D. Default route

**Correct Answer:** AD  
**Section:** (none)  
**Explanation**

**Explanation/Reference:**

**QUESTION 148**

Which of the following statements are correct about NAT? (Choose three)

- A. NAT is the abbreviation for "Network Address Translation".
- B. NAT is used for translation between private and public network addresses.
- C. When hosts inside a private network access the outside network, NAT is not required.
- D. NAT provides an effective way to solve the problem of insufficient IP addresses.

**Correct Answer:** ABD  
**Section:** (none)  
**Explanation**

**Explanation/Reference:**

**QUESTION 149**

Which of the following technologies can allow a host with IP address 10.0.0.1 to access the internet?

- A. Static route
- B. Dynamic route
- C. Route import
- D. NAT

**Correct Answer:** D

**Section:** (none)

**Explanation**

**Explanation/Reference:**

**QUESTION 150**

Which of the following items can be translated by NAT?

- A. MAC address + port number
- B. IP address + port number
- C. Only MAC address
- D. Only IP address

**Correct Answer:** B

**Section:** (none)

**Explanation**

**Explanation/Reference:**

**QUESTION 151**

Which of the following statements about a designated port working in RIPv2 multicast mode are true? (Choose three)

- A. The port receives only RIPv2 multicast packets.
- B. The port does not receive RIPv1 broadcast packets.
- C. The port does not receive RIPv2 broadcast packets.
- D. The port receives only RIPv1 multicast packets.

**Correct Answer:** ABC

**Section:** (none)

**Explanation**

**Explanation/Reference:**

**QUESTION 152**

Which of the following statements regarding the router ID in OSPF are incorrect? (Choose three)

- A. The router IDs of OSPF routers in the same area must be the same, but can be different in different areas.
- B. The router ID must be the IP address of an OSPF router interface.
- C. The router ID must be configured manually.
- D. A router running OSPF must have a router ID for it to operate properly.

**Correct Answer:** ABC

**Section: (none)**

**Explanation**

**Explanation/Reference:**

**QUESTION 153**

Which of the following statements regarding Designated Routers in OSPF are correct? (Choose three)

- A. DR is elected by all the routers in the same network segment.
- B. If the priorities of two routers are different, the router with the lower priority will be elected as DR.
- C. If the priorities of two routers are equal, the router with the higher Router ID will be elected as DR.
- D. DR and BDR must be adjacent.

**Correct Answer: ACD**

**Section: (none)**

**Explanation**

**Explanation/Reference:**

**QUESTION 154**

On the VRP platform, which of the following commands is used to configure the Router ID of a router as 1.1.1.1?

- A. <Huawei>router id 1.1.1.1
- B. [Huawei]router id 1.1.1.1
- C. [Huawei]router-id 1.1.1.1
- D. [Huawei]router id 1.1.1.1 255.255.255.255

**Correct Answer: B**

**Section: (none)**

**Explanation**

**Explanation/Reference:**

**QUESTION 155**

Which of the following OSPF versions is specific to IPv6?

- A. OSPFv1
- B. OSPFv2
- C. OSPFv3
- D. OSPFv4

**Correct Answer: C**

**Section: (none)**

**Explanation**

**Explanation/Reference:**

**QUESTION 156**

The administrator wishes to configure OSPF on a router in the network however the router has no loopback interface.

Which value will be used as the router ID?

- A. The lowest IP address of the router's active interfaces.
- B. The highest IP address of the router's active interfaces.
- C. The IP address of the management interface.
- D. The priority value of the router.

**Correct Answer:** B

**Section:** (none)

**Explanation**

**Explanation/Reference:**

#### **QUESTION 157**

An administrator of a company supporting a large enterprise network wishes to implement OSPF on the network as opposed to RIP. Which of the following points should the administrator use to support his reasoning for this change? (Choose three)

- A. OSPF has no hop count limitation.
- B. OSPF has a lower routing update overhead.
- C. OSPF has a simpler configuration.
- D. OSPF supports faster convergence.

**Correct Answer:** ABD

**Section:** (none)

**Explanation**

**Explanation/Reference:**

#### **QUESTION 158**

Which of the following statements regarding single area OSPF are correct? (Choose three)

- A. An IP address needs to be configured on a loopback interface of each router before configuring an OSPF area.
- B. The value of an area can be from 0.0.0.0 to 255.255.255.255.
- C. A single area can be configured using any supported area number.
- D. All of the links of the network need to be advertised in Area 0.

**Correct Answer:** BCD

**Section:** (none)

**Explanation**

**Explanation/Reference:**

#### **QUESTION 159**

10.0.1.0/24 O\_ASE 150 2 D 10.0.23.3 Serial2/0/0

Refer to the display output. Which of the following statements regarding route shown are true? (Choose two)

- A. The address 10.0.23.3 has been configured on the peer's serial 2/0/0 interface.
- B. The route preference has been changed by the administrator.
- C. The metric for the route 10.0.1.0 indicates that two hops are needed.

D. The route has been learned via the OSPF protocol.

**Correct Answer:** AD

**Section:** (none)

**Explanation**

**Explanation/Reference:**

#### **QUESTION 160**

Which of the following statements regarding link-state database and routing-table of a "single" OSPF area are correct? (Choose two)

- A. The link-state databases that all routers build are identical.
- B. The link-state databases that all routers build are different.
- C. The routing-tables that all routers calculate are different.
- D. The routing-tables that all routers calculate are identical.

**Correct Answer:** AC

**Section:** (none)

**Explanation**

**Explanation/Reference:**

#### **QUESTION 161**

Which of the following steps are necessary to configure OSPF on a Huawei router? (Choose three)

- A. Configuration of a router ID
- B. Enabling of an OSPF process
- C. Specifying an OSPF area
- D. Configuration of the network segments within each area

**Correct Answer:** BCD

**Section:** (none)

**Explanation**

**Explanation/Reference:**

#### **QUESTION 162**

Which of the following statements regarding the DR in an OSPF network are correct? (Choose two)

- A. There must be at least one DR in an OSPF area.
- B. A DR must be elected among the routers through the negotiations that are defined by OSPF protocol.
- C. Only the router with highest priority will be elected as DR.
- D. Only NBMA or Broadcast networks need to elect DR.

**Correct Answer:** BD

**Section:** (none)

**Explanation**

**Explanation/Reference:**

#### **QUESTION 163**

Jul 24, 2019

Which of the following VRP commands can be used to enter area 0 view? (Choose two)

- A. [Huawei]ospf area 0
- B. [Huawei-ospf-1]area 0
- C. [Huawei-ospf-1]area 0.0.0.0
- D. [Huawei-ospf-1]area 0 enable

**Correct Answer:** BC

**Section:** (none)

**Explanation**

**Explanation/Reference:**

#### **QUESTION 164**

Which of the following commands is used to display the OSPF neighbor relationship establishment?

- A. display ospf neighbor
- B. display ospf brief
- C. display ospf peer
- D. display ospf interface

**Correct Answer:** C

**Section:** (none)

**Explanation**

**Explanation/Reference:**

#### **QUESTION 165**

With what kind of routers does a DRother router exchange link state information and route information?  
(Choose two)

- A. DR
- B. BDR
- C. DRother
- D. All OSPF neighbors

**Correct Answer:** AB

**Section:** (none)

**Explanation**

**Explanation/Reference:**

#### **QUESTION 166**

An OSPF area is a collection of a group of routers and networks. OSPF defines that routers that have the same ( ) belong to the same OSPF area.

- A. neighbors
- B. LSDB
- C. LSA
- D. adjacency

**Correct Answer:** B

**Section: (none)**

**Explanation**

**Explanation/Reference:**

**QUESTION 167**

Which of the following statements about router IDs are true? (Choose two)

- A. The routers contained in the same LSDB have the same router ID.
- B. Each router in an OSPF network must have a unique router ID.
- C. Two routers in different OSPF areas can have the same router ID.
- D. A router ID is expressed in a 32-bit dotted decimal format.

**Correct Answer: BD**

**Section: (none)**

**Explanation**

**Explanation/Reference:**

**QUESTION 168**

OSPF allows for "multiple" processes. By default, OSPF selects a process whose number is ( ).

- A. 0
- B. 1
- C. 10
- D. 100

**Correct Answer: B**

**Section: (none)**

**Explanation**

**Explanation/Reference:**

**QUESTION 169**

In a network supporting IPv6, OSPF no longer supports which feature?

- A. multiple areas
- B. Router-ID
- C. authentication
- D. multicast updates

**Correct Answer: C**

**Section: (none)**

**Explanation**

**Explanation/Reference:**

**QUESTION 170**

Two routers are configured with OSPFv3. OSPFv3 is enabled on all interfaces of each router.

Which of the following is true in the event that the network administrator does not configure a Router-ID?

- A. The IP address of the loopback 0 interface will be used as the router ID.
- B. The IP address of the loopback 1 interface will be used as the router ID.
- C. The IP address of interface G0/0/0 will be used as the router ID.
- D. No router ID will be assigned to the router.

**Correct Answer:** D

**Section:** (none)

**Explanation**

**Explanation/Reference:**

#### QUESTION 171

Destination/Mask protocol pre Cost Nexthop Interface

```
9.0.0.0/8 OSPF 10 50 1.1.1.1 Serial 1/0/0
9.1.0.0/16 RIP 100 5 2.2.2.2 Ethernet 0/0/1
```

Refer to the graphic. Which of the following statements is correct when this router forwards the packet to the destination host 9.1.4.5?

- A. The router selects the first entry to match the destination address of the packet because the preference of OSPF is higher than the preference of RIP.
- B. The router selects the second entry to match the destination address of the packet because the cost of RIP is lower than that of OSPF.
- C. The router selects the second entry to match the destination address of the packet because the outgoing interface is an Ethernet interface. The forwarding speed of an Ethernet interface is faster than the forwarding speed of a serial interface
- D. The router selects the second entry to match the destination address of the packet because the router will match the most specific address.

**Correct Answer:** D

**Section:** (none)

**Explanation**

**Explanation/Reference:**

#### QUESTION 172

According to the default value of route preference on the VRP platform, which of the following represent the correct sequence for direct route, static route, RIP and OSPF if they are listed from high preference to low preference?

- A. Direct, Static, RIP, OSPF
- B. Direct, OSPF, Static, RIP
- C. Direct, OSPF, RIP, Static
- D. Direct, RIP, Static, OSPF

**Correct Answer:** B

**Section:** (none)

**Explanation**

**Explanation/Reference:**

**QUESTION 173**

A router has learned two routes for the same network with the same prefix. One route has been learned via OSPF with a metric of 4882, while the other route has been learned via RIPv2 with a metric of 4.

Which route (s) will be found in the routing table?

- A. The RIPv2 route.
- B. The OSPF and RIPv2 routes.
- C. The OSPF route.
- D. Neither of these routes will be found in the routing table.

**Correct Answer:** C

**Section:** (none)

**Explanation**

**Explanation/Reference:**

**QUESTION 174**

Assume that the router has learnt the best route to the same destination by using RIP, OSPF and Static Route respectively. By default, the Huawei router will select the route learnt via ( ) as the best route.

- A. RIP
- B. OSPF
- C. RIPv2
- D. Static route

**Correct Answer:** B

**Section:** (none)

**Explanation**

**Explanation/Reference:**

**QUESTION 175**

After checking the OSPF neighbor state, the administrator discovers that the router has established a TWOWAY state with the peering router.

What can be understood from this information? (Choose two)

- A. The routers are configured using the same process ID
- B. The routers are configured using the same area ID
- C. The routers are configured using wrong router ID
- D. The routers are considered DROthers in a broadcast network

**Correct Answer:** D

**Section:** (none)

**Explanation**

**Explanation/Reference:**

**QUESTION 176**

What functions does a Hello packet of OSPF implement? (Choose two)

- A. Neighbor discovery
- B. Deletion of unreachable neighbors
- C. Maintaining of neighbor relationships
- D. Negotiation of parameters among adjacent ports

**Correct Answer:** AC

**Section:** (none)

**Explanation**

**Explanation/Reference:**

#### **QUESTION 177**

Two routers are connected through serial interfaces and support PPP encapsulation.

Which parameters must be negotiated to establish the PPP connection? (Choose three).

- A. MRU
- B. Authentication password
- C. Magic-Number
- D. IP address

**Correct Answer:** ACD

**Section:** (none)

**Explanation**

**Explanation/Reference:**

#### **QUESTION 178**

What are the three protocol components defined by PPP? (Choose three).

- A. Data encapsulation.
- B. LCP
- C. NCP
- D. IPCP

**Correct Answer:** ABC

**Section:** (none)

**Explanation**

**Explanation/Reference:**

#### **QUESTION 179**

Two routers are connected via serial interfaces, for which the link-protocol is PPP. The network administrator wishes to configure PPP authentication to improve security on this link.

Which PPP authentication method provides a more secure solution?

- A. CHAP
- B. PAP
- C. MD5
- D. SSH

**Correct Answer:** A

**Section:** (none)

**Explanation**

**Explanation/Reference:**

**QUESTION 180**

If PPP authentication fails, which type of packet will be sent to the authenticated peer by the authenticator?

- A. Authenticate-Ack
- B. Authenticate-Nak
- C. Authenticate-Reject
- D. Authenticate-Reply

**Correct Answer:** B

**Section:** (none)

**Explanation**

**Explanation/Reference:**

**QUESTION 181**

Two routers are connected via serial interfaces and the link-protocol is PPP, but the MRU of two serial interfaces are different, in PPP LCP negotiated stage, what will happen?

- A. LCP negotiation will fail
- B. Negotiation will use the smaller value
- C. Negotiation will use the larger value
- D. Negotiation will use 1500

**Correct Answer:** B

**Section:** (none)

**Explanation**

**Explanation/Reference:**

**QUESTION 182**

PPP is more secure than HDLC because PPP supports authentication protocols such as ( ). (Choose two)

- A. PAP
- B. MD5
- C. CHAP
- D. SSH

**Correct Answer:** AC

**Section:** (none)

**Explanation**

**Explanation/Reference:**

**QUESTION 183**

When both ends running PPP protocol detect that the physical link is active, the link state will transit from dead to establish.

Which of the following protocols is used to negotiate the link parameters during this phase?

- A. IP
- B. DHCP
- C. LCP
- D. NCP

**Correct Answer:** C

**Section:** (none)

**Explanation**

**Explanation/Reference:**

#### **QUESTION 184**

A serial interface of a Huawei router currently using HDLC needs to assign PPP as the encapsulation protocol.

Which of the following commands is required to be configured at the serial interface view?

- A. link-protocol ppp
- B. encapsulation ppp
- C. enable ppp
- D. address ppp

**Correct Answer:** A

**Section:** (none)

**Explanation**

**Explanation/Reference:**

#### **QUESTION 185**

When using VRRP, which of the following commands is used to configure the PPP authentication method as PAP?

- A. ppp pap
- B. ppp authentication-pap
- C. ppp authentication-mode pap
- D. ppp pap-authentication

**Correct Answer:** C

**Section:** (none)

**Explanation**

**Explanation/Reference:**

#### **QUESTION 186**

When configuring the PPP authentication method as PAP, which of the following operations are necessary? (Choose three)

- A. Add the user name and password of the authenticated party to the local user list.
- B. Configure the encapsulation type of the interface connected to the peer as PPP.
- C. Configure PPP authentication method as CHAP.

D. On the authenticated party end, configure the user name and password that are sent to authenticator.

**Correct Answer:** ABD

**Section:** (none)

**Explanation**

**Explanation/Reference:**

**QUESTION 187**

In the PPP protocol, which of the following encryption algorithms is used by CHAP?

- A. DES
- B. MD5
- C. AES
- D. None

**Correct Answer:** B

**Section:** (none)

**Explanation**

**Explanation/Reference:**

**QUESTION 188**

What is the function of the "ip address ppp-negotiate" command?

- A. Enables the function of requesting for an IP address from the peer device.
- B. Enables the function of accepting the request for an IP address from the remote device.
- C. Enables the function of statically allocating IP addresses to the peer.
- D. None of the above.

**Correct Answer:** A

**Section:** (none)

**Explanation**

**Explanation/Reference:**

**QUESTION 189**

Two routers have established a point-to-point network using PPP. The administrator has configured the routers to run OSPF in the same area with the same router ID, what will behavior will occur as a result of the configuration?

- A. The routers will build a neighbor relationship even though both routers are using the same router ID.
- B. VRRP will notify of a router ID conflict between the two routers.
- C. The routers will build an adjacency even though both routers are using the same router ID.
- D. The routers will not send hello packets to each other because they are using the same router ID.

**Correct Answer:** B

**Section:** (none)

**Explanation**

**Explanation/Reference:**

**QUESTION 190**

The PPPoE session establishment process can be divided into which stages? (Choose all that apply.)

- A. Discovery stage
- B. DHCP stage
- C. PPPoE Session stage
- D. PPP connecting stage.

**Correct Answer:** AC

**Section:** (none)

**Explanation**

**Explanation/Reference:**

**QUESTION 191**

To establish multiple PPP point-to-point connections in the Ethernet network, a PPPoE server establishes connections with multiple PPPoE clients on one Ethernet port.

How does PPPoE differentiate between each connection?

- A. MAC address.
- B. IP address and MAC address
- C. MAC address and ppp-id
- D. MAC address and session-id

**Correct Answer:** D

**Section:** (none)

**Explanation**

**Explanation/Reference:**

**QUESTION 192**

When configuring a router as a PPPoE client, which configuration is not necessary?

- A. Configuration of the dialer-rule
- B. Configuration of the dialer interface
- C. Configuration of an IP address on the dialer interface
- D. Configuration of a password on the dialer interface

**Correct Answer:** C

**Section:** (none)

**Explanation**

**Explanation/Reference:**

**QUESTION 193**

In the PPPoE discovery stage, the PPPoE server assigns a session-id to the PPPoE client in which packet?

- A. PADI
- B. PADO
- C. PADR
- D. PADS

**Correct Answer:** D  
**Section:** (none)  
**Explanation**

**Explanation/Reference:**

**QUESTION 194**

Which command can be used to check the PPPoE client session status?

- A. display ip interface brief
- B. display current-configuration
- C. display pppoe-client session packet
- D. display pppoe-client session summary

**Correct Answer:** D  
**Section:** (none)  
**Explanation**

**Explanation/Reference:**

**QUESTION 195**

[Huawei]rip 1  
[Huawei-rip-1]version 2

Refer to the command output. An administrator wishes to configure RIP. Which other command needs to be configured for RIP routes to be advertised?

- A. import-route GigabitEthernet 0/0/1
- B. network 192.168.1.0 0.0.0.255
- C. network GigabitEthernet 0/0/1
- D. network 192.168.1.0

**Correct Answer:** D  
**Section:** (none)  
**Explanation**

**Explanation/Reference:**

**QUESTION 196**

A RIP router receives the routing update information from its neighbor.

Which of the following statements regarding routing update are correct? (Choose three)

- A. The received route that is not in the routing table will be added only when its hop count value is less than 16.
- B. The received route that already exists in the routing table will be updated only when the next hop is the router's neighbor and the cost value is smaller.
- C. The received route that already exists in the routing table will be updated only when the next hop is not the router's neighbor and the cost value is smaller.
- D. The received route that already exists in the routing table will be updated only when the next hop is the router's neighbor and the cost value has been changed.

**Correct Answer:** ACD

**Section: (none)**

**Explanation**

**Explanation/Reference:**

**QUESTION 197**

Which of the following commands is used to display the current running state and configuration of RIP?

- A. display protocol rip
- B. show rip
- C. display rip
- D. display this rip

**Correct Answer: C**

**Section: (none)**

**Explanation**

**Explanation/Reference:**

**QUESTION 198**

A user can view the information for the RIP protocol on a router. What does "Age time" in the returned result of the command mean?

- A. The interval of updating an RIP packet
- B. The aging time of an RIP route
- C. The suppression time of an RIP route
- D. The time spent on switching between RIP routes

**Correct Answer: B**

**Section: (none)**

**Explanation**

**Explanation/Reference:**

**QUESTION 199**

After a command for displaying RIP route information is entered on a router, peer 192.168.1.2 on Serial1/0/0 is displayed in the returned result.

What does 192.168.1.2 stand for?

- A. Address of a RIP neighbor
- B. Address of the port with the RIP protocol enabled
- C. Next hop address of the RIP route
- D. Transmission address of the RIP protocol

**Correct Answer: A**

**Section: (none)**

**Explanation**

**Explanation/Reference:**

**QUESTION 200**

<R2>debugging rip 1

Sep 13 2013 11:07:20.974.1-05:13 R2 RIP/7/DBG: 6: 13414: RIP 1: Receiving v1 response on GigabitEthernet0/0/0 from 10.0.12.1 with 1 RTE

Sep 13 2013 11:07:20.974.2-05:13 R2 RIP/7/DBG: 6: 13465: RIP 1: Receive response from 10.0.12.1 on GigabitEthernet0/0/0

Sep 13 2013 11:07:20.974.3-05:13 R2 RIP/7/DBG: 6: 13476: Packet: Version 1, Cmd response, Length 24

Sep 13 2013 11:07:20.974.4-05:13 R2 RIP/7/DBG: 6: 13527: Dest 1.0.0.0, Cost 1

Sep 13 2013 11:07:20.974.5-05:13 R2 RIP/7/DBG: 6: 2688: RIP 1: Ignoring packet. This version is not configured.

Refer to the debug output. Following configuration of R2, the administrator discovers that the behavior is not as expected and performs debugging. Based on the output from the debug, what is the source of the problem?

- A. R2 has configured an ACL to block the route to network 1.0.0.0
- B. R2 has enabled split horizon.
- C. R1 is using authentication, however R2 is not.
- D. R2 is operating using RIPv2, while R1 is using RIPv1.

**Correct Answer:** D

**Section:** (none)

**Explanation**

**Explanation/Reference:**

#### QUESTION 201

Which of the following statements about a designated port working in RIPv2 multicast mode are true? (Choose three)

- A. The port receives only RIPv2 multicast packets.
- B. The port does not receive RIPv1 broadcast packets.
- C. The port does not receive RIPv2 broadcast packets.
- D. The port receives only RIPv1 multicast packets.

**Correct Answer:** ABC

**Section:** (none)

**Explanation**

**Explanation/Reference:**

#### QUESTION 202

When a network administrator configures STP in the network, BPDU begin to be sent by switch. Which of the following statements regarding the BPDU frame are correct?

- A. A BPDU uses the IEEE 802.3 standard frame type
- B. A BPDU uses the Ethernet II standard frame type
- C. The BPDU frame's control field is 3
- D. The destination MAC address field of a BPDU frame is a broadcast address

**Correct Answer:** A

**Section: (none)**  
**Explanation**

**Explanation/Reference:**

**QUESTION 203**

In the case of Huawei router, the Tracert command uses UDP to encapsulate probe packets.

- A. True
- B. False

**Correct Answer: A**  
**Section: (none)**  
**Explanation**

**Explanation/Reference:**

**QUESTION 204**

The broadcast address of the subnet 192.168.1.0/25 is 192.168.1.128.

- A. True
- B. False

**Correct Answer: B**  
**Section: (none)**  
**Explanation**

**Explanation/Reference:**

**QUESTION 205**

A network administrator wishes to assign an IP address to a router interface G0/0/0. Which of the following IP addresses can be assigned?

- A. 192.168.10.112/30
- B. 237.6.1.2/24
- C. 145.4.2.55/26
- D. 127.3.1.4/28

**Correct Answer: C**  
**Section: (none)**  
**Explanation**

**Explanation/Reference:**

**QUESTION 206**

If a network's address is 192.168.1.0, the broadcast address of the network is 192.168.1.255.

- A. True
- B. False

**Correct Answer: A**  
**Section: (none)**

## Explanation

### Explanation/Reference:

#### QUESTION 207

In the VRP system, what are the functions of Ctrl+Z?

- A. Return from the system view to the user view
- B. Exit from the current view
- C. Exit from the interface view
- D. Exit from the console interface view
- E. Return to the user view

**Correct Answer:** A

**Section:** (none)

## Explanation

### Explanation/Reference:

#### QUESTION 208

In standard STP mode, which of the following ports on non-root switches forward the BPDUs with TC bits set generated by the root switch?

- A. Root port
- B. Backup port
- C. Designated port
- D. Alternate port

**Correct Answer:** A

**Section:** (none)

## Explanation

### Explanation/Reference:

#### QUESTION 209

Assuming all STP enabled switches have the same bridge priority. The MAC address of switch A is 00-e0-fc-00-00-40, the MAC address of switch B is 00-e0-fc-00-00-10, the MAC address of switch C is 00-e0-fc-00-00-20, and the MAC address of switch D is 00-e0-fc-00-00-80.

Which switch will be elected as the root switch?

- A. Switch A
- B. Switch B
- C. Switch C
- D. Switch D

**Correct Answer:** B

**Section:** (none)

## Explanation

### Explanation/Reference:

#### QUESTION 210

As specified by the RSTP protocol, when a root port fails, which type of port will function as a new root port and enters the forwarding state without any delay?

- A. Forwarding Port
- B. Alternate Port
- C. Backup Port
- D. Edge Port

**Correct Answer:** B

**Section:** (none)

**Explanation**

**Explanation/Reference:**

**QUESTION 211**

In STP, the priority of the STP root switch ranges from 0 to 65536.

- A. True
- B. False

**Correct Answer:** A

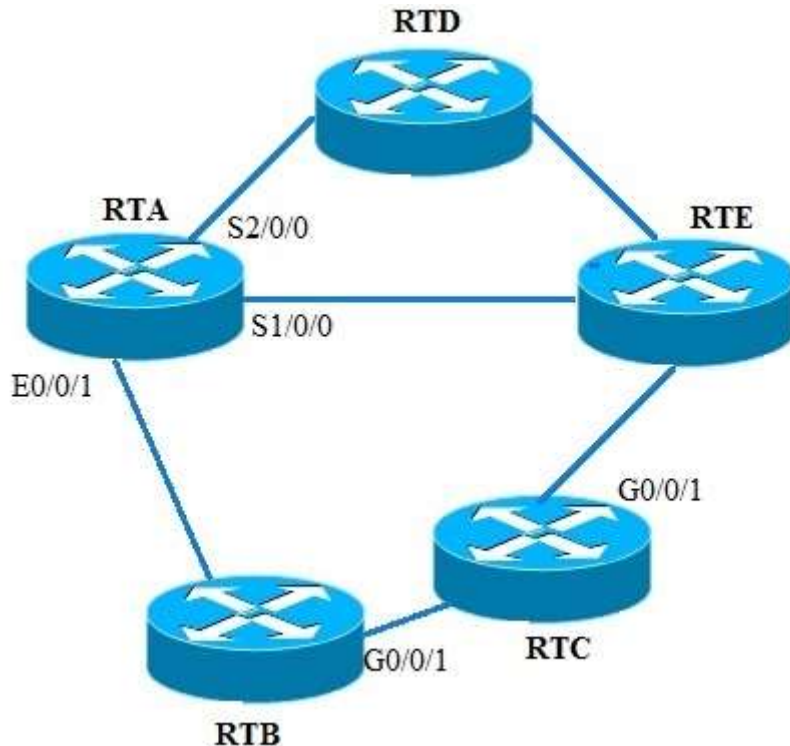
**Section:** (none)

**Explanation**

**Explanation/Reference:**

**QUESTION 212**

Refer to the graphic. Which statements correctly explain the forwarding behavior between RTA and RTE? (Choose all that apply)



- A. When the network uses OSPF, data will be forwarded along the path via S1/0/0
- B. When the network uses RIPv2, data will be forwarded along the path via S1/0/0
- C. When the network uses OSPF, data will be forwarded along the path from via E0/0/1
- D. When the network uses RIPv2, data will be forwarded along the path via S2/0/0

**Correct Answer:** BC

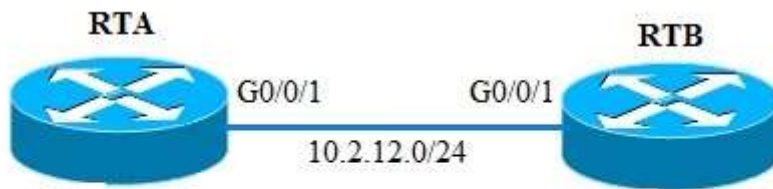
**Section:** (none)

**Explanation**

**Explanation/Reference:**

**QUESTION 213**

Refer to the graphic. RTA and RTB are running RIPv1. RTA has advertised 10.0.0.0 and 192.168.1.0 to the RIP network. Which routes will exist in the IP routing table of RTB? (Choose all that apply)



loopback0 : 10.1.12.1/32  
 loopback1 : 192.168.1.1/32

- A. 10.0.0.0/8
- B. 192.168.1.1/32
- C. 10.1.12.1/32
- D. 192.168.1.0/24

**Correct Answer:** AD

**Section:** (none)

**Explanation**

**Explanation/Reference:**

**QUESTION 214**

Which of the following configurations regarding static route are correct? (Choose all that apply)

- A. ip route-static 129.1.0.0 16 serial 0
- B. ip route-static 10.0.0.2 16 129.1.0.0
- C. ip route-static 129.1.0.0 16 10.0.0.2
- D. ip route-static 129.1.0.0.255.255.0.0 10.0.0.2

**Correct Answer:** ACD

**Section:** (none)

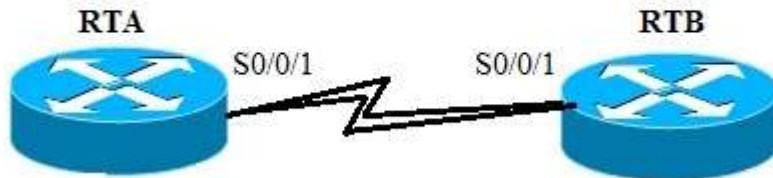
**Explanation**

**Explanation/Reference:**

**QUESTION 215**

Refer to the graphic. An administrator has configured RIPv2 in the two routers. What will happen after configuring the following commands: (Choose all that apply)

```
[RTA-Serial0/0/1] rip output  
[RTA-rip-1]silent-interface s0/0/1
```



- A. RTA will have the route learned from the RTB
- B. RTB will have the route learned from the RTA
- C. RTA will have no neighbor relationship with RTB
- D. RTB will have no neighbor relationship with RTA

**Correct Answer:** AD

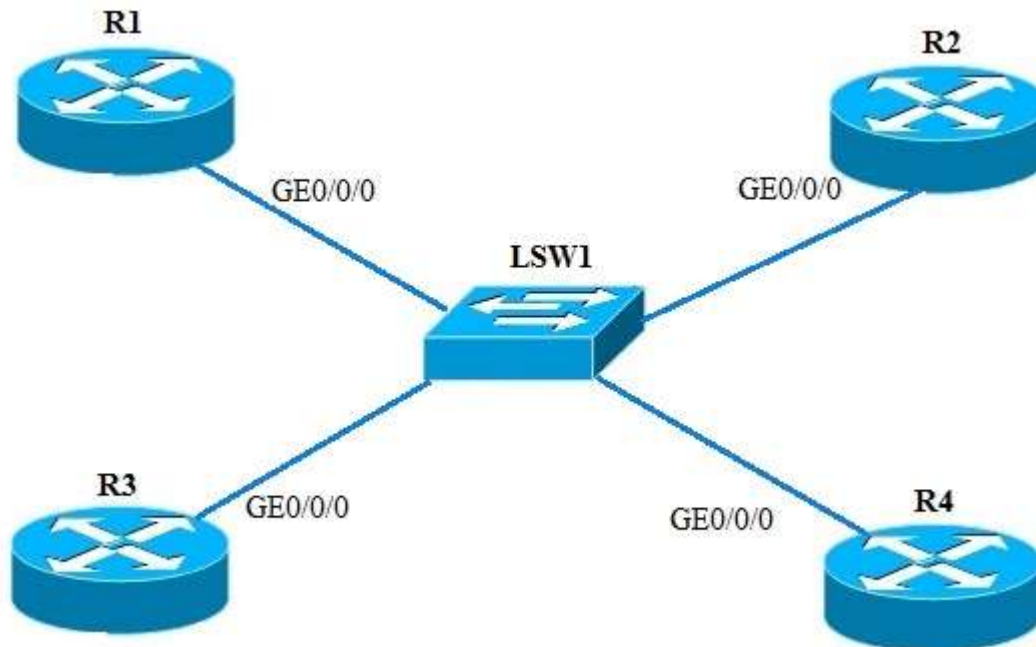
**Section:** (none)

**Explanation**

**Explanation/Reference:**

**QUESTION 216**

Refer to the graphic. OSPF is used on four routers that are in the same area and on the same network segment. In this scenario, OSPF selects one DR and multiple BDRs to ensure backup.



- A. True
- B. False

**Correct Answer:** B

**Section:** (none)

**Explanation**

**Explanation/Reference:**

#### **QUESTION 217**

On Huawei devices, you can use the undo summary command to prohibit automatic route summarization of RIPv2.

- A. True
- B. False

**Correct Answer:** A

**Section:** (none)

**Explanation**

**Explanation/Reference:**

#### **QUESTION 218**

Which of the following configurations regarding default route configuration is correct?

- A. [Quidway] ip route-static 0.0.0.0 0.0.0.0 172.16.2.1
- B. [Quidway] ip route-static 0.0.0.0 255.255.255.255 172.16.2.1
- C. [Quidway-GigabitEthernet0/0/1] ip route-static 0.0.0.0 0.0.0.0 172.16.2.1
- D. [Quidway] ip route static 0.0.0.0 0.0.0.0 172.16.2.1

**Correct Answer:** A

**Section:** (none)

**Explanation**

**Explanation/Reference:**

#### **QUESTION 219**

Which of the following WLAN standards support operation in the 5GHz range? (Choose all that apply)

- A. 802.11a
- B. 802.11b
- C. 802.11g
- D. 802.11n

**Correct Answer:** AD

**Section:** (none)

**Explanation**

**Explanation/Reference:**

#### **QUESTION 220**

On Huawei switches, you can run the vlan batch command to create multiple VLANs in batches.

- A. True
- B. False

**Correct Answer:** A  
**Section:** (none)  
**Explanation**

**Explanation/Reference:**

**QUESTION 221**

According to the topology and configuration of interconnected interfaces of switches shown in the figure, the data frame tagged with VLAN 10 can be forwarded correctly between the two switches.



```
[LSW1]interface GigabitEthernet0/0/1
[LSW1-GigabitEthernet0/0/1]Port link-type trunk
[LSW1-GigabitEthernet0/0/1]Port trunk pvid vlan 20
[LSW1-GigabitEthernet0/0/1]Port trunk allow-pass vlan 10
#
[LSW2]interface GigabitEthernet0/0/1
[LSW2-GigabitEthernet0/0/1]Port link-type trunk
[LSW2-GigabitEthernet0/0/1]Port trunk pvid vlan 20
[LSW2-GigabitEthernet0/0/1]Port trunk allow-pass vlan 10
```

- A. True
- B. False

**Correct Answer:** A  
**Section:** (none)  
**Explanation**

**Explanation/Reference:**

**QUESTION 222**

The network administrator creates VLAN 10 and assigns an IP address to VLANIF10. When using the command “display ip interface brief”, the administrator finds that VLANIF10 is down. What should be done to enable VLANIF10?

- A. Use the command “undo shutdown” under the interface view for VLANIF10
- B. Assign a physical interface that has either an active or inactive physical state to VLAN 10
- C. Assign only a physical interface that has an active physical state to VLAN 10
- D. Add an interface that has an active physical state and a trunk port associated with VLAN 10

**Correct Answer:** C

**Section:** (none)

**Explanation**

**Explanation/Reference:**

**QUESTION 223**

A network administrator wishes to implement VLAN 10 to isolate certain users. It is common however for these users to often change their physical location. Which of the following VLAN implementations should be used?

- A. Port based VLAN assignment
- B. Protocol based VLAN assignment
- C. MAC based VLAN assignment
- D. IP subnet based VLAN assignment

**Correct Answer:** C

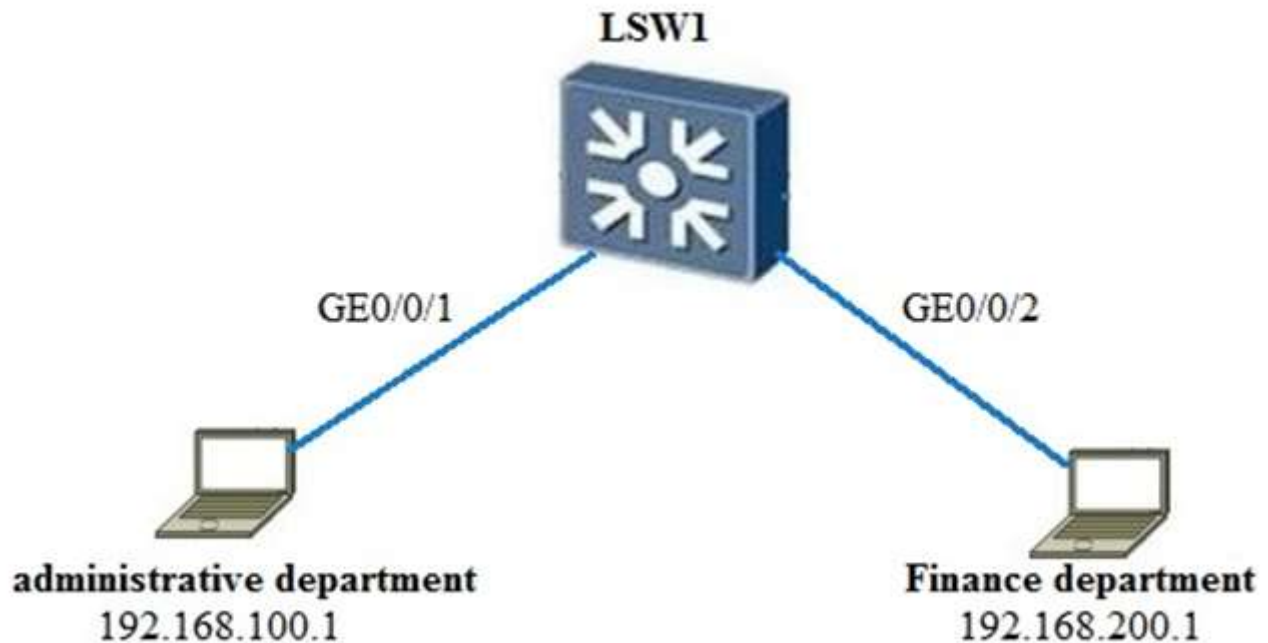
**Section:** (none)

**Explanation**

**Explanation/Reference:**

**QUESTION 224**

Refer to the graphic. GE0/0/1 and GE0/0/2 on the switch are configured as hybrid interfaces. Which of the following statements are true? (Choose all that apply)



```
[LSW1]interface GigabitEthernet0/0/1
[LSW1 - GigabitEthernet0/0/1]port hybrid untagged vlan 10 20
[LSW1 - GigabitEthernet0/0/1]port hybrid pvid vlan 10
[LSW1]interface GigabitEthernet0/0/2
[LSW1 - GigabitEthernet0/0/2]port hybrid untagged vlan 10 20
[LSW1 - GigabitEthernet0/0/2]port hybrid pvid vlan 20
```

- A. The administrative department and the finance department cannot communicate with each other because the VLANs of the two departments are different.
- B. The data frames sent by the administrative department carry tagged VLAN 20 on the switch.
- C. On the switch, the data frames sent by the finance department carry tagged VLAN 20.
- D. The switch can be a Layer 2 or Layer 3 switch because communications do not need to be transmitted through a Layer 3 gateway.
- E. If GE0/0/1 and GE0/0/2 on the switch are changed to trunk ports, the administrative department and finance department can communicate with each other.

**Correct Answer:** BC

**Section:** (none)

**Explanation**

**Explanation/Reference:**

**QUESTION 225**

On the VRP, what is the function of the “interface vlanif <vlan-id>” command?

- A. It is used to create a VLANIF interface
- B. It is used to create a VLANIF interface and enter the VLANIF interface view
- C. It is used to configure a VLAN for a VLANIF interface
- D. There is no such command

**Correct Answer:** B

**Section:** (none)

**Explanation**

**Explanation/Reference:**

**QUESTION 226**

In ARP resolves the protocol address of the remote device on each virtual circuit, including IP addresses and IPX addresses.

- A. True
- B. False

**Correct Answer:** A

**Section:** (none)

**Explanation**

**Explanation/Reference:**

**QUESTION 227**

On an FR network, the DLCI identifies a virtual circuit on an interface. The DLCI must be unique during planning and deployment.

- A. True
- B. False

**Correct Answer:** B

**Section:** (none)

**Explanation**

**Explanation/Reference:**

**QUESTION 228**

If AAA authentication is used on Huawei devices and the remote server does not respond, the authentication can be performed on network devices.

- A. True
- B. False

**Correct Answer:** A

**Section:** (none)

**Explanation**

**Explanation/Reference:**

**QUESTION 229**

An ACL does not filter traffic generated by the Huawei device towards other devices, but only filters forwarded traffic, including traffic generated by other devices to access the Huawei device.

- A. True
- B. False

**Correct Answer:** A

**Section:** (none)

**Explanation**

**Explanation/Reference:**

**QUESTION 230**

Which of the following statements are true about ACL deployment on Huawei devices? (Choose all that apply)

- A. ACL can only be used in the outbound direction of an interface
- B. The same ACL can be used on multiple interfaces
- C. The ACL rules can only be configured in the following sequence: 10, 20, 30...
- D. ACLs cannot be used to filter OSPF traffic because OSPF does not use UDP to encapsulate packets
- E. ACLs can be used to match with the TCP/UDP port IDs of packets and to designate the port ID range

**Correct Answer:** BE

**Section:** (none)

**Explanation**

**Explanation/Reference:**

**QUESTION 231**

SNMP packets are encapsulated in TCP packets.

- A. True
- B. False

**Correct Answer:** B

**Section:** (none)

**Explanation**

**Explanation/Reference:**

**QUESTION 232**

In OSPFv3, router IDs can be used automatically generated by the system.

- A. True
- B. False

**Correct Answer:** A

**Section:** (none)

**Explanation**

**Explanation/Reference:**

**QUESTION 233**

VLSM can expand any IP network segment, including Class D addresses.

- A. TRUE
- B. FALSE

**Correct Answer:** B

**Section:** (none)

**Explanation**

**Explanation/Reference:**

**QUESTION 234**

Refer to the graphic, 00e0-fc99-9999 is a specific host MAC address learned by a switch through ARP and the host changes the IP address three times.

```
<Huawei>display arp dynamic
```

IP ADDRESS	MAC ADDRESS	EXPIRE(M)	TYPE	INTERFACE	VPN-INSTANCE	VLANID
10.137.217.210	00e0-fc01-0203		-	Ethernet1/0/0		
10.2.2.1	00e0-fc99-9999		-	Eth-Trunk0		
192.168.20.1	00e0-fc99-9999		-	Vlanif100		
10.0.0.1	00e0-fc99-9999		-	Vlanif200		
Total:7		Dynamic:2	Static:0	Interface:5		

- A. TRUE
- B. FALSE

**Correct Answer:** A

**Section:** (none)

**Explanation**

**Explanation/Reference:**

**QUESTION 235**

There are two routers (RTA and RTB) between the source device and destination device. The Tracert command is used to detect the path between the two devices. During detection of the first hop (RTA), the source device sends a UDP packet with a TTL of 1 to an interface with a large interface number on the destination device. The TTL turns to 0 when the packet arrives at RTB, upon which RTA sends an ICMP \_\_\_\_\_ message to the source device.

- A. Time Exceeded.
- B. Echo Request.
- C. Echo Reply.
- D. Port Unreachable.

**Correct Answer:** A

**Section:** (none)

**Explanation**

**Explanation/Reference:**

**QUESTION 236**

Which of the following statements are true about ICMP messages? (Multiple Choice)

- A. ICMP messages can record time, including the original time, packet receiving time, and packet sending time.
- B. ICMP messages are encapsulated in IP packets but not at the transport layer.
- C. ICMP messages include error messages, control messages, request/response messages, and update messages.
- D. ICMP does not support redirection.
- E. ICMP messages cannot be used to detect a path's MTU.

**Correct Answer:** BC

**Section:** (none)

**Explanation**

**Explanation/Reference:**

**QUESTION 237**

If a network's broadcast address is 172.16.1.255, which of the following addresses can be the network address?

- A. 172.16.2.0
- B. 172.16.1.253
- C. 172.16.1.128
- D. 172.16.1.1

**Correct Answer:** C

**Section:** (none)

**Explanation**

**Explanation/Reference:**

**QUESTION 238**

On the command line interface of Huawei AR routers, the role of the Save command is to Save the current system time.

- A. TRUE
- B. FALSE

**Correct Answer:** B

**Section:** (none)

**Explanation**

**Explanation/Reference:**

**QUESTION 239**

Which of the following technologies is used to bind MAC addresses to interfaces on a switch?

- A. SEP.
- B. Port security.

- C. ACL.
- D. NAT.

**Correct Answer:** B

**Section:** (none)

**Explanation**

**Explanation/Reference:**

#### **QUESTION 240**

In RSTP, a backup port can replace a faulty root port.

- A. TRUE
- B. FALSE

**Correct Answer:** A

**Section:** (none)

**Explanation**

**Explanation/Reference:**

#### **QUESTION 241**

During STP calculation, the port cost is associated with port bandwidth. Which of the following statements about the relation between port cost and port bandwidth is true?

- A. Port cost decreases when port bandwidth increases.
- B. Port cost increases when port bandwidth increases.
- C. Port cost is consistent with port bandwidth.
- D. Port cost varies randomly according to port bandwidth.

**Correct Answer:** A

**Section:** (none)

**Explanation**

**Explanation/Reference:**

#### **QUESTION 242**

Which of the following descriptions about STP are incorrect? (Multiple Choice)

- A. A layer-2 switching network can have only one designated switch.
- B. All the ports of the root switch are root ports.
- C. All the ports of the root switch are designated ports.
- D. The switch with the smallest priority value is elected as non-root switch.

**Correct Answer:** BD

**Section:** (none)

**Explanation**

**Explanation/Reference:**

#### **QUESTION 243**

Which of the following statements about static route preference on Huawei devices is false?

- A. Static route preference ranges from 0 to 255.
- B. Default static route preference is 60.
- C. Static route preference is either internal or external. Administrators can modify external preferences.
- D. If static route preference is 255, the route cannot be used.

**Correct Answer:** A

**Section:** (none)

**Explanation**

**Explanation/Reference:**

**QUESTION 244**

Refer to the graphic, which of the following statements is true about OSPF topology and configuration?



```
[R1]interface GigabitEthernet0/0/0
[R1-GigabitEthernet0/0/0]ip address 100.1.1.1 255.255.255.0
[R1-GigabitEthernet0/0/0]ospf network-type p2p
[R1-GigabitEthernet0/0/0]ospf dr-priority 100
[R1-GigabitEthernet0/0/0]ospf timer hello 20
[R1]ospf 1
[R1-ospf-1]area 0.0.0.0
[R1-ospf-1-area-0.0.0.0]network 100.1.1.1 0.0.0.0
#
[R2]interface GigabitEthernet0/0/0
[R2-GigabitEthernet0/0/0]ip address 100.1.1.2 255.255.255.0
[R2]ospf 1
[R2-ospf-1] area 0.0.0.0
[R2-ospf-1-area-0.0.0.0]network 100.1.1.2 0.0.0.0
```

- A. A stable OSPF neighbor relationship can be set up between R1 and R2.
- B. After the default network type of the interface on R1 is restored to broadcast, a stable OSPF neighbor relationship can be set up between R1 and R2.
- C. After the default network type of the interface on R1 is restored to broadcast and the hello packet sending interval is changed to 10s, a stable OSPF neighbor relationship can be set up between R1 and R2.
- D. Compared with R1, R2 is more likely to become the DR because the DR priority of the interface on R2 is lower than that of R1.

**Correct Answer:** C

**Section:** (none)

**Explanation**

**Explanation/Reference:**

### QUESTION 245

Refer to the graphic. An administrator has configured OSPF on the two routers, following which he then implements the command `silent-interface s0/0/1` on RTA. What effect will this command have on the network? (Multiple Choice)



- A. The link information advertised by RTB will be maintained in the Link State Database of RTA.
- B. The OSPF neighbor relationship will fail between two routers.
- C. The configuration will not affect the OSPF neighbor relationship between the two routers.
- D. The link information advertised by RTB will no longer be maintained in the Link State Database of RTA.

**Correct Answer:** B

**Section:** (none)

**Explanation**

**Explanation/Reference:**

### QUESTION 246

In an RIP process on a Huawei device, which of the following configurations are correct for advertising network 10.1.1.1/30? (Multiple Choice)

- A. `network 10.1.1.0`
- B. `undo summary`  
`network 10.1.1.0`
- C. `version 2`  
`undo summary`  
`network 10.0.0.0`
- D. `undo summary`  
`network 10.1.0.0`
- E. `network 10.0.0.0`

**Correct Answer:** B

**Section:** (none)

**Explanation**

**Explanation/Reference:**

### QUESTION 247

The following configuration commands implement route backup on RTA for a route to the same destination 10.1.1.0.

```
[RTA]ip route-static 10.1.1.0 24 12.1.1.1 permanent
[RTA]ip route-static 10.1.1.0 24 13.1.1.1
```

- A. TRUE

B. FALSE

**Correct Answer:** B

**Section:** (none)

**Explanation**

**Explanation/Reference:**

**QUESTION 248**

Refer to the command output. Which statement is true regarding this command?

```
ip route-static 10.0.12.0 255.255.255.0 192.168.1.1
```

- A. The configuration represents a static route to the 192.168.1.1 network
- B. The configuration represents a static route to the 10.0.12.0 network.
- C. The preference value of this configured route is 100.
- D. If the router has learned the same destination network via a dynamic routing protocol, the static route will always take precedence.

**Correct Answer:** B

**Section:** (none)

**Explanation**

**Explanation/Reference:**

**QUESTION 249**

Which of the following network types does OSPF support? (Multiple Choice)

- A. Point-to-Point.
- B. Broadcast.
- C. Non-Broadcast Multi-Access.
- D. Point-to-Multipoint.

**Correct Answer:** ABC

**Section:** (none)

**Explanation**

**Explanation/Reference:**

**QUESTION 250**

A DHCP Offer packet can carry only one DNS server address.

- A. TRUE
- B. FALSE

**Correct Answer:** B

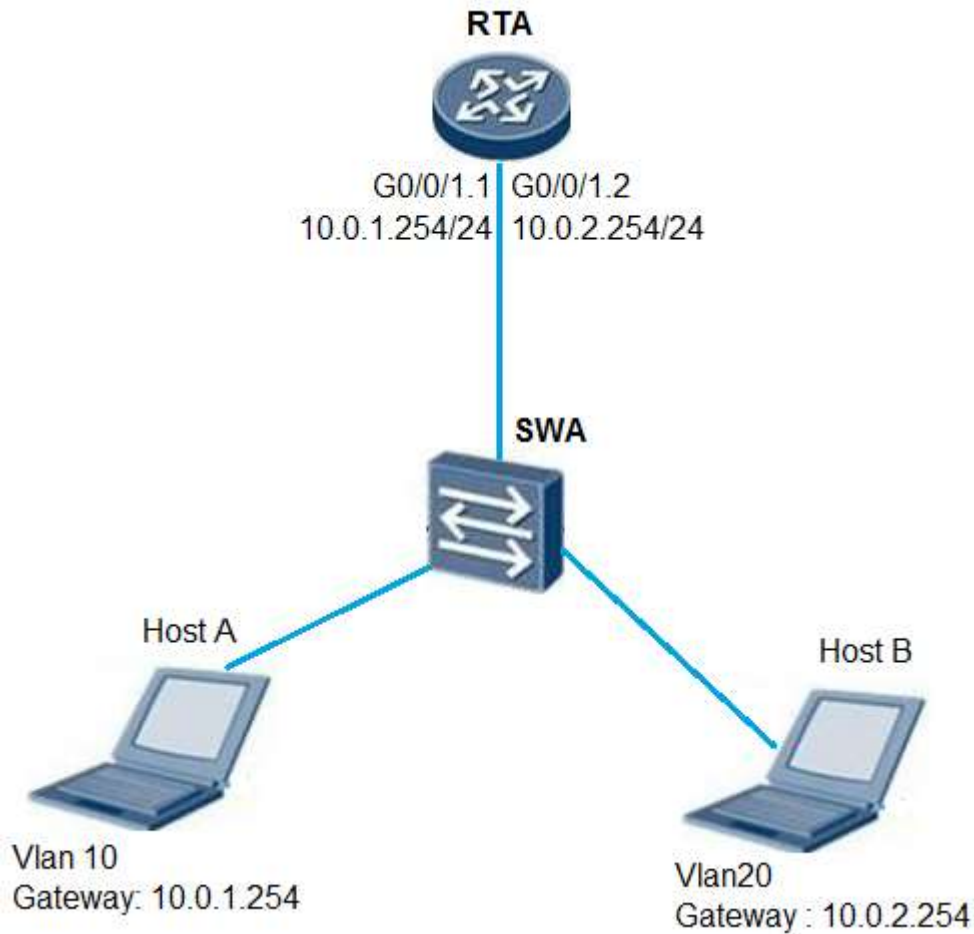
**Section:** (none)

**Explanation**

**Explanation/Reference:**

**QUESTION 251**

Refer to the graphic. Host A and Host B use VLAN routing to facilitate communication. What must be configured on interface G0/0/1.1 of RTA to achieve this?



- A. dot1q termination vid 1.
- B. dot1q termination vid 10.
- C. dot1q termination vid 20.
- D. dot1q termination vid 30.

**Correct Answer: B**

**Section: (none)**

**Explanation**

**Explanation/Reference:**

**QUESTION 252**

Refer to the configuration output. Which following statements are correct? (Multiple choice)

```
[Huawei]interface GigabitEthernet0/0/1
[Huawei-GigabitEthernet0/0/1]port link-type trunk
[Huawei-GigabitEthernet0/0/1]port trunk allow-pass vlan 2 to 4094
```

- A. VLAN 1 cannot pass over interface Gigabit Ethernet 0/0/1.

- B. VLAN 1 can pass over interface Gigabit Ethernet 0/0/1.
- C. Prior to changing the link-type to access, the command “undo port trunk allow-pass vlan all” must be used to renew the default configurations.
- D. Prior to changing the link-type to access, the command “undo port trunk allow-pass vlan 2 to 4096” must be used to renew the default configurations.

**Correct Answer:** AD

**Section:** (none)

**Explanation**

**Explanation/Reference:**

#### **QUESTION 253**

Link aggregation is a common technique in enterprise network. Which of the following description is the advantages of link aggregation? (Multiple Choice)

- A. Improves link bandwidth.
- B. Implements load sharing.
- C. Improves network reliability.
- D. Facilitates data copy for analysis.

**Correct Answer:** ABC

**Section:** (none)

**Explanation**

**Explanation/Reference:**

#### **QUESTION 254**

On Huawei switches, VLAN 4095 cannot be created and VLAN 1 cannot be deleted.

- A. TRUE
- B. FALSE

**Correct Answer:** A

**Section:** (none)

**Explanation**

**Explanation/Reference:**

#### **QUESTION 255**

Refer to the graphic, after the ping 10.1.1.2 command is executed on R1, LSW1 receives a tagged data frame from VLAN 10 on LSW2.



```
[R2]interface GigabitEthernet0/0/0
[R1- GigabitEthernet0/0/0]ip address 10.1.1.1 255.255.255.0
#
[LSW1]interface GigabitEthernet0/0/1
[LSW1-GigabitEthernet0/0/1] port hybrid untagged vlan 10 20
[LSW1-GigabitEthernet0/0/1] port hybrid pvid vlan 10
[LSW1]interface GigabitEthernet0/0/2
[LSW1-GigabitEthernet0/0/2]port link-type trunk
[LSW1-GigabitEthernet0/0/2]port trunk allow-pass vlan 10 20
#
[LSW2]interface GigabitEthernet0/0/2
[LSW2-GigabitEthernet0/0/2]port link-type trunk
[LSW2-GigabitEthernet0/0/2]port trunk allow-pass vlan 10 20
[LSW2]interface vlanif 10
[LSW2-Vlanif10]ip address 10.1.1.2 255.255.255.0
```

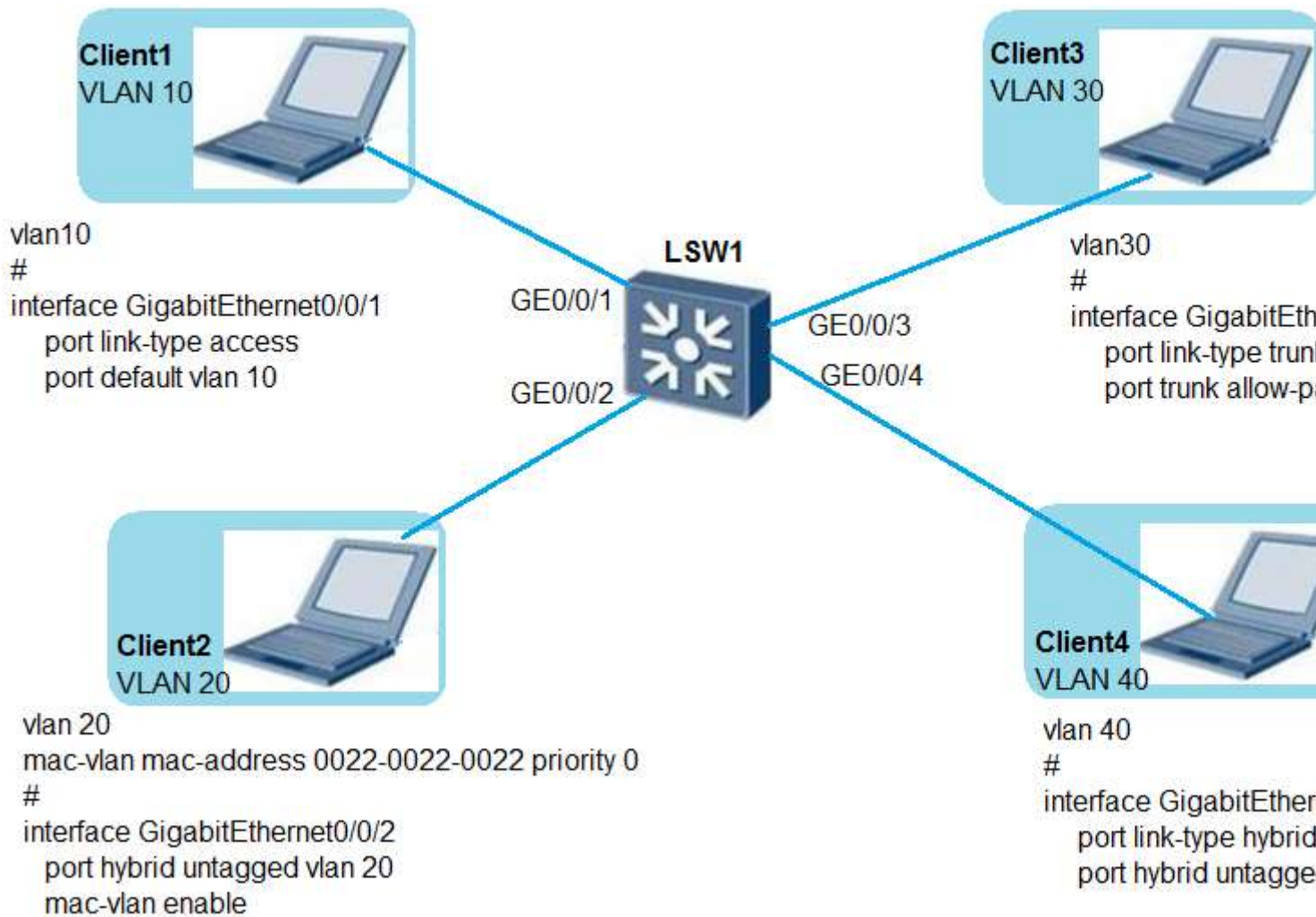
- A. TRUE
- B. FALSE

**Correct Answer:** B  
**Section:** (none)  
**Explanation**

**Explanation/Reference:**

**QUESTION 256**

Refer to the graphic, which of the following statements are true about VLAN configuration on Huawei switches?  
(Multiple Choice)



- A. Client1 belongs to VLAN 10 and the VLAN assignment command on LSW1 is correct.
- B. Client2 belongs to VLAN 20, and the MAC address-based VLAN assignment command on LSW1 is correct.
- C. Client3 is in VLAN 30, and the VLAN assignment command on LSW1 is correct.
- D. Client4 belongs to VLAN 40, and the VLAN assignment command on LSW1 is correct.
- E. Client4 does not belong to VLAN 40, and the VLAN assignment command on LSW1 is incorrect.

**Correct Answer:** ACD

**Section:** (none)

**Explanation**

**Explanation/Reference:**

#### QUESTION 257

Which of the following statements is true about the PPP configuration and deployment?

- A. PPP cannot be used to deliver IP addresses.
- B. PPP supports both CHAP and PAP authentication.
- C. PPP cannot change the keepalive time.
- D. PPP does not support bidirectional authentication.

**Correct Answer:** B  
**Section:** (none)  
**Explanation**

**Explanation/Reference:**

**QUESTION 258**

According to the following topology and configuration, R1 and R2 are connected through low-speed serial cables and PPP is used to encapsulate data link layer packets. When the Holdtime values of R1 and R2 are different, PPP negotiation and communication fail.



```
[R1]interface Serial0/0/0
[R1-Serial0/0/0] ip address 202.10.1.1 255.255.255.0
[R1-Serial0/0/0] timer hold 2
#
[R2]interface Serial0/0/0
[R2-Serial0/0/0] ip address 202.10.1.2 255.255.255.0
```

- A. TRUE
- B. FALSE

**Correct Answer:** A  
**Section:** (none)  
**Explanation**

**Explanation/Reference:**

**QUESTION 259**

Refer to the graphic. IPsec VPN uses ESP to encrypt which fields?



- A. TCP, Data and ESP Trailer.
- B. ESP, TCP and Data.
- C. ESP, TCP, Data and ESP Trailer.
- D. ESP, TCP, Data, ESP Trailer and ESP Auth.

**Correct Answer:** A  
**Section:** (none)  
**Explanation**

**Explanation/Reference:**

**QUESTION 260**

The authentication, authorization and accounting schemes and HWTACACS or RADIUS server templates created on AR routers take effect only after being applied to a domain.

- A. TRUE
- B. FALSE

**Correct Answer:** A

**Section:** (none)

**Explanation**

**Explanation/Reference:**

**QUESTION 261**

Which SNMP version focuses on two main aspects, namely security and administration. The security aspect is addressed by offering both strong authentication and data encryption for privacy. The administration aspect is focused on two parts, namely notification originators and proxy forwarders.

- A. SNMPv1
- B. SNMPv2
- C. SNMPv2c
- D. SNMPv3

**Correct Answer:** D

**Section:** (none)

**Explanation**

**Explanation/Reference:**

**QUESTION 262**

Which of the following route entries can be aggregated into 10.0.0.24/29? (Choose all that apply.)

- A. 10.0.0.25/30
- B. 10.0.0.23/30
- C. 10.0.0.26/30
- D. 10.0.0.22/30

**Correct Answer:** AC

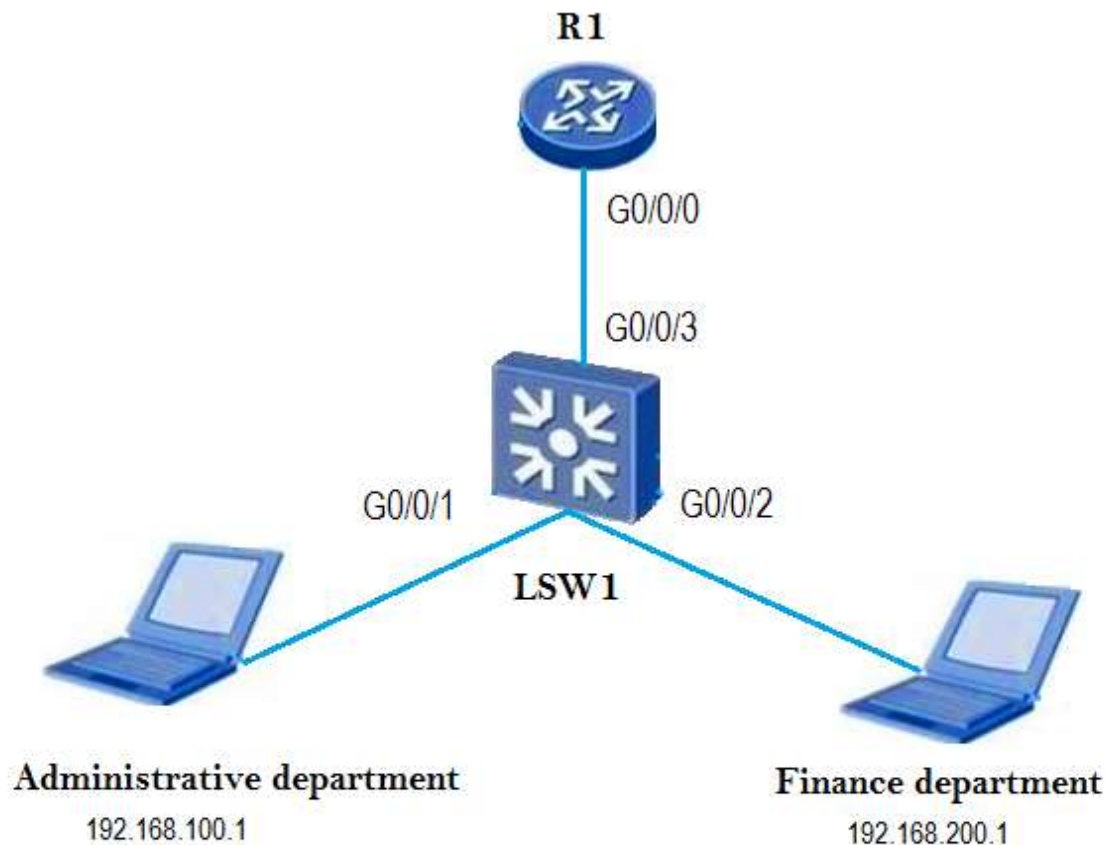
**Section:** (none)

**Explanation**

**Explanation/Reference:**

**QUESTION 263**

According to the configuration of single-armed routing in the following figure, the administrative department and finance department can communicate with each other even the proxy ARP is disabled on the subinterface on R1.



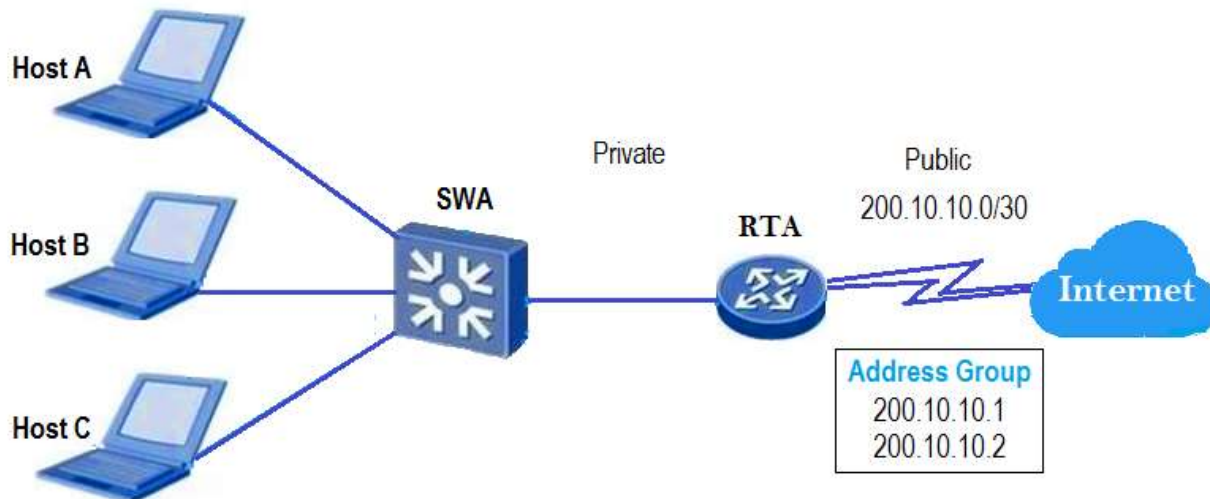
```
[R1] interface GigabitEthernet0/0/0.1
[R1-GigabitEthernet0/0/0.1]dot1q termination vid 10
[R1-GigabitEthernet0/0/0.1] ip address 192.168.100.254.255.255.255.0
[R1] interface GigabitEthernet0/0/0.2
[R1-GigabitEthernet0/0/0.2]dot1q termination vid 20
[R1-GigabitEthernet0/0/0.2] ip address 192.168.100.254.255.255.255.0
```

- A. True
- B. False

**Correct Answer:** B  
**Section:** (none)  
**Explanation**

**Explanation/Reference:**

**QUESTION 264**  
Refer to the graphic.



In the private network, RTA dynamically assigns a public address from the address pool to hosts without port translation. Host C wishes to access the public network while addresses are assigned to Host A and Host B. What will occur as a result?

- A. The first public address will be allocated to Host C, and Host A will be forced offline.
- B. The last public address will be allocated to Host C, and Host B will be forced offline.
- C. Host C will be unable to forward traffic over the public network.
- D. All hosts will have access to the public network through pool address swapping.

**Correct Answer:** C  
**Section:** (none)  
**Explanation**

**Explanation/Reference:**

**QUESTION 265**

After the keepalive function is enabled for a GRE tunnel, the local end of the GRE tunnel sends a keepalive packet to the remote end every 10s.

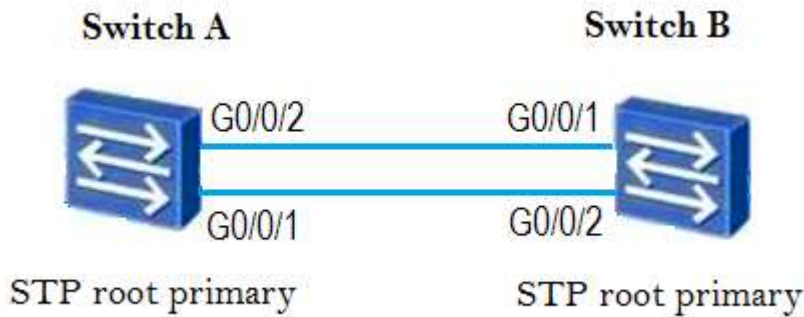
- A. True
- B. False

**Correct Answer:** B  
**Section:** (none)  
**Explanation**

**Explanation/Reference:**

**QUESTION 266**

Refer to the graphic.



Both switches are operating using STP. With exception to those shown, all other default parameters have been maintained. Which port will be blocked?

- A. Port G0/0/1 of switch A.
- B. Port G0/0/2 of switch B.
- C. Port G0/0/1 of switch B.
- D. Port G0/0/2 of switch A.

**Correct Answer:** C

**Section:** (none)

**Explanation**

**Explanation/Reference:**

#### QUESTION 267

Layer 2 switches are data link layer devices that identify MAC addresses of Layer 2 data frames and forward Layer 2 data frames based on MAC addresses. In addition, they record mappings between MAC addresses and interfaces in the MAC address table.

- A. True
- B. False

**Correct Answer:** A

**Section:** (none)

**Explanation**

**Explanation/Reference:**

#### QUESTION 268

In RSTP mode, both alternate and backup ports cannot forward user traffic but can receive, process, and send BPDU.

- A. True
- B. False

**Correct Answer:** A

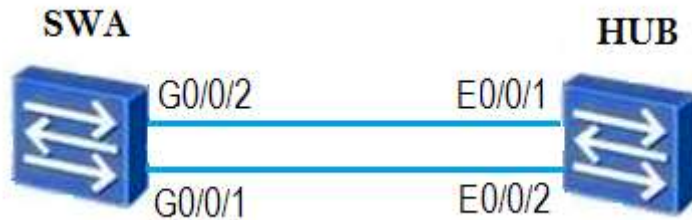
**Section:** (none)

**Explanation**

**Explanation/Reference:**

**QUESTION 269**

Refer to the graphic.



The switch is operating using STP. All default parameters have been maintained. Which port will be assigned a designated port role?

- A. G0/0/1 of switch A.
- B. G0/0/2 of switch A.
- C. E0/0/1 of the hub.
- D. E0/0/2 of the hub.

**Correct Answer:** A

**Section:** (none)

**Explanation**

**Explanation/Reference:**

**QUESTION 270**

How can the default route be generated? (Choose all that apply.)

- A. Manually configured.
- B. Automatically generated by the router.
- C. Generated by dynamic routing protocols.
- D. Generated by link layer protocols.

**Correct Answer:** AC

**Section:** (none)

**Explanation**

**Explanation/Reference:**

**QUESTION 271**

The following figure shows a routing table. When this router receives a packet with a destination IP address of 9.1.1.1, the router forwards the packet based on the route 9.1.0.0/16 because the matched bit number in this route is the largest.

[Huawei] display ip routing-table  
Route Flags: R - relay, D - download to fib

---

Destination/Mask	Proto	Pre	Cost	Flags	NextHop	Interface
0.0.0.0/0	Static	60	0	D	120.0.0.2	Serial1/0/0
8.0.0.0/8	RIP	100	3	D	120.0.0.2	Serial1/0/0
9.0.0.0/8	OSPF	10	50	D	20.0.0.2	Ethernet2/0/0
9.1.0.0/16	RIP	100	4	D	120.0.0.2	Serial1/0/0
11.0.0.0/8	Static	60	0	D	120.0.0.2	Serial1/0/0
20.0.0.0/8	Direct	0	0	D	20.0.0.1	Ethernet2/0/0
20.0.0.1/32	Direct	0	0	D	127.0.0.1	Loopback0

- A. True
- B. False

**Correct Answer:** A

**Section:** (none)

**Explanation**

**Explanation/Reference:**

#### QUESTION 272

Refer to the graphic.

[Huawei] display ip routing-table  
Route Flags: R - relay, D - download to fib

---

Destination/Mask	Proto	Pre	Cost	Flags	NextHop	Interface
1.1.1.1/32	Static	60	0	D	100.1.1.1	GigabitEthernet0/0/0
100.1.1.0/24	Direct	0	0	D	100.1.1.1	GigabitEthernet0/0/0
100.1.1.1/32	Direct	0	0	D	127.0.0.1	GigabitEthernet0/0/0
103.0.0.0/26	Direct	0	0	D	103.0.0.1	GigabitEthernet0/0/2
103.0.0.1/32	Direct	0	0	D	127.0.0.1	GigabitEthernet0/0/2
127.0.0.0/8	Direct	0	0	D	127.0.0.1	InLoopback0
127.0.0.1/32	Direct	0	0	D	127.0.0.1	InLoopback0
200.1.1.0/24	Direct	0	0	D	200.1.1.1	GigabitEthernet0/0/1
200.1.1.0/32	Direct	0	0	D	127.0.0.1	GigabitEthernet0/0/1

The routing table includes direct routes and static routes and the preference of the direct routes cannot be changed.

- A. True
- B. False

**Correct Answer:** A

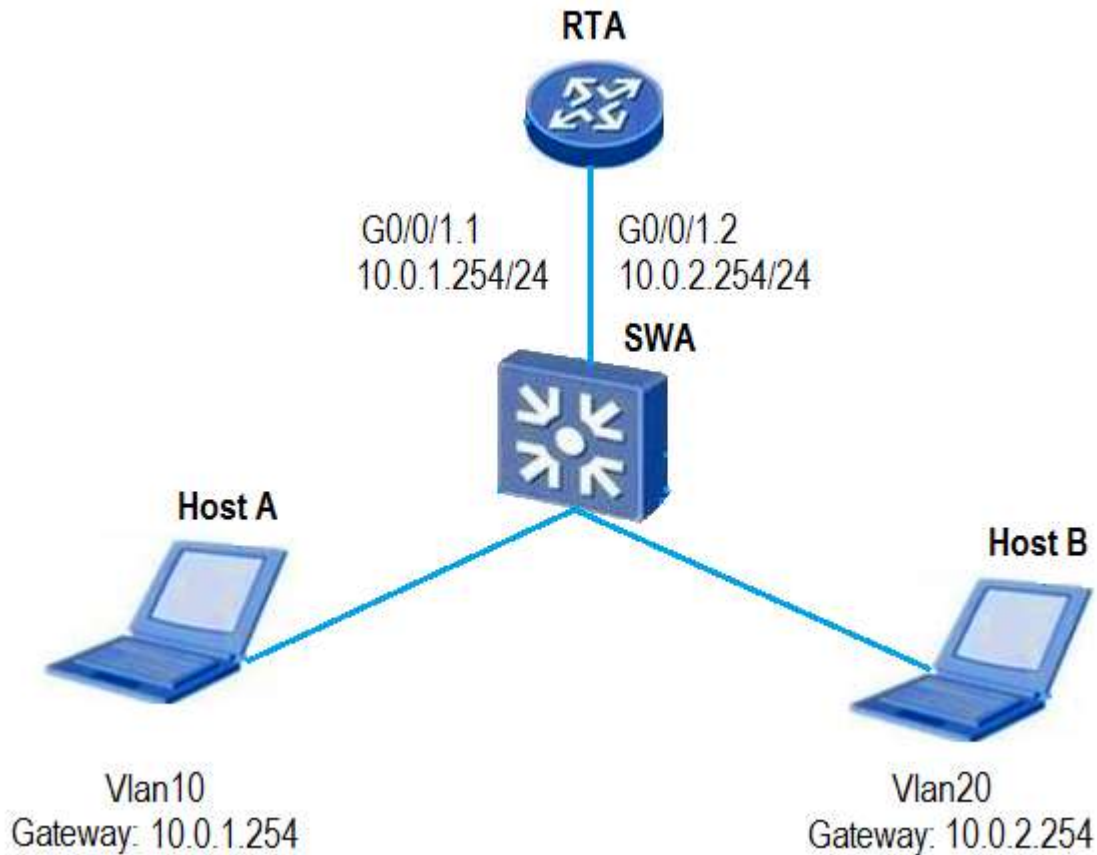
**Section:** (none)

**Explanation**

**Explanation/Reference:**

**QUESTION 273**

Refer to the graphic.



Host A and Host B use VLAN routing to facilitate communication. When interface G0/0/1.2 of RTA receives a frame from Host B, what will RTA do?

- A. RTA will immediately forward the frame via interface G0/0/1.1.
- B. RTA remove the VLAN tag before forwarding the frame.
- C. RTA will remove the VLAN tag and add a new tag for VLAN10 before forwarding the frame.
- D. RTA will discard the frame.

**Correct Answer:** B

**Section:** (none)

**Explanation**

**Explanation/Reference:**

**QUESTION 274**

Refer to the configuration output.

```
[Huawei-GigabitEthernet0/0/0.1] port link-type access
[Huawei-GigabitEthernet0/0/0.1] port default vlan 10
[Huawei-GigabitEthernet0/0/0.2] port link-type trunk
[Huawei-GigabitEthernet0/0/0.2] port trunk-allow pass vlan 10
```

Which of the following statements regarding the configuration output are correct? (Choose all that apply.)

- A. The PVID on interface GigabitEthernet0/0/1 is 10.
- B. The PVID on interface GigabitEthernet0/0/1 is 1.
- C. The PVID on interface GigabitEthernet0/0/2 is 10.
- D. The PVID on interface GigabitEthernet0/0/2 is 1.

**Correct Answer:** AD

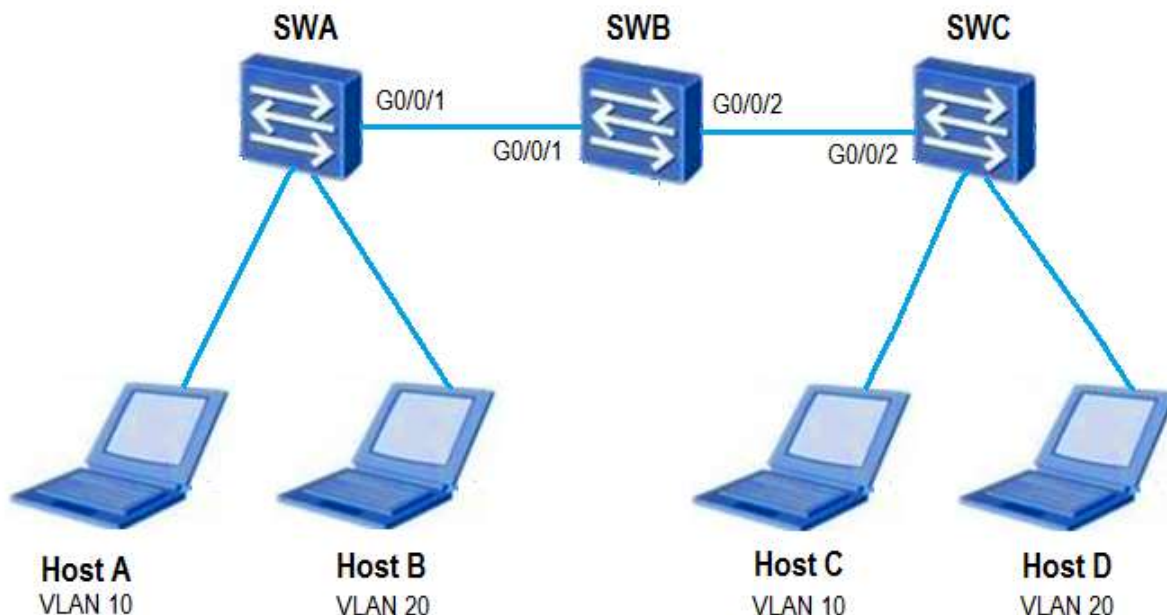
**Section:** (none)

**Explanation**

**Explanation/Reference:**

**QUESTION 275**

Refer to the graphic.



VLANs 10 and 20 have been created on both SWA and SWC. VLAN 10 has been manually created on SWB. SWB has learned VLAN 20 from SWA via GVRP, allowing the hosts to belong to different VLANs as shown. If port Interface G0/0/1 on SWB is changed to fixed mode, what will happen?

- A. Host A will still be able to communicate with Host C.
- B. Host B will still be able to communicate with Host D.
- C. Hosts that belong to the same VLAN will still be able to communicate.
- D. All hosts will be unable to communicate with any other host.

**Correct Answer:** A

**Section: (none)**  
**Explanation**

**Explanation/Reference:**

**QUESTION 276**

On Sx7 series switches, which of the following VLANs can be removed by using command “undo”? (Choose all that apply.)

- A. vlan 1.
- B. vlan 2.
- C. vlan 1024.
- D. vlan 4094.

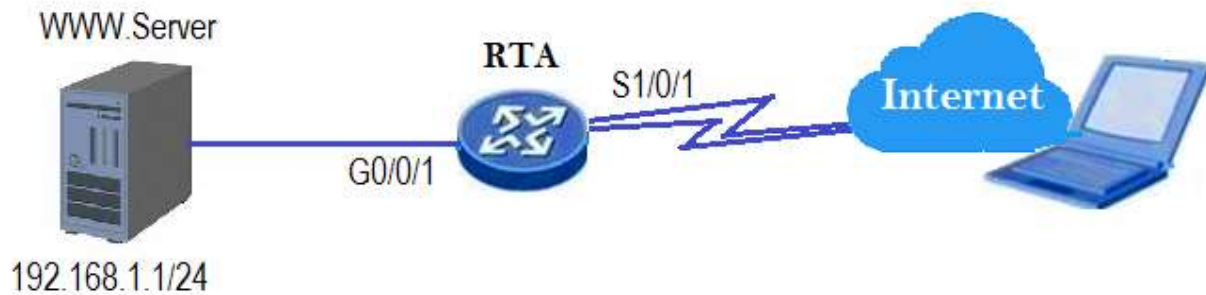
**Correct Answer: BCD**

**Section: (none)**  
**Explanation**

**Explanation/Reference:**

**QUESTION 277**

Refer to the graphic.



A web server in a private network is required to provide HTTP services to public users. The network administrator is required to configure NAT on RTA. Which configuration should be used?

- A. [RTA-Serial1/0/1]nat server protocol tcp global 202.10.10.1 www.inside 192.168.1.1 8080
- B. [RTA-Serial0/0/1]nat server protocol tcp global 192.168.1.1 www.inside 202.10.10.1 8080
- C. [RTA-Gigabitethernet0/0/1]nat server protocol tcp global 202.10.10.1 www.inside 192.168.1.1 8080
- D. [RTA-Gigabitethernet0/0/1]nat server protocol tcp global 192.168.1.1 www.inside 202.10.10.1 8080

**Correct Answer: A**

**Section: (none)**  
**Explanation**

**Explanation/Reference:**

**QUESTION 278**

On an FR network, when the fr inarp command is executed, the interface where static address mapping entries have been configured sends an Inverse ARP Request packet to the remote device to replace the static address mapping entries.

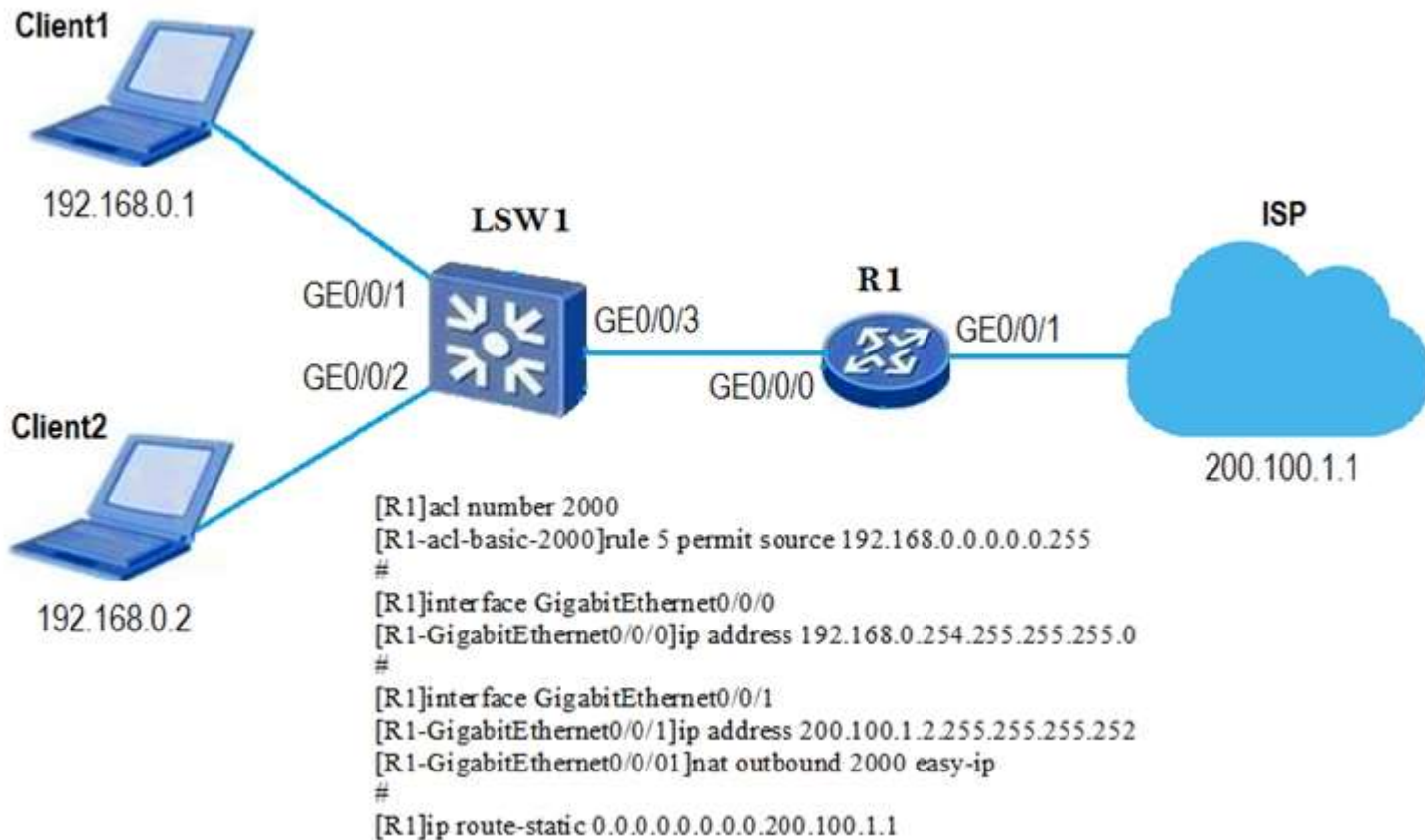
- A. True
- B. False

**Correct Answer:** B  
**Section:** (none)  
**Explanation**

**Explanation/Reference:**

**QUESTION 279**

According to the configuration on R1 shown in the following figure, the two PCs can correctly access the ISP network.



- A. True
- B. False

**Correct Answer:** A  
**Section:** (none)  
**Explanation**

**Explanation/Reference:**