



new

FULL EDITION
FULL EDITION

Number: 350-401

Passing Score:825

Time Limit: 230 min

File Version: 8080



facebook.com/ 3RAB.EL.IT



<https://wa.me/201116860484>

متاح مساعدة في اجتياز الاختبارات
الدولية في نفس اليوم بدون دمب
ضمان نجاح 200%

CompTIA
Get IT Certified

Microsoft

CISCO

ORACLE

HUAWEI

Red Hat

NOKIA

ITIL^{®4}
FOUNDATION

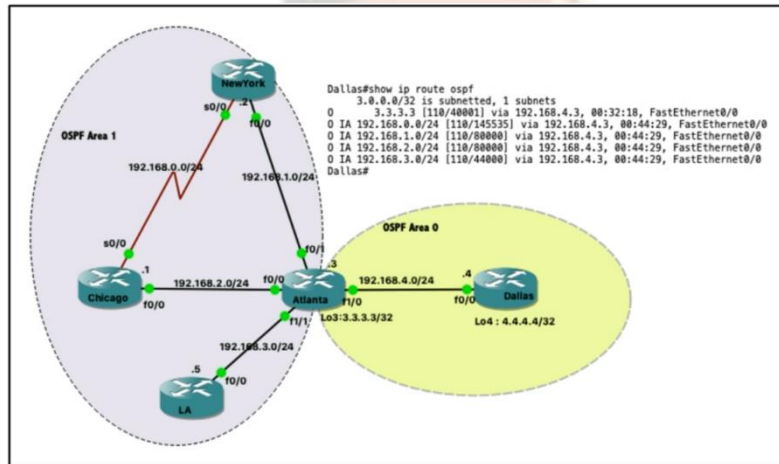
vmware

CEH
Certified Ethical Hacker

PRINCE2[®]
AXELOS
GLOBAL BEST PRACTICE

PMI
Project Management Institute

QUESTION 1



Which command when applied to the Atlanta router reduces type 3 LSA flooding into the backbone area and summarizes the inter-area routes on the Dallas router?

- A. Atlanta(config-route)#area 0 range 192.168.0.0 255.255.252.0
- B. Atlanta(config-route)#area 1 range 192.168.0.0 255.255.252.0
- C. Atlanta(config-route)#area 0 range 192.168.0.0 255.255.248.0
- D. Atlanta(config-route)#area 1 range 192.168.0.0 255.255.248.0

Correct Answer: B

QUESTION 2

```
client.connect (ip, ports=22, username=usr, password=pswd)
stdin, stdout, stderr = client.exec_command ('show ip bgp 192.168.101.0 bestpath\n')
print (stdout)
```

- A. displays the output of the **show** command in a formatted way
- B. connects to a Cisco device using SSH and exports the routing table information
- C. connects to a Cisco device using Telnet and exports the routing table information
- D. displays the output the **show** command in an unformatted way

Correct Answer: B

QUESTION 3

What is the calculation that is used to measure the radiated power of a signal after it has gone through the radio, antenna cable, and antenna?

- A. IdBm
- B. EIRP
- C. dBi
- D. mW

Correct Answer: A

QUESTION 4

How does SSO work with HSRP to minimize network disruptions?

- A. It enables HSRP to elect another switch in the group as the active HSRP switch
- B. It ensures fast failover in the case of link failure
- C. It enables data forwarding along known routes following a switchover, while the routing protocol reconverges
- D. It enables HSRP to failover to the standby RP on the same device

Correct Answer: D

QUESTION 5

```
ip nat pool Internet 10.10.10.1 10.10.10.100 netmask 255.255.255.0
ip nat inside source route-map Users pool Internet
!
ip access-list standard Users
10 permit 192.168.1.0 0.0.0.255
!
route-map Users permit 10
match ip address Users
```

Refer to the exhibit. Which action completes the configuration to achieve a dynamic continuous mapped NAT for all users?

- A. Increase the NAT pool size to support 254 usable addresses
- B. Reconfigure the pool to use the 192.168.1.0 address range
- C. Configure a match-host type NAT pool
- D. Configure a one-to-one type NAT pool

Correct Answer: A

QUESTION 6

What mechanism does PIM use to forward multicast traffic?

- A. PIM sparse mode uses a pull model to deliver multicast traffic
- B. PIM dense mode uses a pull model to deliver multicast traffic
- C. PIM sparse mode uses receivers to register with the RP
- D. PIM sparse mode uses a flood and prune model to deliver multicast traffic

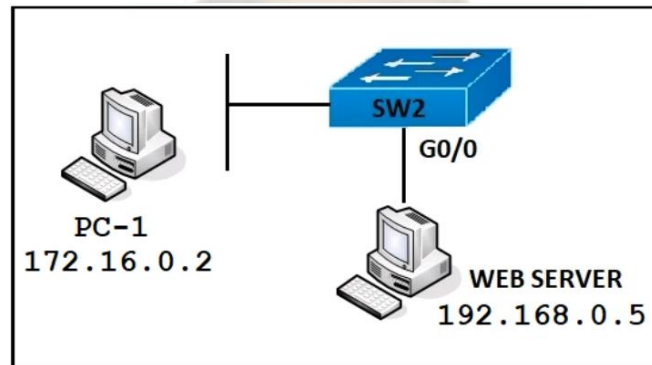
Correct Answer: A

QUESTION 7

Which characteristic distinguishes Ansible from Chef?

- A. Ansible lacks redundancy support for the master server. Chef runs two masters in an active/active mode
- B. Ansible uses Ruby to manage configurations. Chef uses YAML to manage configurations
- C. Ansible pushes the configuration to the client. Chef client pulls the configuration from the server
- D. The Ansible server can run on Linux, Unix or Windows. The Chef server must run on Linux or Unix

Correct Answer: C



Refer to the exhibit. PC-1 must access the web server on port 8080. To allow this traffic, which statement must be added to an access control list that is applied on SW2 port G0/0 in the inbound direction?

- A. permit host 172.16.0.2 host 192.168.0.5 eq 8080
- B. permit host 192.168.0.5 host 172.16.0.2 eq 8080
- C. permit host 192.168.0.5 eq 8080 host 172.16.0.2
- D. permit host 192.168.0.5 it 8080 host 172.16.0.2

Correct Answer: C

QUESTION 9

Which solution do IaaS service providers use to extend a Layer 2 segment across a Layer 3 network?

- A. VLAN
- B. VTEP
- C. VXLAN
- D. VRF

Correct Answer: C

QUESTION 10

What is YANG used for?

- A. scraping data via CLI
- B. providing a transport for network configuration data between client and server
- C. processing SNMP read-only polls
- D. describing data models

Correct Answer: D

QUESTION 11

Drag and drop the LISP components from the left onto the function they perform on the right. Not all options are used.

LISP map resolver	accepts LISP encapsulated map requests
LISP proxy ETR	learns of EID prefix mapping entries from an ETR
LISP route reflector	receives traffic from LISP sites and sends it to non-LISP sites
LISP ITR	receives packets from site-facing interfaces
LISP map server	

Correct Answer:

	LISP map resolver
	LISP map server
LISP route reflector	LISP proxy ETR
	LISP ITR

QUESTION 12

A customer has 20 stores located throughout a city. Each store has a single Cisco AP managed by a central WLC. The customer wants to gather analytics for users in each store. Which technique supports these requirements?

- A. hyperlocation
- B. angle of arrival
- C. presence
- D. trilateration

Correct Answer: C

QUESTION 13

R1	R2
key chain cisco123 key 1 key-string Cisco123!	key chain cisco123 key 1 key-string cisco123!
Ethernet0/0 - Group 10 State is Active 8 state changes, last state change 00:02:49 Virtual IP address is 192.168.0.1 Active virtual MAC address is 0000.0c07.ac0a Local virtual MAC address is 0000.0c07.ac0a (vl default) Hello time 5 sec, hold time 15 sec Next hello sent in 2.880 secs Authentication MD5, key-chain "cisco123" Preemption enabled Active router is local Standby router is unknown Priority 255 (configured 255) Group name is "workstation-group" (cfgd)	Ethernet0/0 - Group 10 State is Active 17 state changes, last state change 00:02:17 Virtual IP address is 192.168.0.1 Active virtual MAC address is 0000.0c07.ac0a Local virtual MAC address is 0000.0c07.ac0a (vl default) Hello time 10 sec, hold time 30 sec Next hello sent in 6.720 secs Authentication MD5, key-chain "cisco123" Preemption disabled Active router is local Standby router is unknown Priority 200 (configured 200) Group name is "workstation-group" (cfgd)

An engineer is installing a new pair of routers in a redundant configuration. When checking on the standby status of each router the engineer notices that the routers are not functioning as expected. Which action will resolve the configuration error?

- A. configure matching hold and delay timers
- B. configure matching key-strings
- C. configure matching priority values
- D. configure unique virtual IP addresses

Correct Answer: B

QUESTION 14

```
vlan 222
  remote-span
!
vlan 223
  remote-span
!
monitor session 1 source interface FastEthernet0/1 tx
monitor session 1 source interface FastEthernet0/2 rx
monitor session 1 source interface port-channel 5
monitor session 1 destination remote vlan 222
!
```

What is the result when a technician adds the monitor session 1 destination remote vlan 223 command?

- A. The RSPAN VLAN is replaced by VLAN 223
- B. RSPAN traffic is sent to VLANs 222 and 223
- C. An error is flagged for configuring two destinations
- D. RSPAN traffic is split between VLANs 222 and 223

Correct Answer: A

QUESTION 15

```
event snmp oid 1.3.6.1.4.1.9.9.109.1.1.1.1.3 get-type next entry-op gt entry-val 80 poll-interval 5
!  
action 1.0 cli command "enable"  
action 2.0 syslog msg "high cpu"  
action 3.0 cli command "term length 0"
```

Refer to the exhibit. An engineer must create a script that appends the output of the show process cpu sorted command to a file. Which action completes the configuration?

- A. action 4.0 syslog command "show process cpu sorted | append flash:high-cpu-file"
- B. action 4.0 publish-event "show process cpu sorted | append flash:high-cpu-file"
- C. action 4.0 ens-event "show process cpu sorted | append flash:high-cpu-file"
- D. action 4.0 cli command "show process cpu sorted | append flash:high-cpu-file"

Correct Answer: D

QUESTION 16

```
Switch2#  
01:25:08: %PM-4-ERR_DISABLE: channel-misconfig error detected on  
Fa0/23, putting Fa0/23 in err-disable  
state  
01:25:08: %PM-4-ERR_DISABLE: channel-misconfig error detected on  
Fa0/24, putting Fa0/24 in err-disable  
state  
Switch2#  
  
Switch1#show etherchannel summary  
  
!output omitted  
  
Group Port-channel Protocol Ports  
-----+-----+-----+-----  
1 Po2(SD) LACP Fa1/0/23(D)  
  
Switch2#show etherchannel summary  
  
!output omitted  
  
Group Port-channel Protocol Ports  
-----+-----+-----+-----  
1 Po1(SD) - Fa0/23(D) Fa0/24(D)
```

Refer to the exhibit An engineer is configuring an EtherChannel between Switch1 and Switch2 and notices the console message on Switch2. Based on the output, which action resolves this issue?

- A. Configure the same port channel interface number on both switches
- B. B. Configure less member ports on Switch2
- C. C. Configure more member ports on Switch1
- D. D. Configure the same EtherChannel protocol on both switches

Correct Answer: D

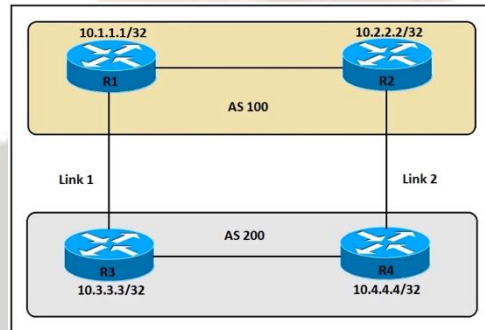
QUESTION 17

Which design principle should be followed in a Cisco SD-Access wireless network deployment?

- A. The WLC is connected outside of the fabric.
- B. The WLC is part of the fabric underlay.
- C. The access point is connected outside of the fabric.
- D. The WLC is part of the fabric overlay.

Correct Answer: D

QUESTION 18



Refer to the exhibit. An engineer must ensure that all traffic leaving AS 200 will choose Link 2 as the exit point. Assuming that all BGP neighbor relationships have been formed and that the attributes have not been changed on any of the routers, which configuration accomplish task?

- A. R4(config-router)#bgp default local-preference 200
- B. R3(config-router)#neighbor 10.1.1.1 weight 200
- C. R3(config-router)#bgp default local-preference 200
- D. R4(config-router)#neighbor 10.2.2.2 weight 200

Correct Answer: A

QUESTION 19

```

R1#traceroute
Protocol [Ip]:
Target IP address: 3.3.3.3
Source address: 1.1.1.1
Numeric display [n]:
Timeout in seconds: [3]:
Probe count [3]:
Minimum Time to Live [1]:
Maximum Time to Live [30]:
Port Number [33434]:
Loose, Strict, Record, Timestamp, Verbose [none]: Record
Number of hops [9]:
Loose, Strict, Record, Timestamp, Verbose [RV]:
Type escape sequence to abort.

Continued --->

Tracing the route to 3.3.3.3
  1 10.99.69.2  36 msec
    Received packet has options
    Total option bytes = 40, padded length=40
      Record route:
        (10.99.69.1) <*>
        (0.0.0.0)
        (0.0.0.0)
      End of list
    ----output omitted----
  2 10.99.69.6  1A
    Received packet has options
    Total option bytes = 40, padded length=40
      Record route:
        (10.99.69.1)
        (10.99.69.5) <*>
        (0.0.0.0)
        (0.0.0.0)
      End of list
    1A
    ----output omitted----
    
```

Refer to the exhibit. The traceroute fails from R1 to R3. What is the cause of the failure?

- A. An ACL applied inbound on fa0/1 of R3 is dropping the traffic
- B. An ACL applied inbound on loopback0 of R2 is dropping the traffic
- C. The loopback on R3 is in a shutdown state
- D. Redistribution of connected routes into OSPF is not configured

Correct Answer: A

QUESTION 20

```

> Frame 24: 138 bytes on wire (1104 bits), 138 bytes captured (1104 bits) on interface 0
> Ethernet II, Src: 50:00:00:01:00:01 (50:00:00:01:00:01), Dst: 50:00:00:02:00:01 (50:00:00:02:00:01)
> Internet Protocol Version 4, Src: 209.165.202.130, Dst: 209.165.202.134
> Generic Routing Encapsulation (GRE)
> Internet Protocol Version 4, Src: 10.111.111.1, Dst: 10.111.111.2
> Internet Control Message Protocol
    
```

A GRE tunnel has been created between HQ and BR routers. What is the tunnel IP on the HQ router?

- A. 209.165.202.130
- B. 10.111.111.2
- C. 10.111.111.1
- D. 209.165.202.134

Correct Answer: C

QUESTION 21

The login method is configured on the VTY lines of a router with these parameters. The first method for authentication is TACACS. If TACACS is unavailable, login is allowed without any provided credentials. Which configuration accomplishes this task?

A. R1#sh run | include aaa
aaa new-model
aaa authentication login VTY group tacacs+ none
aaa session-id common
line vty 0 4
password 7 0202039485748
R1#sh run | include username
R1#

B. R1#sh run | include aaa
aaa new-model
aaa session-id common
R1#sh run | section vty
line vty 0 4
R1#sh run | include username
R1#

C. R1#sh run | include aaa
aaa new-model
aaa authentication login default group tacacs+ none
aaa session-id common
R1#sh run | section vty
line vty 0 4
password 7 0202039485748

D. R1#sh run | include aaa
aaa new-model
aaa authentication login default group tacacs+
aaa session-id common
R1#sh run | section vty
line vty 0 4
transport input none
R1#

Correct Answer: C

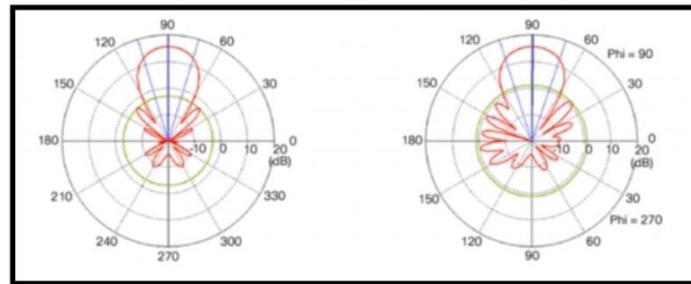
QUESTION 22

How is a data modeling language used?

- A. To enable data to be easily structured, grouped, validated, and replicated
- B. To represent finite and well-defined network elements that cannot be changed
- C. To model the flows of unstructured data within the infrastructure
- D. To provide human readability to scripting languages

Correct Answer: A

QUESTION 23



Refer to the exhibit. Which type of antenna do the radiation patterns present?

- A. Patch
- B. Omnidirectional
- C. Yagi
- D. Dipole

Correct Answer: A

QUESTION 24

When using TLS for syslog, which configuration allows for secure and reliable transportation of messages to its default port?

- A. logging host 10.2.3.4 vrf mgmt transport tcp port 6514
- B. logging host 10.2.3.4 vrf mgmt transport udp port 6514
- C. logging host 10.2.3.4 vrf mgmt transport tcp port 514
- D. logging host 10.2.3.4 vrf mgmt transport udp port 514

Correct Answer: A

QUESTION 25

```
R1#show access-list 100
Extended IP access list 100
 10 deny ip any any
 20 permit ip 192.168.0.0 0.0.255.255 any
 30 permit ip any 192.168.0.0 0.0.255.255
```

Refer to the exhibit. Extended access-list 100 is configured on interface GigabitEthernet0/0 in an inbound direction, but it does not have the expected behavior of allowing only packets to or from 192.168.0.0/16. Which command set properly configures the access list?

- A. R1(config)#no access-list 100 deny ip any any
- B. R1(config)#ip access-list extended 100
R1(config-ext-nacl)#5 permit ip any any
- C. R1(config)#ip access-list extended 100
R1(config-ext-nacl)#no 10
- D. R1(config)#no access-list 100 seq 10
R1(config-ext-nacl)#access-list 100 seq 40 deny ip any any

Correct Answer: C

```
#!/usr/bin/env python3

from env_lab import dnac
import json
import requests
import urllib3
from requests.auth import HTTPBasicAuth
from prettytable import PrettyTable

dnac_devices = PrettyTable(['Hostname','Platform Id','Software Type','Software Version','Up
Time'])
dnac_devices.padding_width = 1
headers = {
    'content-type': "application/json",
    'x-auth-token': ""
}

def dnac_login(host, username, password):
    url = "https://{}api/system/v1/auth/token".format(host)
    response = requests.request("POST", url, auth=HTTPBasicAuth(username, password),
        headers=headers, verify=False)
    return response.json()["Token"]

def network_device_list(dnac, token):
    url = "https://{}api/v1/network-device".format(dnac[host])
    headers["x-auth-token"] = token
    response = requests.get(url, headers=headers, verify=False)
    data = response.json()
    for item in data["response"]:
        dnac_devices.add_row([item["hostname"],item["platformId"],item["softwareType"],item["soft
wareVersion"],item["upTime"]])
```

Refer to the exhibit. Which code results in the working Python script displaying a list of network devices from the Cisco DNA Center?

- A.

```
network_device_list(dnac["host"], dnac["username"],dnac["password"])
login = dnac_login(dnac)
print(dnac_devices)
```
- B.

```
login = dnac_login(dnac["host"], dnac["username"], dnac["password"])

network_device_list(dnac, login)
for item in dnac_devices:
    print(dnac_devices.item)
```
- C.

```
network_device_list(dnac["host"], dnac["username"],dnac["password"])
login = dnac_login(dnac)
for item in dnac_devices:
    print(dnac_devices.item)
```
- D.

```
login = dnac_login(dnac["host"], dnac["username"], dnac["password"])
network_device_list(dnac, login)
print(dnac_devices)
```

Correct Answer: D

```
interface Vlan10
ip vrf forwarding Clients
ip address 192.168.1.1 255.255.255.0
!
interface Vlan20
ip vrf forwarding Servers
ip address 172.16.1.1 255.255.255.0
!
interface Vlan30
ip vrf forwarding Printers
ip address 10.1.1.1 255.255.255.0
-- output omitted for brevity --
router eigrp 1
10.0.0.0
172.16.0.0
192.168.1.0
```

Refer to the exhibit. An engineer attempts to configure a router on a stick to route packets between Clients, Servers, and Printers; however, initial tests show that this configuration is not working. Which command set resolves this issue?

A. router eigrp 1
network 10.0.0.0 255.0.0.0
network 172.16.0.0 255.255.0.0
network 192.168.1.0 255.255.0.0

B. router eigrp 1
network 10.0.0.0 255.255.255.0
network 172.16.0.0 255.255.255.0
network 192.168.1.0 255.255.255.0

C. interface Vlan10
no ip vrf forwarding Clients
!
interface Vlan20
no ip vrf forwarding Servers
!
interface Vlan30
no ip vrf forwarding Printers

D. interface Vlan10
no ip vrf forwarding Clients
ip address 192.168.1.2 255.255.255.0
!
interface Vlan20
no ip vrf forwarding Servers
ip address 172.16.1.2 255.255.255.0
!
interface Vlan30
no ip vrf forwarding Printers
ip address 10.1.1.2 255.255.255.0

Correct Answer: D

Which entity is responsible for maintaining Layer 2 isolation between segments in a VXLAN environment?

- A. switch fabric
- B. host switch
- C. VTEP
- D. VNID

Correct Answer: D

QUESTION 29

How does EIGRP differ from OSPF?

- A. EIGRP is more prone to routing loops than OSPF
- B. EIGRP supports equal or unequal path cost, and OSPF supports only equal path cost.
- C. EIGRP has a full map of the topology, and OSPF only knows directly connected neighbors
- D. EIGRP uses more CPU and memory than OSPF

Correct Answer: B

QUESTION 30

```
DSW2#sh spanning-tree vlan 10
VLAN0010
Spanning tree enabled protocol ieee
Root ID    Priority    10
           Address    0013.80f9.8880
           Cost        2
           Port        9 (FastEthernet1/0/7)
           Hello Time  2 sec Max Age 20 sec Forward Delay 15 sec

Bridge ID  Priority    4106 (priority 4096 sys-id-ext 10)
           Address    0018.7363.4300
           Hello Time  2 sec Max Age 20 sec Forward Delay 15 sec
           Aging Time  300

Interface Role Sts Cost Prio.Nbr Type
-----
Fa1/0/7   Root FWD 2    128.9   P2p
Fa1/0/10  Desg FWD 4    128.12  P2p
Fa1/0/11  Desg FWD 2    128.13  P2p
Fa1/0/12  Desg FWD 2    128.14  P2p

DSW2#
*Mar 3 07:29:24.854: %SPANTREE-2-BLOCK_BPDUGUARD: Received BPDU on port Fa1/0/7
with BPDU Guard enabled. Disabling port.
*Mar 3 07:29:24.854: %PM-4-ERR_DISABLE: bpduguard error detected on Fa1/0/7, put
ting Fa1/0/7 in err-disable state
*Mar 3 07:29:24.879: %SPANTREE-2-BLOCK_BPDUGUARD: Received BPDU on port Fa1/0/7
with BPDU Guard enabled. Disabling port.
*Mar 3 07:29:25.869: %LINEPROTO-5-UPDOWN: Line protocol on Interface FastEtherne
t1/0/7, changed state to down
*Mar 3 07:29:26.884: %LINK-3-UPDOWN: Interface FastEthernet1/0/7, changed state
to down
```

Refer to the exhibit. An engineer entered the command no spanning-tree bpduguard enable on interface Fa1/0/7. What is the effect of this command on Fa1/0/7?

- A. It remains in err-disabled state until the errdisable recovery cause failed-port-state command is entered in the global configuration mode.
- B. It remains in err-disabled state until the shutdown/no shutdown command is entered in the interface configuration mode.
- C. It remains in err-disabled state until the no shutdown command is entered in the interface configuration mode.
- D. It remains in err-disabled state until the spanning-tree portfast bpduguard disable command is entered in the interface configuration mode.

Correct Answer: C

QUESTION 31

An engineer must create an EEM applet that sends a syslog message in the event a change happens in the network due to trouble with an OSPF process. Which action should the engineer use?

```
event manager applet LogMessage
event routing network 172.30.197.0/24 type all
```

- A. action 1 syslog msg "OSPF ROUTING ERROR"
- B. action 1 syslog send "OSPF ROUTING ERROR"
- C. action 1 syslog pattern "OSPF ROUTING ERROR"
- D. action 1 syslog write "OSPF ROUTING ERROR"

Correct Answer: A

QUESTION 32

Which resource is able to be shared among virtual machines deployed on the same physical server?

- A. VM configuration file
- B. operating system
- C. disk
- D. applications

Correct Answer: C

QUESTION 33

A company has an existing Cisco 5520 HA cluster using SSO. An engineer deploys a new single Cisco Catalyst 9800 WLC to test new features. The engineer successfully configures a mobility tunnel between the 5520 cluster and 9800 WLC. Clients connected to the corporate WLAN roam seamlessly between access points on the 5520 and 9800 WLC. After a failure on the primary 5520 WLC, all WLAN services remain functional; however, clients cannot roam between the 5520 and 9800 controllers without dropping their connection. Which feature must be configured to remedy the issue?

- A. mobility MAC on the 5520 cluster
- B. mobility MAC on the 9800 WLC
- C. new mobility on the 5520 cluster
- D. new mobility on the 9800 WLC

Correct Answer: B

QUESTION 34

Which method does Cisco DNA Center use to allow management of non-Cisco devices through southbound protocols?

- A. It creates device packs through the use of an SDK
- B. It obtains MIBs from each vendor that details the APIs available.
- C. It uses an API call to interrogate the devices and register the returned data.
- D. It imports available APIs for the non-Cisco device in a CSV format.

Correct Answer: A

QUESTION 35

Which deployment option of Cisco NGFW provides scalability?

- A. tap
- B. clustering
- C. inline tap
- D. high availability

Correct Answer: B

QUESTION 36

```
interface Vlan10
ip vrf forwarding Customer1
ip address 192.168.1.1 255.255.255.0
!
interface Vlan20
ip vrf forwarding Customer2
ip address 172.16.1.1 255.255.255.0
!
interface Vlan30
ip vrf forwarding Customer3
ip address 10.1.1.1 255.255.255.0
```

Refer to the exhibit. Which configuration allows Customer2 hosts to access the FTP server of Customer1 that has the IP address of 192.168.1.200?

- A. ip route vrf Customer1 172.16.1.0 255.255.255.0 172.16.1.1 global
ip route vrf Customer2 192.168.1.200 255.255.255.255 192.168.1.1 global
ip route 192.168.1.0 255.255.255.0 Vlan10
ip route 172.16.1.0 255.255.255.0 Vlan20
- B. ip route vrf Customer1 172.16.1.0 255.255.255.0 172.16.1.1 Customer2
ip route vrf Customer2 192.168.1.200 255.255.255.255 192.168.1.1 Customer1
- C. ip route vrf Customer1 172.16.1.0 255.255.255.0 172.16.1.1 Customer1
ip route vrf Customer2 192.168.1.200 255.255.255.255 192.168.1.1 Customer2
- D. ip route vrf Customer1 172.16.1.1 255.255.255.255 172.16.1.1 global
ip route vrf Customer2 192.168.1.200 255.255.255.0 192.168.1.1 global
ip route 192.168.1.0 255.255.255.0 Vlan10
ip route 172.16.1.0 255.255.255.0 Vlan20

Correct Answer: A

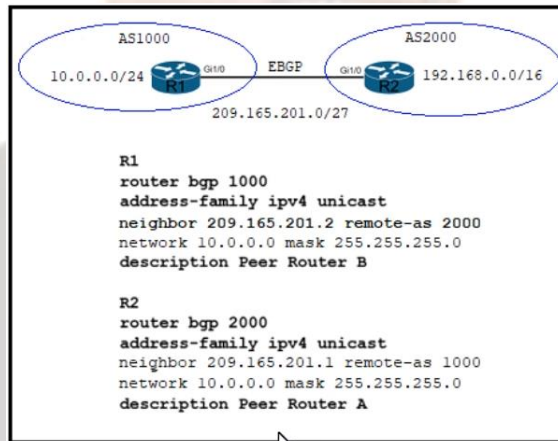
QUESTION 37

Which two characteristics define the Intent API provided by Cisco DNA Center? (Choose two)

- A. northbound API
- B. southbound API
- C. device-oriented
- D. business outcome oriented
- E. procedural

Correct Answer: AD

QUESTION 38



Refer to the exhibit. Which two commands are needed to allow for full reachability between AS 1000 and AS 2000? (Choose two)

- A. R2#no network 10.0.0.0 255.255.255.0
- B. R1#network 19.168.0.0 mask 255.255.0.0
- C. R1#no network 10.0.0.0 255.255.255.0
- D. R2#network 209.165.201.0 mask 255.255.192.0
- E. R2#network 192.168.0.0 mask 255.255.0.0

Correct Answer: AE

```
flow monitor FLOW-MONITOR-1
 record netflow ipv6 original-input
 exit
!
sampler SAMPLER-1
 mode deterministic 1 out-of 2
 exit
!
ip cef
ipv6 cef
!
interface GigabitEthernet 0/0/0
 ipv6 address 2001:DB8:2:ABCD::2/48
 ipv6 flow monitor FLOW-MONITOR-1 sampler SAMPLER-1 input
!
```

Refer to the exhibit. What is the effect of introducing the sampler feature into the Flexible NetFlow configuration on the router?

- A. NetFlow updates to the collector are sent 50% less frequently.
- B. Every second IPv4 packet is forwarded to the collector for inspection.
- C. The resolution of sampling data increases, but it requires more performance from the router.
- D. CPU and memory utilization are reduced when compared with what is required for full NetFlow.

Correct Answer: B

QUESTION 40

In a wireless Cisco SD-Access deployment, which roaming method is used when a user moves from one access point to another on a different access switch using a single WLC?

- A. Layer 3
- B. inter-xTR
- C. auto anchor
- D. fast roam

Correct Answer: D

QUESTION 41

```
>>> netconf_data["GigabitEthernet"][0]["enabled"]  
u'false'  
>>> netconf_data["GigabitEthernet"][1]["enabled"]  
u'true'  
>>> netconf_data["GigabitEthernet"][2]["enabled"]  
u'false'  
>>> netconf_data["GigabitEthernet"][0]["description"]  
u'my description'
```

Refer to the exhibit. Which Python code snippet prints the descriptions of disabled interfaces only?

- A. for interface in netconf_data["GigabitEthernet"]:
 if interface["disabled"] != 'true':
 print(interface["description"])
- B. for interface in netconf_data["GigabitEthernet"]:
 if interface["enabled"] != 'true':
 print(interface["description"])
- C. for interface in netconf_data["GigabitEthernet"]:
 print(interface["enabled"])
 print(interface["description"])
- D. for interface in netconf_data["GigabitEthernet"]:
 if interface["enabled"] != 'false':
 print(interface["description"])

Correct Answer: B

QUESTION 42

```
SW1# show interfaces gigabitethernet 0/0 switchport  
Name: Gi0/0  
Switchport: Enabled  
Administrative Mode: dynamic auto  
Operational Mode: trunk  
Administrative Trunking Encapsulation: dot1q  
Operational Trunking Encapsulation: dot1q  
Negotiation of Trunking: Off  
Access Mode VLAN: 1 (default)  
Trunking Native Mode VLAN: 99 (NATIVE)  
Administrative Native VLAN tagging: enabled  
Voice VLAN: none  
...output omitted...  
  
SW2# show interfaces gigabitethernet 0/1 switchport  
Name: Gi0/1  
Switchport: Enabled  
Administrative Mode: dynamic auto  
Operational Mode: trunk  
Administrative Trunking Encapsulation: negotiate  
Operational Trunking Encapsulation: dot1q  
Negotiation of Trunking: On  
Access Mode VLAN: 1 (default)  
Trunking Native Mode VLAN: 99 (NATIVE)  
Administrative Native VLAN tagging: enabled  
Voice VLAN: none  
...output omitted...
```

```
graph LR  
  SW1[SW1] --- SW2[SW2]  
  SW1 -- Ge0/1 --> PC1[PC1] (Vlan200)  
  SW1 -- Ge0/2 --> PC2[PC2] (Vlan200)  
  SW2 -- Ge0/1 --> PC3[PC3] (Vlan100)  
  SW2 -- Ge0/2 --> PC4[PC4] (Vlan100)
```

The connection between SW1 and SW2 is not operational. Which two actions resolve the issue? (Choose two)

- A. configure switchport mode access on SW2
- B. configure switchport nonegotiate on SW2
- C. configure switchport mode trunk on SW2
- D. configure switchport mode dynamic desirable on SW2
- E. configure no switchport nonegotiate on SW1

Correct Answer: DE

QUESTION 43

What is provided by the Stealthwatch component of the Cisco Cyber Threat Defense solution?

- A. real-time threat management to stop DDoS attacks to the core and access networks
- B. real-time awareness of users, devices, and traffic on the network
- C. malware control
- D. dynamic threat control for web traffic

Correct Answer: B

QUESTION 44

How does the EIGRP metric differ from the OSPF metric?

- A. The EIGRP metric is calculated based on bandwidth only. The OSPF metric is calculated on delay only.
- B. The EIGRP metric is calculated based on delay only. The OSPF metric is calculated on bandwidth and delay.
- C. The EIGRP metric is calculated based on hop count and bandwidth. The OSPF metric is calculated on bandwidth and delay.
- D. The EIGRP metric is calculated based on bandwidth and delay. The OSPF metric is calculated on bandwidth only.

Correct Answer: D

QUESTION 45

```
Router#show ip ospf interface
GigabitEthernet0/1.40 is up, line protocol is up
Internet Address 10.3.5.254/24, Area 0, Attached via Network Statement
Process ID 1, Router ID 172.16.11.29, Network Type BROADCAST, Cost: 1
Topology-MTID Cost Disabled Shutdown Topology Name
0 1 no no Base
Transmit Delay is 1 sec, State DR, Priority 1
Designated Router (ID) 172.16.11.29, Interface address 10.3.5.254
No backup designated router on this network
Timer intervals configured, Hello 10, Dead 40, Wait 40, Retransmit 5
oob-resync timeout 40
No Hellos (Passive interface)
Supports Link-local Signaling (LLS)
! lines omitted for brevity
GigabitEthernet0/1 is up, line protocol is up
Internet Address 172.16.30.1/24, Area 0, Attached via Network Statement
Process ID 1, Router ID 172.16.11.29, Network Type BROADCAST, Cost: 1
Topology-MTID Cost Disabled Shutdown Topology Name
0 1 no no Base
Transmit Delay is 1 sec, State DR, Priority 1
Designated Router (ID) 172.16.11.29, Interface address 172.16.30.1
No backup designated router on this network
Timer intervals configured, Hello 10, Dead 40, Wait 40, Retransmit 5
oob-resync timeout 40
No Hellos (Passive interface)
Supports Link-local Signaling (LLS)
! lines omitted for brevity
GigabitEthernet0/0 is up, line protocol is up
Internet Address 172.16.11.29/24, Area 0, Attached via Network Statement
Process ID 1, Router ID 172.16.11.29, Network Type BROADCAST, Cost: 1
Topology-MTID Cost Disabled Shutdown Topology Name
0 1 no no Base
Transmit Delay is 1 sec, State DROTHER, Priority 1
Designated Router (ID) 172.16.11.27, Interface address 172.16.11.27
Backup Designated router (ID) 172.16.11.30, Interface address 172.16.11.30
Timer intervals configured, Hello 10, Dead 40, Wait 40, Retransmit 5
oob-resync timeout 40
Hello due in 00:00:07
Supports Link-local Signaling (LLS)
! lines omitted for brevity
```

Refer to the exhibit. A network engineer configures OSPF and reviews the router configuration. Which interface or interfaces are able to establish OSPF adjacency?

- A. GigabitEthernet0/1 and GigabitEthernet0/1.40
- B. Gigabit Ethernet0/0 and GigabitEthernet0/1
- C. only GigabitEthernet0/0
- D. only GigabitEthernet0/1

Correct Answer: C

QUESTION 46

Which action is performed by Link Management Protocol in a Cisco stackwise virtual domain?

- A. It discovers the stackwise domain and brings up SVL interfaces
- B. It rejects any unidirectional link traffic forwarding
- C. It determines if the hardware is compatible to form the stackwise virtual domain
- D. It determines which switch becomes active or standby

Correct Answer: B

QUESTION 47

What does the number in an NTP stratum level represent?

- A. The amount of offset between the device clock and true time.
- B. The amount of drift between the device clock and true time.
- C. The number of hops it takes to reach the authoritative time source.
- D. The number of hops it takes to reach the master time server.

Correct Answer: C

QUESTION 48

Drag and drop the characteristic from the left onto the orchestration tools that they describe on the right

uses a pull model

uses playbooks

procedural

declarative

Ansible

Puppet

Correct Answer:

Ansible

uses playbooks

procedural

Puppet

uses a pull model

declarative

QUESTION 49

Which statement about TLS is true when using RESTCONF to write configurations on network devices?

- A. It is provided using NGINX acting as a proxy web server
- B. It is not supported on Cisco devices
- C. It requires certificates for authentication
- D. It is used for HTTP and HTTPS requests

Correct Answer: A

QUESTION 50

An engineer is configuring local web authentication on a WLAN. The engineer chooses the Authentication radio button under the Layer 3 Security options for Web Policy. Which device presents the web authentication for the WLAN?

- A. ISE server
- B. local WLC
- C. RADIUS server
- D. anchor WLC

Correct Answer: B

QUESTION 51

Which OSPF network types are compatible and allow communication through the two peering devices?

- A. broadcast to nonbroadcast
- B. point-to-multipoint to nonbroadcast
- C. broadcast to point-to-point
- D. point-to-multipoint to broadcast

Correct Answer: A

QUESTION 52

Which unit is used to express the signal-to-noise ratio?

- A. dbm
- B. amp
- C. mw
- D. db

Correct Answer: D

QUESTION 53

What is a Type 2 hypervisor?

- A. installed as an application on an already installed operating system
- B. runs directly on a physical server and includes its own operating system
- C. supports over-allocation of physical resources
- D. also referred to as a "bare metal hypervisor" because it sits directly on the physical server

Correct Answer: B

QUESTION 54

Which configuration restricts the amount of SSH that a router accepts 100 kbps?

A.

```
class-map match-all CoPP_SSH
  match access-group name CoPP_SSH
  !
policy-map CoPP_SSH
  class CoPP_SSH
  police cir 100000
  exceed-action drop
  !
!
!
interface GigabitEthernet0/1
  ip address 209.165.200.225 255.255.255.0
  ip access-group EGRESS out
  service-policy input CoPP_SSH
!
ip access-list extended CoPP_SSH
  permit tcp any any eq 22
```

B.

```
class-map match-all CoPP_SSH
  match access-group name CoPP_SSH
  !
policy-map CoPP_SSH
  class CoPP_SSH
  police cir 100000
  exceed-action drop
  !
!
!
interface GigabitEthernet0/1
  ip address 209.165.200.225 255.255.255.0
  ip access-group EGRESS out
  service-policy input CoPP_SSH
!
ip access-list extended CoPP_SSH
  deny tcp any any eq 22
```

C.

```
class-map match-all CoPP_SSH
  match access-group name CoPP_SSH
  !
policy-map CoPP_SSH
  class CoPP_SSH
  police cir 100000
  exceed-action drop
  !
!
!
control-plane
  service-policy input CoPP_SSH
!
ip access-list extended CoPP_SSH
  permit tcp any any eq 22
```

D.

```
class-map match-all CoPP_SSH
  match access-group name CoPP_SSH
  !
policy-map CoPP_SSH
  class CoPP_SSH
  police cir 100000
  exceed-action drop
  !
!
!
control-plane transit
  service-policy input CoPP_SSH
!
ip access-list extended CoPP_SSH
  permit tcp any any eq 22
```

Correct Answer: C

QUESTION 55

An engineer creates the configuration below. Drag and drop the authentication methods from the left into the order of priority on the right. Not all options are used.

tacacs servers of group ACE	priority 1
local configured username in non-case-sensitive format	priority 2
local configured username in case-sensitive format	priority 3
AAA servers of ACE group	priority 4
AAA servers of AAA_RADIUS group	
If no method works, then deny login.	

Correct Answer:

tacacs servers of group ACE	AAA servers of ACE group
local configured username in non-case-sensitive format	AAA servers of AAA_RADIUS group
	local configured username in case-sensitive format
	If no method works, then deny login.

QUESTION 56

Which two operations are valid for RESTCONF? (Choose two)

- A. HEAD
- B. REMOVE
- C. PULL
- D. PATCH
- E. ADD
- F. PUSH

Correct Answer: AD

QUESTION 57

How do cloud deployments differ from on-prem deployments?

- A. Cloud deployments require longer implementation times than on-premises deployments
- B. Cloud deployments are more customizable than on-premises deployments.
- C. Cloud deployments have lower upfront costs than on-premises deployments.
- D. Cloud deployments require less frequent upgrades than on-premises deployments.

Correct Answer: C

QUESTION 58

Based on the output below, which Python code shows the value of the “upTime” key?

```
{  
  "response": [{  
    "family": "Routers",  
    "type": "Cisco ASR 1001-X Router",  
    "errorCode": null,  
    "location": null,  
    "macAddress": "00:c8:8b:80:bb:00",  
    "hostname": "asr1001-x.abc.inc", "role": "BORDER ROUTER",  
    "lastUpdateTime": 1577391299537,  
    "serialNumber": "FXS1932Q1SE",  
    "softwareVersion": "16.3.2",  
    "locationName": null,  
    "upTime": "49 days, 13:43:44:13",  
    "lastUpdated": "2019-12-22 16:35:21"  
  }]  
}
```

- A. `json_data = response.json()
print(json_data[response][0][upTime])`
- B. `json_data = response_json()
print(json_data[„response“][„family“][„upTime“])`
- C. `son_data = response.json()
print(json_data[„response“][0][„upTime“])`
- D. `json_data = json.loads(response.text)
print(json_data[„response“][„family“][„upTime“])`

Correct Answer: C

QUESTION 59

An engineer must protect their company against ransom ware attacks. Which solution allows the engineer to block the execution stage and prevent file encryption?

- A. Use Cisco AMP deployment with the Malicious Activity Protection engine enabled
- B. Use Cisco AMP deployment with the Exploit Prevention engine enabled
- C. Use Cisco Firepower and block traffic to TOR networks
- D. Use Cisco Firepower with Intrusion Policy and snort rules blocking SMB exploitation

Correct Answer: A

QUESTION 60

What is a characteristic of a WLC that is in master controller mode?

- A. The master controller is responsible for load balancing all connecting clients to other controllers.
- B. Configuration on the master controller is executed on all wireless LAN controllers.
- C. All wireless LAN controllers are managed by the master controller.
- D. All new APs that join the WLAN are assigned to the master controller.

Correct Answer: D

QUESTION 61

Which function does a fabric AP perform in a Cisco SD-Access deployment?

- A. It updates wireless clients' locations in the fabric.
- B. It connects wireless clients to the fabric.
- C. It manages wireless clients' membership information in the fabric.
- D. It configures security policies down to wireless clients in the fabric.

Correct Answer: B

QUESTION 62

Which JSON syntax is valid?

- A. {"switch": "name": "dist1", "interfaces": ["gig1", "gig2", "gig3"]}
- B. {,switch": (, "name": "dist1", "interfaces": [, "gig1", "gig2", "gig3"])
- C. {"switch": {"name": "dist1", "interfaces": ["gig1", "gig2", "gig3"]}}
- D. {/"switch"/: {/"name"/: "dist1", /"interfaces"/: ["gig1", "gig2", "gig3"]}}

Correct Answer: C

QUESTION 63

An engineer runs the sample code, and the terminal returns this output. Which change to the sample code corrects this issue?

Sample Code

```
#!/usr/bin/env python
```

```
import json  
import sys
```

```
test_json = """
```

```
{  
  "type": "Cisco ASR 1001-X Router",  
  "lastUpdateTime": 1552395419725,  
  "macAddress": "00:c8:8b:80:bb:00",  
  "serialNumber": "FXS1932Q1SE"  
}
```

```
"""
```

```
print(json.load(test_json))
```

Output

```
$ python print_json.py
```

```
Traceback (most recent call last):
```

```
  File "question_3.py", line 15, in <module>
```

```
    print(json.load(test_json))
```

```
  File
```

```
"/System/Library/Framework/Python.framework/Versions/2.7/lib/python2.7/json/_init_.py", line 286 in load  
    return loads(fp.read(),
```

```
AttributeError: 'str' object has no attribute 'read'
```

- A. Change the JSON method from load() to loads().
- B. Enclose null in the test_json string in double quotes
- C. Use a single set of double quotes and condense test_json to a single line
- D. Call the read() method explicitly on the test_json string

Correct Answer: A

QUESTION 64

```
switch1(config)# interface GigabitEthernet 1/1
switch1(config-if)# switchport mode trunk
switch1(config-if)# switchport trunk allowed vlan 10,20,30,40,50,60,70-90
switch1(config)# exit
switch1(config)# monitor session 1 source vlan 10
switch1(config)# monitor session 1 destination remote vlan 70

switch2(config)# interface GigabitEthernet 1/1
switch2(config-if)# switchport mode trunk
switch2(config-if)# switchport trunk allowed vlan 10,20,30,40,50,60,80-90
switch2(config)# exit
switch2(config)# monitor session 2 source remote vlan 70
switch2(config)# monitor session 2 destination interface GigabitEthernet1/1
```

Refer to the exhibit. A network administrator configured RSPAN to troubleshoot an issue between switch1 and switch2. The switches are connected using interface GigabitEthernet 1/1. An external packet capture device is connected to switch2 interface GigabitEthernet1/2. Which two commands must be added to complete this configuration? (Choose two)

A. switch1(config)# interface GigabitEthernet 1/1
switch1(config-if)# switchport mode access
switch1(config-if)# switchport access vlan 10

switch2(config)# interface GigabitEthernet 1/1
switch2(config-if)# switchport mode access
switch2(config-if)# switchport access vlan 10

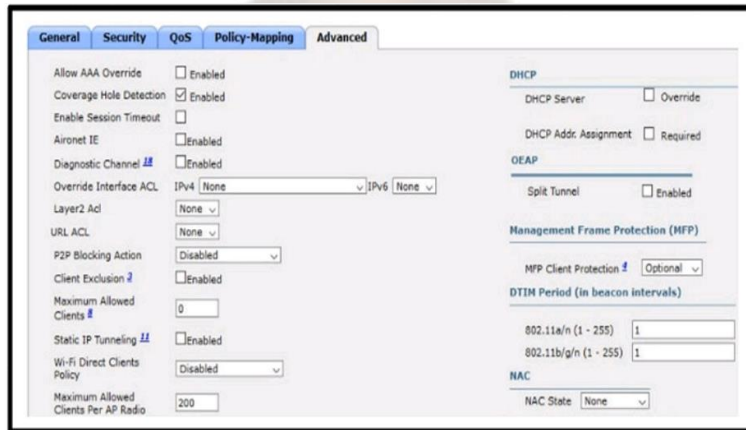
B. switch2(config-if)# switchport trunk allowed vlan 10,20,30,40,50,60,70-80

C. switch2(config)# monitor session 1 source
remote vlan 70
switch2(config)# monitor session 1 destination
interface GigabitEthernet1/1

D. switch2(config)# monitor session 2 destination vlan 10

E. switch2(config)# monitor session 1 source
remote vlan 70
switch2(config)# monitor session 1 destination
interface GigabitEthernet1/2

Correct Answer: BE



Refer to the exhibit. An engineer is investigating why guest users are able to access other guest user devices when the users are connected to the customer guest WLAN. What action resolves this issue?

- A. implement P2P blocking
- B. implement split tunneling
- C. implement Wi-Fi direct policy
- D. implement MFP client protection

Correct Answer: A

QUESTION 66

Drag and drop the DHCP messages that are exchanged between a client and an AP into the order they are exchanged on the right.

DHCP request	Step 1
DHCP offer	Step 2
DHCP discover	Step 3
DHCP ack	Step 4

Correct Answer:

DHCP discover
DHCP offer
DHCP request
DHCP ack

QUESTION 67

```
Router#show run | b vty
line vty 0 4
  session-timeout 30
  exec-timeout 120 0
  session-limit 30
  login local
line vty 5 15
  session-timeout 30
  exec-timeout 30 0
  session-limit 30
  login local
```

Refer to the exhibit. Only administrators from the subnet 10.10.10.0/24 are permitted to have access to the router. A secure protocol must be used for the remote access and management of the router instead of clear-text protocols. Which configuration achieves this goal?

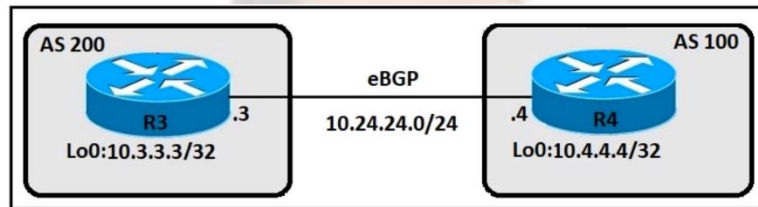
A. access-list 23 permit 10.10.10.0 0.0.0.255
line vty 0 4
access-class 23 in
transport input ssh

B. access-list 23 permit 10.10.10.0 0.0.0.255
line vty 0 15
access-class 23 in
transport input ssh

C. access-list 23 permit 10.10.10.0 0.0.0.255
line vty 0 15
access-class 23 out
transport input all

D. access-list 23 permit 10.10.10.0 255.0.0.0
line vty 0 15
access-class 23 in
transport input ssh

Correct Answer: B



Refer to the exhibit. An engineer must establish eBGP peering between router R3 and router R4. Both routers should use their loopback interfaces as the BGP router ID. Which configuration set accomplishes this task?

A. R3(config)#router bgp 200
R3(config-router)#neighbor 10.24.24.4 remote-as 100
R3(config-router)#bgp router-id 10.3.3.3

R4(config)#router bgp 100
R4(config-router)#neighbor 10.24.24.3 remote-as 200
R4(config-router)#bgp router-id 10.4.4.4

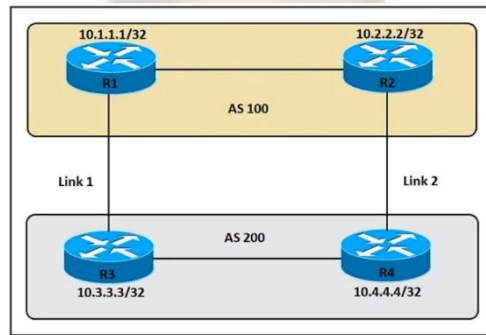
B. R3(config)#router bgp 200
R3(config-router)#neighbor 10.4.4.4 remote-as 100
R3(config-router)#neighbor 10.4.4.4 update-source loopback0

R4(config)#router bgp 100
R4(config-router)#neighbor 10.3.3.3 remote-as 200
R4(config-router)#neighbor 10.3.3.3 update-source loopback0

C. R3(config)#router bgp 200
R3(config-router)#neighbor 10.24.24.4 remote-as 100
R3(config-router)#neighbor 10.24.24.4 update-source loopback0

R4(config)#router bgp 100
R4(config-router)#neighbor 10.24.24.3 remote-as 200
R4(config-router)#neighbor 10.24.24.3 update-source loopback0

Correct Answer: A



Refer to the exhibit. An engineer must ensure that all traffic entering AS 200 from AS 100 chooses link 2 and that all BGP neighbor relationships have been formed and that attributes have not been changed on any of the routers. Which configuration accomplishes this task?

A. R4(config)#route-map PREPEND permit 10
R4(config-route-map)#set as-path prepend 100 100 100

R4(config)#router bgp 200
R4(config-router)#neighbor 10.2.2.2 route-map PREPEND in

B. R3(config)#route-map PREPEND permit 10
R3(config-route-map)#set as-path prepend 100 100 100

R3(config)#router bgp 200
R3(config-router)#neighbor 10.1.1.1 route-map PREPEND in

C. R4(config)#route-map PREPEND permit 10
R4(config-route-map)#set as-path prepend 200 200 200

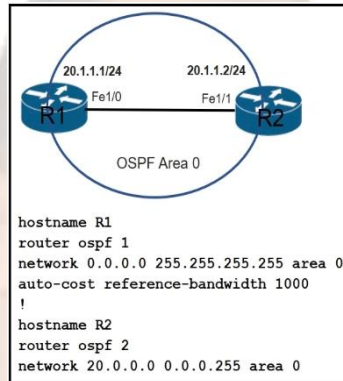
R4(config)#router bgp 200
R4(config-router)#neighbor 10.2.2.2 route-map PREPEND out

D. R3(config)#route-map PREPEND permit 10
R3(config-route-map)#set as-path prepend 200 200 200

R3(config)#router bgp 200
R3(config-router)#neighbor 10.1.1.1 route-map PREPEND out

Correct Answer: D

QUESTION 70



Which command must be applied to R2 for an OSPF neighborship to form?

- A. network 20.1.1.2 0.0.255.255 area 0
- B. network 20.1.1.2 255.255.255.255 area 0
- C. network 20.1.1.2 0.0.0.0 area 0
- D. network 20.1.1.2 255.255.0.0 area 0

Correct Answer: C

QUESTION 71

Which function is handled by vManage in the Cisco SD-WAN fabric?

- A. Establishes IPsec tunnels with nodes
- B. Distributes policies that govern data forwarding
- C. Performs remote software upgrades for WAN Edge, vSmart and vBond
- D. Establishes BFD sessions to test liveness of links and nodes

Correct Answer: C

QUESTION 72

Which is a fact about Cisco EAP-FAST?

- A. It requires a client certificate.
- B. It is an IETF standard.
- C. It does not require a RADIUS server certificate.
- D. It operates in transparent mode.

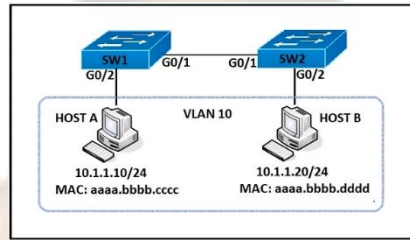
Correct Answer: C

QUESTION 73

What are two differences between the RIB and the FIB? (Choose two)

- A. The FIB is derived from the data plane, and the RIB is derived from the FIB.
- B. The RIB is a database of routing prefixes, and the FIB is the information used to choose the egress interface for each packet.
- C. FIB is a database of routing prefixes, and the RIB is the information used to choose the egress interface for each packet.
- D. The FIB is derived from the control plane, and the RIB is derived from the FIB.
- E. The RIB is derived from the control plane, and the FIB is derived from the RIB.

Correct Answer: BE



Refer to the exhibit. An engineer must deny HTTP traffic from host A to host B while allowing all other communication between the hosts. Which command set accomplishes this task?

A. SW1(config)# ip access-list extended DENY-HTTP
SW1(config-ext-nacl)#deny tcp host 10.1.1.10 host 10.1.1.20 eq www

SW1(config)# ip access-list extended MATCH_ALL
SW1(config-ext-nacl)#permit ip any any

SW1(config)# vlan access-map HOST-A-B 10
SW1(config-access-map)# match ip address DENY-HTTP
SW1(config-access-map)# action drop

B. SW1(config)# ip access-list extended DENY-HTTP
SW1(config-ext-nacl)#permit tcp host 10.1.1.10 host 10.1.1.20 eq www

SW1(config)# ip access-list extended MATCH_ALL
SW1(config-ext-nacl)# permit ip any any

SW1(config)# vlan access-map HOST-A-B 10
SW1(config-access-map)# match ip address DENY-HTTP
SW1(config-access-map)# action drop
SW1(config)# vlan access-map HOST-A-B 20
SW1(config-access-map)# match ip address MATCH_ALL
SW1(config-access-map)# action forward
SW1(config)# vlan filter HOST-A-B vlan 10

C. SW1(config)# mac access-list extended HOST-A-B
SW1(config-ext-mac)# permit host aaaa.bbbb.cccc aaaa.bbbb.dddd

SW1(config)# ip access-list extended DENY-HTTP
SW1(config-ext-nacl)#permit tcp host 10.1.1.10 host 10.1.1.20 eq www

SW1(config)# vlan access-map DROP-MAC 10
SW1(config-access-map)# match mac address HOST-A-B
SW1(config-access-map)# action forward
SW1(config)# vlan access-map HOST-A-B 20
SW1(config-access-map)# match ip address DENY-HTTP
SW1(config-access-map)# action drop
SW1(config)# vlan filter HOST-A-B vlan 10

D. SW1(config)# mac access-list extended HOST-A-B
SW1(config-ext-nacl)# permit host aaaa.bbbb.cccc aaaa.bbbb.dddd

SW1(config)# ip access-list extended DENY-HTTP
SW1(config-ext-nacl)#deny tcp host 10.1.1.10 host 10.1.1.20 eq www

SW1(config)#vlan access-map DROP-MAC 10
SW1(config-access-map)# match mac address HOST-A-B
SW1(config-access-map)# action drop
SW1(config)# vlan access-map HOST-A-B 20
SW1(config-access-map)# match ip address DENY-HTTP
SW1(config-access-map)# action drop

Correct Answer: B

QUESTION 75

What is the differences between TCAM and the MAC address table?

- A. Router prefix lookups happens in CAM. MAC address table lookups happen in TCAM
- B. The MAC address table supports partial matches. TCAM requires an exact match
- C. The MAC address table is contained in CAM. ACL and QoS information is stored in TCAM
- D. TCAM is used to make Layer 2 forwarding decisions. CAM is used to build routing tables

Correct Answer: C

QUESTION 76

Which antenna type should be used for a site-to-site wireless connection?

- A. Omnidirectional
- B. Yagi
- C. dipole
- D. patch

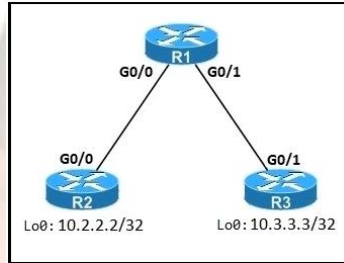
Correct Answer: B

QUESTION 77

In a Cisco DNA Center Plug and Play environment, why would a device be labeled unclaimed?

- A. The device has not been assigned a workflow.
- B. The device could not be added to the fabric.
- C. The device had an error and could not be provisioned.
- D. The device is from a third-party vendor.

Correct Answer: A



An engineer must deny Telnet traffic from the loopback interface of router R3 to the loopback interface of router R2 during the weekend hours. All other traffic between the loopback interfaces of routers R3 and R2 must be allowed at all times. Which command accomplish this task?

A. R3(config)#time-range WEEKEND

R3(config-time-range)#periodic Saturday Sunday 00:00 to 23:59

R3(config)#access-list 150 deny tcp host 10.3.3.3 host 10.2.2.2 eq 23 time-range WEEKEND

R3(config)#access-list 150 permit ip any any time-range WEEKEND

R3(config)#interface Gi0/1

R3(config-if)#ip access-group 150 out

B. R1(config)#time-range WEEKEND

R1(config-time-range)#periodic Friday Sunday 00:00 to 00:00

R1(config)#access-list 150 deny tcp host 10.3.3.3 host 10.2.2.2 eq 23 time-range WEEKEND

R1(config)#access-list 150 permit ip any any

R1(config)#interface Gi0/1

R1(config-if)#ip access-group 150 in

C. R1(config)#time-range WEEKEND

R1(config-time-range)#periodic weekend 00:00 to 23:59

R1(config)#access-list 150 deny tcp host 10.3.3.3 host 10.2.2.2 eq 23 time-range WEEKEND

R1(config)#access-list 150 permit ip any any

R1(config)#interface Gi0/1

R1(config-if)#ip access-group 150 in

D. R3(config)#time-range WEEKEND

R3(config-time-range)#periodic weekend 00:00 to 23:59

R3(config)#access-list 150 deny tcp host 10.3.3.3 host 10.2.2.2 eq 23 time-range WEEKEND

R3(config)#access-list 150 permit ip any any time-range WEEKEND

R3(config)#interface Gi0/1

R3(config-if)#ip access-group 150 out

Correct Answer: C

QUESTION 79

Drag and drop the REST API authentication method from the left to the description on the right

HTTP basic authentication	public API resource
OAuth	username and password in an encoded string
secure vault	authorization through identity provider

Correct Answer:

secure vault
HTTP basic authentication
OAuth

QUESTION 80

An engineer has deployed a single Cisco 5520 WLC with a management IP address of 172.16.50.5/24. The engineer must register 50 new Cisco AIR-CAP2802I-E-K9 access points to the WLC using DHCP option 43. The access points are connected to a switch in VLAN 100 that uses the 172.16.100.0/24 subnet. The engineer has configured the DHCP scope on the switch as follows:

Network 172.16.100.0 255.255.255.0
Default Router 172.16.100.1
Option 43 Ascii 172.16.50.5

The access points are failing to join the wireless LAN controller. Which action resolves the issue?

- A. configure option 43 Hex F104.AC10.3205
- B. configure option 43 Hex F104.CA10.3205
- C. configure dns-server 172.16.50.5
- D. configure dns-server 172.16.100.1

Correct Answer: A

QUESTION 81

An engineer is concerned with the deployment of a new application that is sensitive to inter-packet delay variance. Which command configures the router to be the destination of jitter measurements?

- A. Router(config)# ip sla responder udp-connect 172.29.139.134 5000
- B. Router(config)# ip sla responder tcp-connect 172.29.139.134 5000
- C. Router(config)# ip sla responder udp-echo 172.29.139.134 5000
- D. Router(config)# ip sla responder tcp-echo 172.29.139.134 5000

Correct Answer: C

QUESTION 82

What is used to validate the authenticity of the client and is sent in HTTP requests as a JSON object?

- A. SSH
- B. HTTPS
- C. JWT
- D. TLS

Correct Answer: C

QUESTION 83

```
Person#1:
First Name is Johnny
Last Name is Table
Hobbies are:
• Running
• Video games

Person#2:
First Name is Billy
Last Name is Smith
Hobbies are:
• Napping
• Reading
```

Which JSON syntax is derived from this data?

- A. {„Person“: [{„First Name“: „Johnny“, „Last Name“: „Table“, „Hobbies“: [„Running“, „Video games“]}, {„First Name“: „Billy“, „Last Name“: „Smith“, „Hobbies“: [„Napping“, „Reading“]}}}
- B. [{„First Name“: „Johnny“, „Last Name“: „Table“, „Hobbies“: „Running“, „Hobbies“: „Video games“}, {„First Name“: „Billy“, „Last Name“: „Smith“, „Hobbies“: „Napping“, „Hobbies“: Reading“}]}
- C. {„Person“: [{„First Name“: „Johnny“, „Last Name“: „Table“, „Hobbies“: „Running“, „Video games“}, {„First Name“: „Billy“, „Last Name“: „Smith“, „Hobbies“: „Napping“, „Reading“}]}
- D. [{„First Name“: „Johnny“, „Last Name“: „Table“, „Hobbies“: [„Running“, „Video games“]}, {„First Name“: „Billy“, „Last Name“: „Smith“, „Hobbies“: [„Napping“, „Reading“]}}}

Correct Answer: A

QUESTION 84

Which exhibit displays a valid JSON file?

A.

```
{
  "hostname": "edge_router_1"
  "interfaces": [
    "GigabitEthernet1/1"
    "GigabitEthernet1/2"
    "GigabitEthernet1/3"
  ]
}
```

B.

```
{
  "hostname": "edge_router_1",
  "interfaces": {
    "GigabitEthernet1/1",
    "GigabitEthernet1/2",
    "GigabitEthernet1/3",
  },
}
```

C.

```
{
  "hostname": "edge_router_1"
  "interfaces": {
    "GigabitEthernet1/1"
    "GigabitEthernet1/2"
    "GigabitEthernet1/3"
  }
}
```

E.

```
{
  "hostname": "edge_router_1",
  "interfaces": [
    "GigabitEthernet1/1",
    "GigabitEthernet1/2",
    "GigabitEthernet1/3"
  ]
}
```

Correct Answer: D

WLANs > Edit 'Guest_Wireless'

General Security QoS Policy-Mapping Advanced

Layer 2 Layer 3 AAA Servers

Select AAA servers below to override use of default servers on this WLAN

Radius Servers

Radius Server Overwrite interface Enabled

Interface Priority WLAN

	Authentication Servers	Accounting Servers
Server 1	<input checked="" type="checkbox"/> Enabled	<input checked="" type="checkbox"/> Enabled
Server 2	None	None
Server 3	None	None
Server 4	None	None
Server 5	None	None
Server 6	None	None

Assuming the WLC's interfaces are not in the same subnet as the RADIUS server, which interface would the WLC use as the source for all RADIUS-related traffic?

- A. the interface specified on the WLAN configuration
- B. any interface configured on the WLC
- C. the controller management interface
- D. the controller virtual interface

Correct Answer: A

QUESTION 86

A customer has a pair of Cisco 5520 WLCs set up in an SSO cluster to manage all APs. Guest traffic is anchored to a Cisco 3504 WLC located in a DM2. Which action is needed to ensure that the EoIP tunnel remains in an UP state in the event of failover on the SSO cluster?

- A. Configure back-to-back connectivity on the RP ports
- B. Use the mobility MAC when the mobility peer is configured
- C. Enable default gateway reachability check
- D. Use the same mobility domain on all WLCs

Correct Answer: B

QUESTION 87

What is the role of the vsmart controller in a Cisco SD-WAN environment?

- A. IT performs authentication and authorization
- B. It manages the control plane.
- C. It is the centralized network management system.
- D. It manages the data plane.

Correct Answer: B

QUESTION 88

When configuration WPA2 Enterprise on a WLAN, which additional security component configuration is required?

- A. NTP server
- B. PKI server
- C. RADIUS server
- D. TACACS server

Correct Answer: C

QUESTION 89

```
Router#sh run | b vty
line vty 0 4
  session-timeout 30
  exec-timeout 120 0
  session-limit 30
  login local
line vty 5 15
  session-timeout 30
  exec-timeout 30 0
  session-limit 30
  login local
```

Security policy requires all idle-exec sessions to be terminated in 600 seconds. Which configuration achieves this goal?

- A. line vty 0 15
exec-timeout 10 0
- B. line vty 0 15
exec-timeout
- C. line vty 0 15
absolute-timeout 600
- D. line vty 0 4
exec-timeout 600

Correct Answer: A

QUESTION 90

In a Cisco SD-Access solution, what is the role of the Identity Services Engine?

- A. It provides GUI management and abstraction via apps that share context.
- B. It is leveraged for dynamic endpoint to group mapping and policy definition.
- C. It is used to analyze endpoint to app flows and monitor fabric status.
- D. It manages the LISP EID database.

Correct Answer: B

QUESTION 91

An engineer must configure a GRE tunnel interface in the default mode. The engineer has assigned an IPV4 address on the tunnel and sourced the tunnel from an Ethernet interface. Which additional configuration must be made on the tunnel interface?

- A. (config-if)# keepalive <seconds retries>
- B. (config-if)# ip mtu <value>
- C. (config-if)# ip tcp adjust-mss <value>
- D.(config-if)# tunnel destination <ip address>

Correct Answer: D

QUESTION 92

Drag and drop the threat defense solutions from the left onto their descriptions on the right

Umbrella	provides malware protection on endpoints
AMP4E	provides IPS/IDS capabilities
FTD	performs security analytics by collecting network flows
StealthWatch	protects against email threat vector
ESA	provides DNS protection

Correct Answer:

AMP4E
FTD
StealthWatch
ESA
Umbrella

QUESTION 93

A network administrator is implementing a routing configuration change and enables routing debugs to track routing behavior during the change. The logging output on the terminal is interrupting the command typing process. Which two actions can the network administrator take to minimize the possibility of typing commands incorrectly? (Choose two)

- A. Configure the logging synchronous global configuration command
- B. Configure the logging delimiter feature
- C. Configure the logging synchronous command under the vty
- D. Press the TAB key to reprint the command in a new line
- E. Increase the number of lines on the screen using the terminal length command

Correct Answer: CD

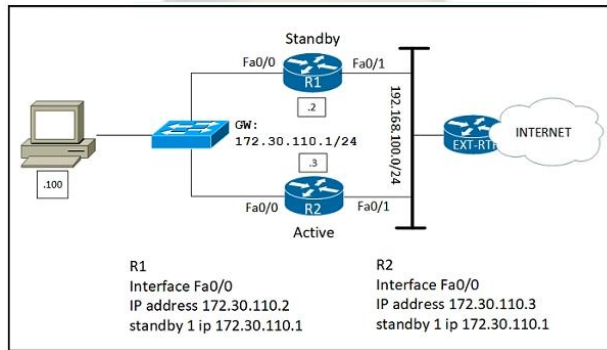
QUESTION 94

Drag and drop the QoS mechanisms from the left to the correct descriptions on the right.

CoS	tool to enforce rate-limiting on ingress/egress
shaping	bandwidth management technique which delays datagrams
policing	portion of the 802.1Q header used to classify packets

Correct Answer:

policing
shaping
CoS



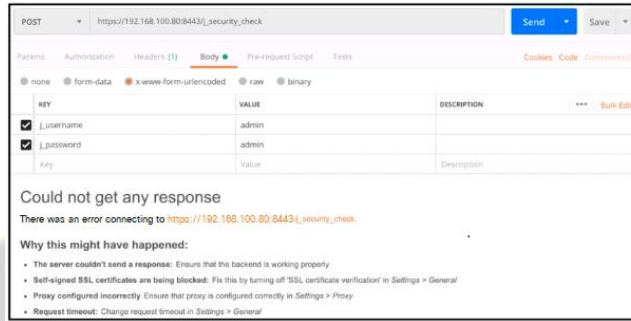
Which configuration change ensures that R1 is the active gateway whenever it is in a functional state for the 172.30.110.0/24 network?

- A. R1
standby 1 preempt
R2
standby 1 priority 90
- B. R1
standby 1 preempt
R2
standby 1 priority 100
- C. R2
standby 1 priority 100
standby 1 preempt
- D. R2
standby 1 priority 110
standby 1 preempt

Correct Answer: A

```
vedge-001# show control connections
```

GROUP	TYPE	PROT	SYSTEM IP	ID	ID	PRIVATE IP	LOCAL	COLOR	PROXY	STATE	UPTIME	PORT
PUBLIC IP					PORT							ID
vsmart	dtls	4.4.4.70		100	1	192.168.100.80				No	up	
12446	10.10.20.70					12446	default					
0:02:24:09	0											
vbond	dtls	0.0.0.0		0	0	192.168.100.81				-	up	
12346	10.10.20.80					12346	default					
0:02:24:10	0											
vmanage	dtls	4.4.4.90		100	0	192.168.100.82						
12446	10.10.20.90					12446	default					



What step resolves the authentication issue?

- A. restart the vsmart host
- B. target 192.168.100.82 in the URI
- C. change the port to 12446
- D. use basic authentication

Correct Answer: B

QUESTION 97

An engineer is describing QoS to a client. Which two facts apply to traffic policing? (Choose two)

- A. Policing adapts to network congestion by queuing excess traffic
- B. Policing should be performed as close to the destination as possible
- C. Policing drops traffic that exceeds the defined rate
- D. Policing typically delays the traffic, rather than drops it
- E. Policing should be performed as close to the source as possible

Correct Answer: CE

QUESTION 98

What is the function of the fabric control plane node in a Cisco SD-Access deployment?

- A. It is responsible for policy application and network segmentation in the fabric.
- B. It performs traffic encapsulation and security profiles enforcement in the fabric.
- C. It holds a comprehensive database that tracks endpoints and networks in the fabric.
- D. It provides integration with legacy nonfabric-enabled environments.

Correct Answer: C

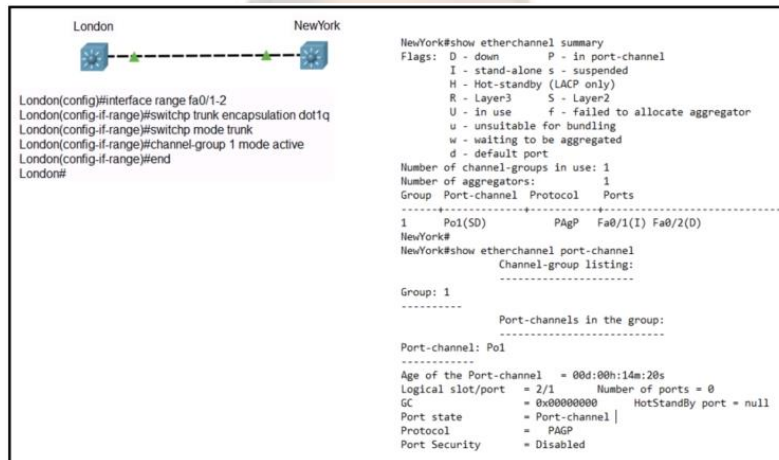
QUESTION 99

Drag and drop the characteristics from the left onto the correct infrastructure deployment types on the right.

significant initial investment but lower reoccurring costs	On-premises
pay-as-you-go model	
physical location of data can be defined in contract with provider	
very scalable and fast delivery of changes in scale	Cloud
company has control over the physical security of equipment	

Correct Answer:

On-premises
significant initial investment but lower reoccurring costs
company has control over the physical security of equipment
Cloud
pay-as-you-go model
very scalable and fast delivery of changes in scale
physical location of data can be defined in contract with provider



```
London
London(config)#interface range fa0/1-2
London(config-if-range)#switchp trunk encapsulation dot1q
London(config-if-range)#switchp mode trunk
London(config-if-range)#channel-group 1 mode active
London(config-if-range)#end
London#

NewYork
NewYork#show etherchannel summary
Flags: D - down P - in port-channel
I - stand-alone s - suspended
H - Hot-standby (LACP only)
R - Layer3 S - Layer2
U - in use f - failed to allocate aggregator
u - unsuitable for bundling
w - waiting to be aggregated
d - default port
Number of channel-groups in use: 1
Number of aggregators: 1
Group Port-channel Protocol Ports
-----
1 Po1(SD) PAgP Fa0/1(1) Fa0/2(D)
NewYork#
NewYork#show etherchannel port-channel
Channel-group listing:
Group: 1
-----
Port-channels in the group:
Port-channel: Po1
-----
Age of the Port-channel = 00d:00h:14m:20s
Logical slot/port = 2/1 Number of ports = 0
GC = 8x00000000 HotStandBy port = null
Port state = Port-channel |
Protocol = PAGP
Port Security = Disabled
```

Refer to the exhibit. Communication between London and New York is down. Which command set must be applied to resolve this issue?

- A.

```
NewYork(config)#no interface po1
NewYork(config)#interface range fa0/1-2
NewYork(config-if)#channel-group 1 mode negotiate
NewYork(config-if)#end
NewYork#
```
- B.

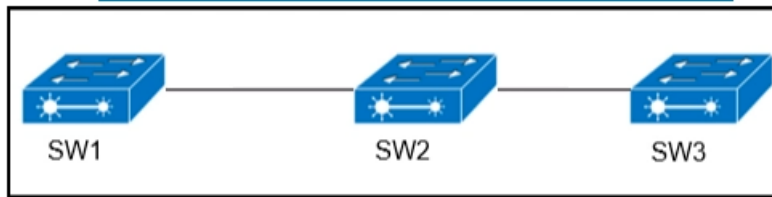
```
NewYork(config)#no interface po1
NewYork(config)#interface range fa0/1-2
NewYork(config-if)#channel-group 1 mode auto
NewYork(config-if)#end
NewYork#
```
- C.

```
NewYork(config)#no interface po1
NewYork(config)#interface range fa0/1-2
NewYork(config-if)#channel-group 1 mode on
NewYork(config-if)#end
NewYork#
```
- D.

```
NewYork(config)#no interface po1
NewYork(config)#interface range fa0/1-2
NewYork(config-if)#channel-group 1 mode passive
NewYork(config-if)#end
NewYork#
```

Correct Answer: D

QUESTION 101



Refer to exhibit. VLANs 50 and 60 exist on the trunk links between all switches. All access ports on SW3 are configured for VLAN 50 and SW1 is the VTP server. Which command ensures that SW3 receives frames only from VLAN 50?

- A. SW1 (config)#vtp pruning
- B. SW3(config)#vtp mode transparent
- C. SW2(config)#vtp pruning
- D. SW1(config)>vtp mode transparent

Correct Answer: A

QUESTION 102

Which algorithms are used to secure REST API from brute attacks and minimize the impact?

- A. SHA-512 and SHA-384
- B. MD5 algorithm-128 and SHA-384
- C. SHA-1, SHA-256, and SHA-512
- D. PBKDF2, BCrypt, and SCrypt

Correct Answer: D

PHONE WITH WHATS APP

+201116860484

FACEBOOK ACCOUNT

<https://www.facebook.com/3RAB.EL.IT>

جروب تليجرام

[https://t.me/PASS WITH ME](https://t.me/PASS_WITH_ME)

متاح جميع الفوتشرات و الدمبات و مساعده نجاح فى جميع الاختبارات
الدوليه بدون دمب ضمان نجاح 200% فى نفس اليوم

#وائل_الزواوى ❤️

#عرب_ال_IT 🎓