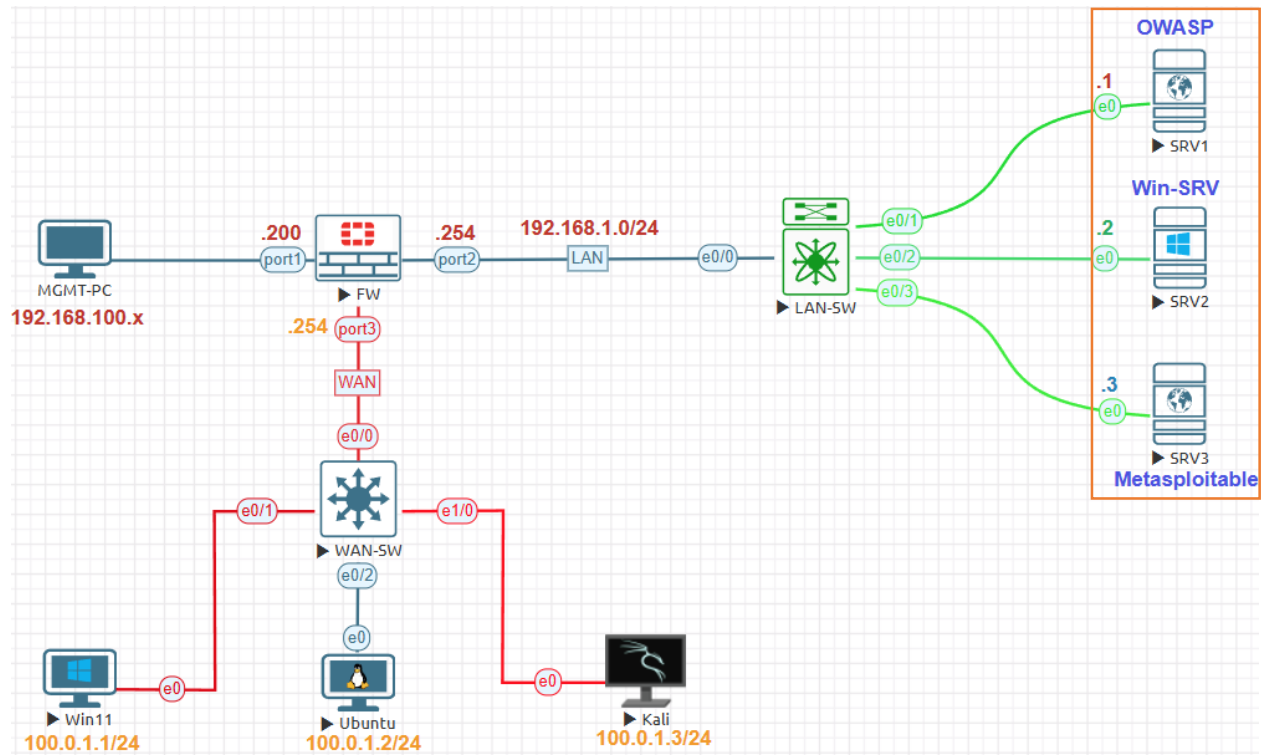


Servers Configuration Lab:



Management Subnet	192.168.100.0/24
FortiGate Management IP	192.168.100.200
Internal Servers Subnet	192.168.1.0/24
FortiGate Firewall External	100.0.1.0/24
FortiGate Firewall Internal IP	192.168.1.254
FortiGate Firewall External IP	100.0.1.254
SRV1 IP Address	192.168.1.1
SRV2 IP Address	192.168.1.2
SRV3 IP Address	192.168.1.3
External Win11 IP Address	100.0.1.1
External Ubuntu IP Address	100.0.1.2
External Kali IP Address	100.0.1.3

Devices	Username	Password
Linux Metasploitable 2.0	msfadmin	msfadmin
Linux-OWASP Top 10	root	owaspbwa
Windows Server 2019	Administrator	Test123

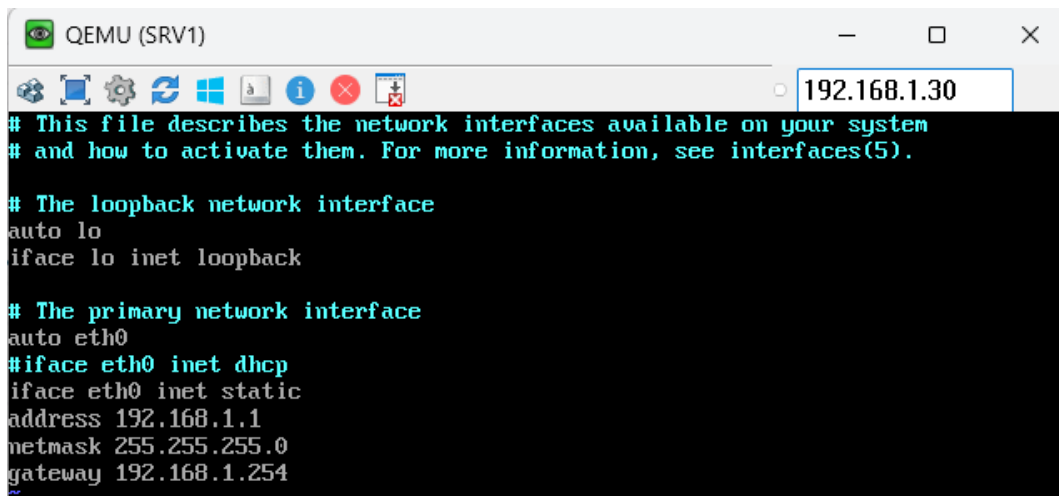
Server 1 OWSAP:

SRV1 IP Address Configuration

```
vi /etc/network/interfaces
# iface eth0 inet dhcp
iface eth0 inet static

address 192.168.1.1
netmask 255.255.255.0
gateway 192.168.1.254

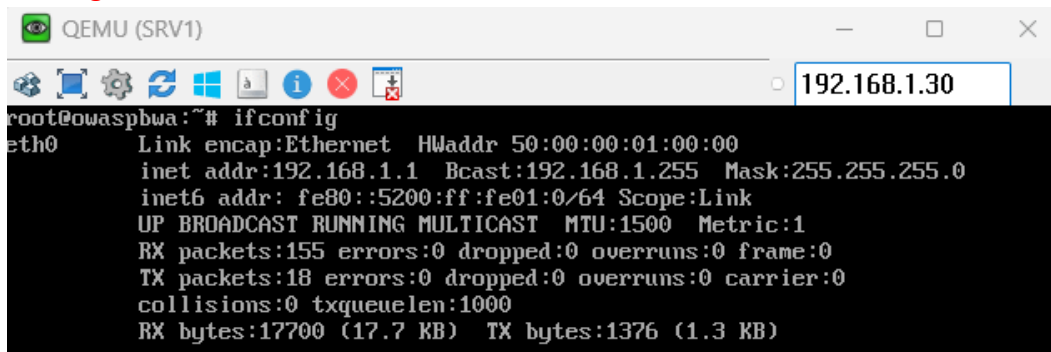
esc
:wq
```



The screenshot shows a QEMU terminal window titled "QEMU (SRV1)". The terminal displays the contents of the /etc/network/interfaces file, which has been edited to configure the primary network interface (eth0) with a static IP address of 192.168.1.1, a netmask of 255.255.255.0, and a gateway of 192.168.1.254. The terminal also shows the configuration for the loopback interface (lo) and the primary network interface (eth0). The IP address 192.168.1.30 is visible in the terminal's title bar.

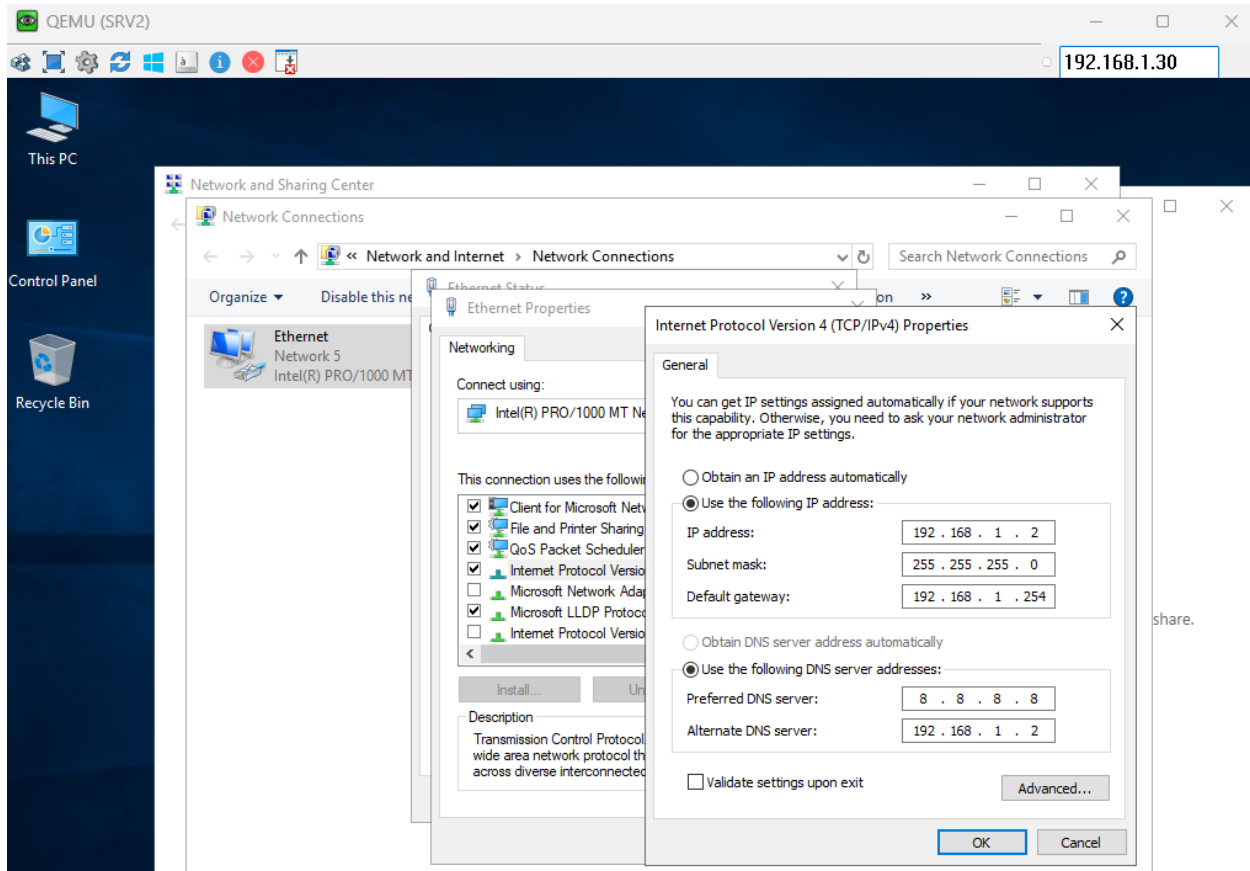
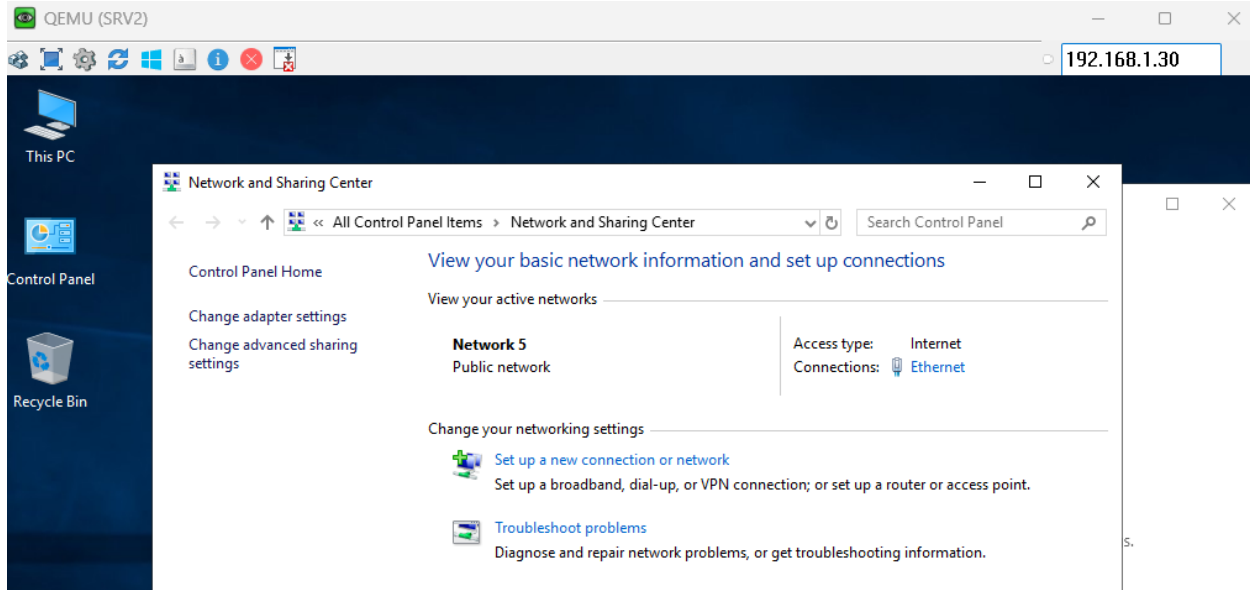
Reboot to apply the configuration after restart login with username/password **root/owaspbwa**
Type below command to verify the IP Address:

ifconfig



The screenshot shows a QEMU terminal window titled "QEMU (SRV1)". The terminal displays the output of the ifconfig command, which shows the configuration for the eth0 interface. The output includes the link encapsulation (Ethernet), hardware address (50:00:00:01:00:00), IP address (192.168.1.1), broadcast address (192.168.1.255), netmask (255.255.255.0), and other network statistics. The IP address 192.168.1.30 is visible in the terminal's title bar.

Server 2 Windows Server 2019:



Server 3 Metasploitable 2:

Login to the system username/password **msfadmin/msfadmin**

Sudo su

Type password **msfadmin**

```
To access official Ubuntu documentation, please visit:
http://help.ubuntu.com/
No mail.
msfadmin@metasploitable:~$ sudo su
[sudo] password for msfadmin:
root@metasploitable:~/home/msfadmin# _
```

SRV3 IP Address Configuration

```
vi /etc/network/interfaces
```

```
# iface eth0 inet dhcp
```

```
Press o (Next Line)
```

```
iface eth0 inet static
```

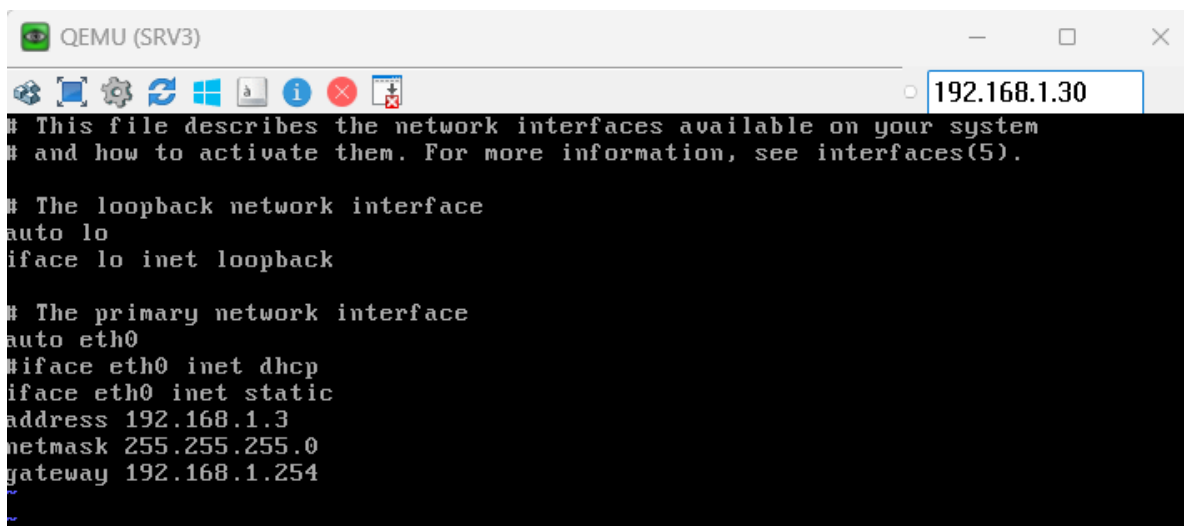
```
address 192.168.1.3
```

```
netmask 255.255.255.0
```

```
gateway 192.168.1.254
```

```
esc
```

```
:wq
```



```
QEMU (SRV3)
# This file describes the network interfaces available on your system
# and how to activate them. For more information, see interfaces(5).

# The loopback network interface
auto lo
iface lo inet loopback

# The primary network interface
auto eth0
#iface eth0 inet dhcp
iface eth0 inet static
address 192.168.1.3
netmask 255.255.255.0
gateway 192.168.1.254
~
~
```