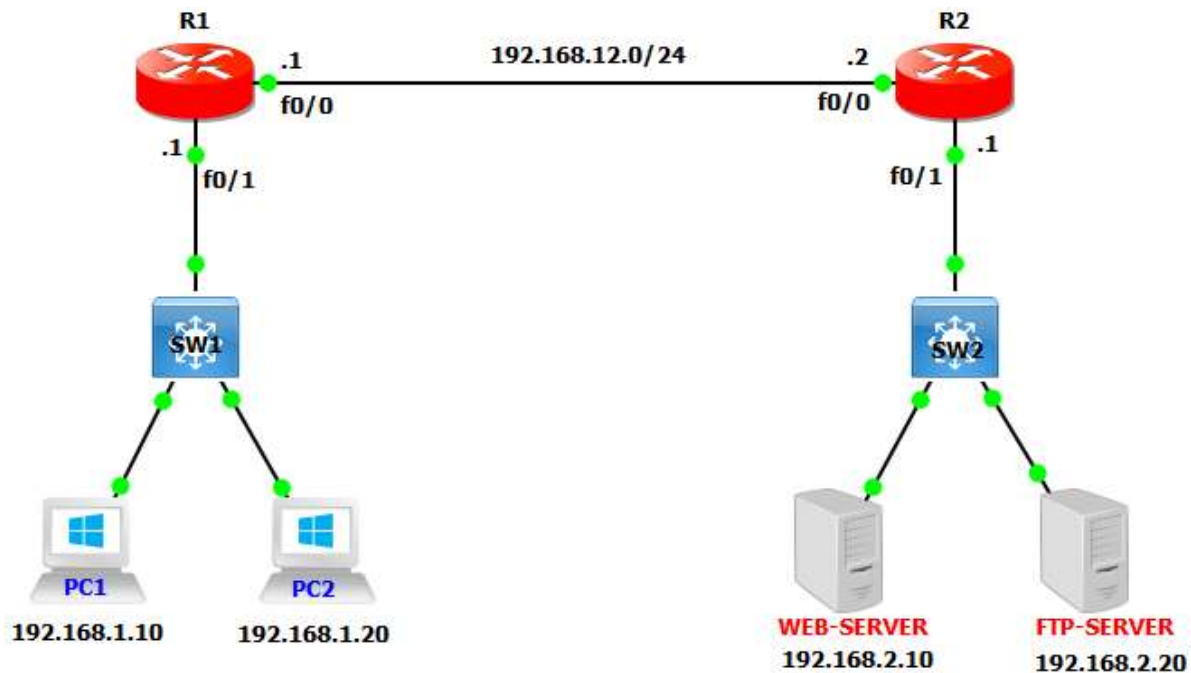


## Standard ACLs:

- o Standard ACLs filter the packet based on its source IP address.
- o Standard ACLs should be placed as close to destination devices as possible.
- o Number of Standard Access Control List (ACL) is start from 1 and end 99.
- o Standard Access Control List (ACL) is Old type of Access Control List (ACL).
- o Standard Access Control List (ACLs) are mainly used for normal filtering.



R1 Configuration	
R1(config)#interface f0/0	R1(config)#int f0/1
R1(config-if)#ip add 192.168.12.1	R1(config-if)#ip add 192.168.1.1
255.255.255.0	255.255.255.0
R1(config-if)#no shutdown	R1(config-if)#no shutdown
R1(config)#ip route 0.0.0.0 0.0.0.0 192.168.12.2	
R2 Configuration	
R2(config)#interface f0/0	R2(config)#inter f0/1
R2(config-if)#ip add 192.168.12.2	R2(config-if)#ip add 192.168.2.1
255.255.255.0	255.255.255.0
R2(config-if)#no shutdown	R2(config-if)#no shutdown
R2(config)#ip route 0.0.0.0 0.0.0.0 192.168.12.1	

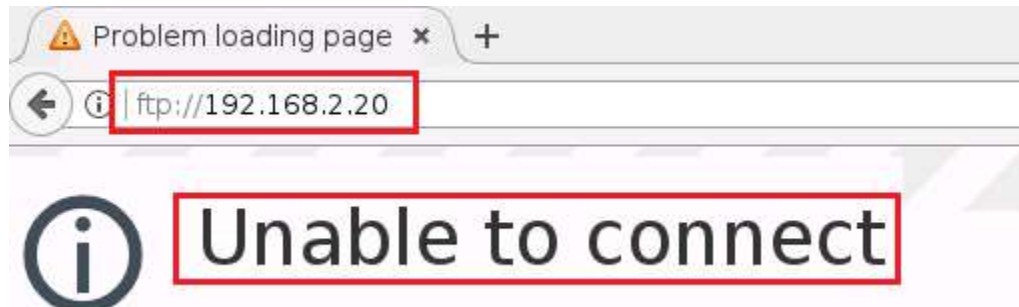
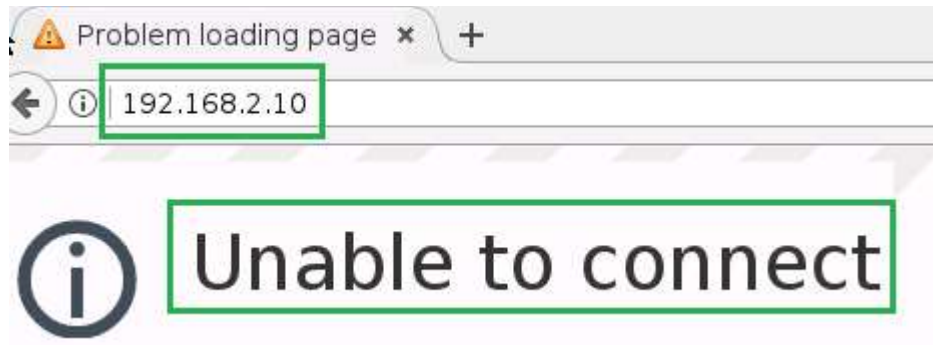
### Standard ACL on R2 to deny PC1

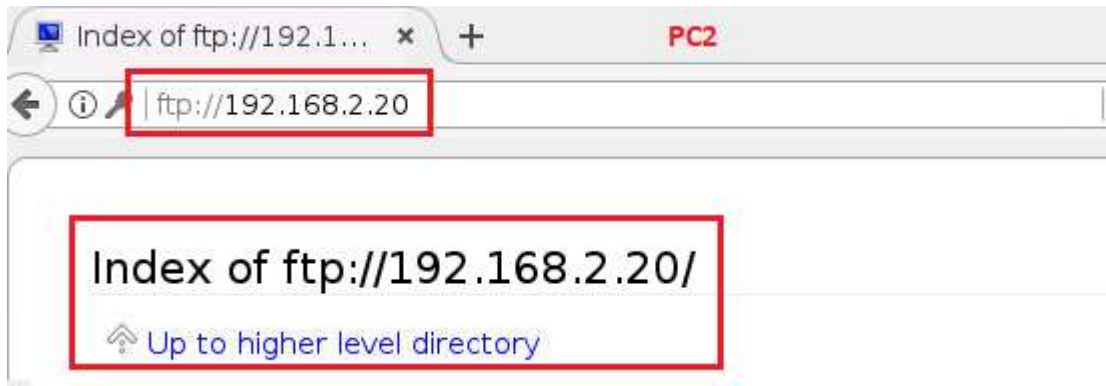
```
R2(config)#access-list 1 deny host 192.168.1.10
```

```
R2(config)#access-list 1 permit any
```

```
R2(config-if)#ip access-group 1 out
```

```
R2#show access-lists
Standard IP access list 1
 10 deny 192.168.1.10 (18 matches)
 20 permit any
```





### Standard ACL on R2 to deny Whole Network

```
R2(config)#access-list 11 deny 192.168.1.0 0.0.0.255
```

```
R2(config)#access-list 11 permit any
```

```
R2(config-if)#ip access-group 11 out
```

```
Standard IP access list 11  
10 deny 192.168.1.0, wildcard bits 0.0.0.255 (34 matches)  
20 permit any
```

```
root@PC1:~# ping 192.168.2.10  
PING 192.168.2.10 (192.168.2.10): 56 data bytes  
36 bytes from 192.168.12.2: Packet Filtered  
36 bytes from 192.168.12.2: Packet Filtered  
36 bytes from 192.168.12.2: Packet Filtered  
^C--- 192.168.2.10 ping statistics ---
```

```
root@PC2:~# ping 192.168.2.10  
PING 192.168.2.10 (192.168.2.10): 56 data bytes  
36 bytes from 192.168.12.2: Packet Filtered  
36 bytes from 192.168.12.2: Packet Filtered  
36 bytes from 192.168.12.2: Packet Filtered  
^C--- 192.168.2.10 ping statistics ---
```