



Unified Computing System (UCS) Overview

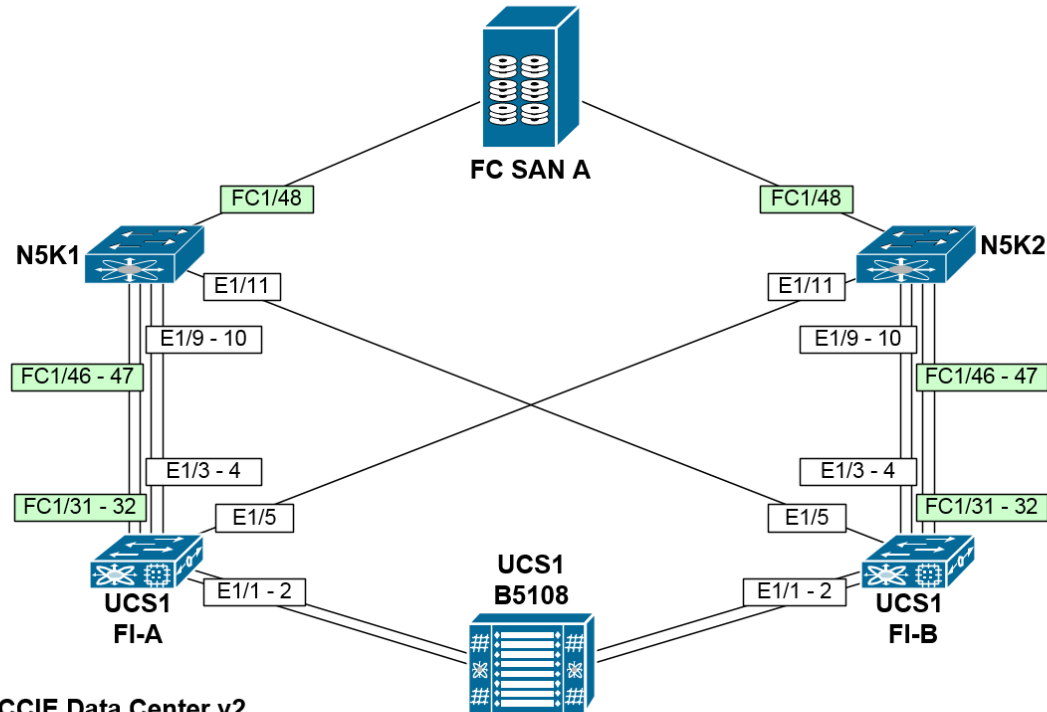


<https://t.me/learningnets>

Course Topic Flow

- ▷ UCS System Components Overview
- ▷ UCS Basic System Initialization
- ▷ Using the UCS Manager (UCSM)
- ▷ Using the UCS CLI
- ▷ UCS LAN Connectivity
- ▷ UCS SAN Connectivity
- ▷ UCS Pool, Policies, & Service Profiles

Hardware Topology – UCS B Series

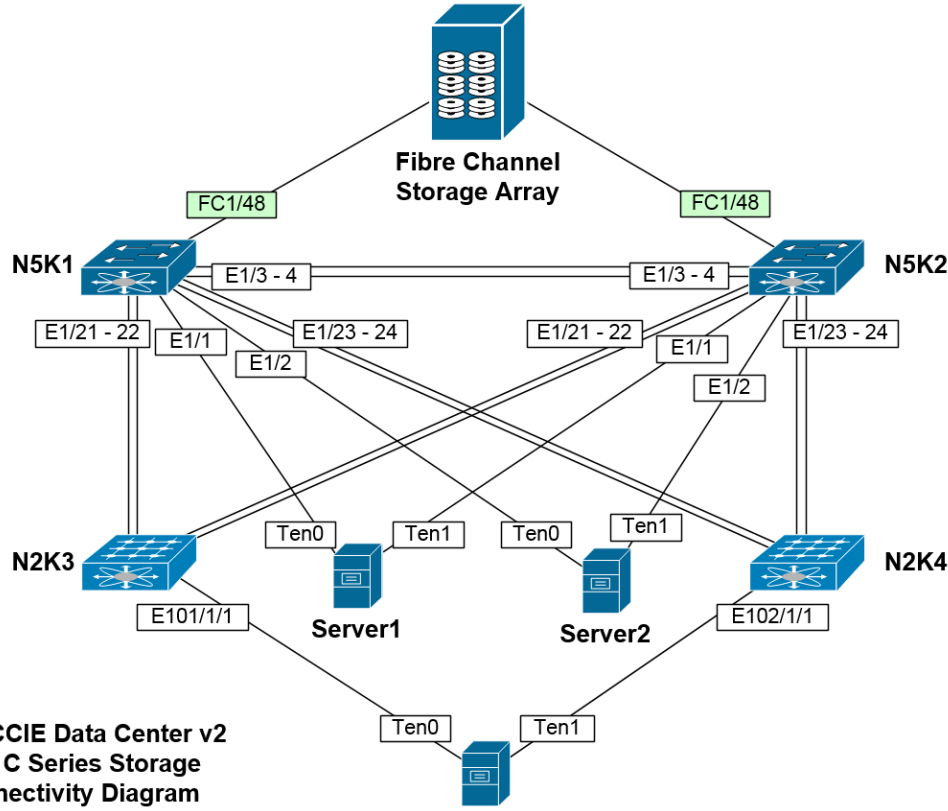


INE's CCIE Data Center v2
UCS B Series Storage
Connectivity Diagram
© INE Inc.

<https://t.me/learningnets>



Hardware Topology – UCS C Series



INE's CCIE Data Center v2
UCS C Series Storage
Connectivity Diagram
© INE Inc.

<https://t.me/learningnets>



Recommended Resources

▷ Books

- [Cisco Unified Computing System \(UCS\) \(Data Center\): A Complete Reference Guide to the Cisco Data Center Virtualization Server Architecture](#)
- [Data Center Virtualization Fundamentals: Understanding Techniques and Designs for Highly Efficient Data Centers with Cisco Nexus, UCS, MDS, and Beyond](#)
- [NX-OS and Cisco Nexus Switching: Next-Generation Data Center Architectures](#)
- [Implementing Cisco UCS Solutions](#)

▷ Documentation

- [Unified Computing System Technology Design Guide](#)

▷ Cisco Live

- [BRKCOM-2003 - UCS Networking - Deep Dive](#)

Q&A

<https://t.me/learningnets>



UCS Blade Server Components



<https://t.me/learningnets>

UCS High Level Components

▷ <http://www.cisco.com/go/ucs>

▷ UCS Blade Series is made up of five main components:

- Blade Chassis
- Blade Servers
- Blade Server I/O Adapters
- Blade Chassis I/O Modules
- Fabric Interconnects

UCS High Level Components

▷ Blade Chassis

- Physical enclosure for Servers
- Includes hot swappable power supplies and fans

▷ Blade Servers

- Physical Servers that include CPU, RAM, & Optional HDDs

▷ Adapters

- Network Interface Cards for Blade Servers
- AKA “mezzanine adapters”, “virtual interface cards” (VICs)

UCS High Level Components

▷ I/O Module

- AKA IOM, “Fabric Extender” (FEX)
- Physical module to connect backplane of chassis/servers to upstream Fabric Interconnects
- This is where the Chassis is physically wired to the network

▷ Fabric Interconnects

- AKA “UCS FI”
- Hosts the management, control, and data planes for Chassis and Servers
- Servers cannot operate without the FI(s)
- Deployed in pairs for redundancy

Q&A

<https://t.me/learningnets>