



**Networkforyou**

Subscribe to our  
**YouTube Channel**



**Networkforyou**



**Welcome  
To  
Network for you  
Benefits & Limitations  
Of  
SDWAN**



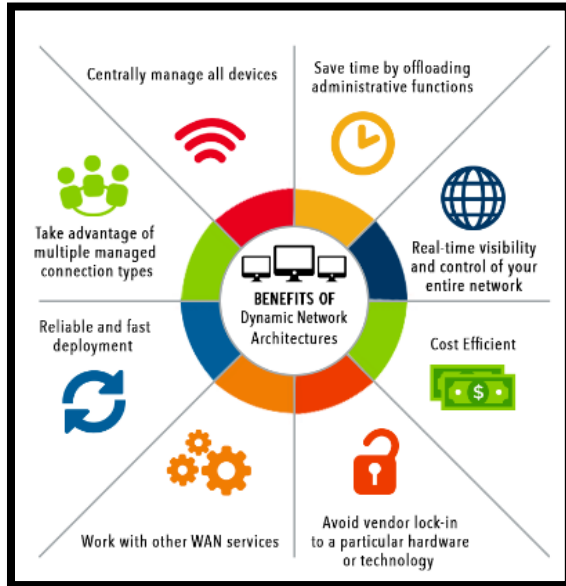
Email us:  
[networkforyou4@gmail.com](mailto:networkforyou4@gmail.com)

1 of 4

WhatsApp Us : +918143809578



## Benefits of SD-WAN:



### **Challenges of the old WAN model:**

- High prices for dedicated/MPLS links
- Technical team on site
- Difficult to manage many remote sites
- Slow to deploy new services/features
- Links are not efficient for today's apps

### **Benefits of SD-WAN:**

- Simple
- Easy to manage
- Secure
- Scalable
- Efficient
- Low cost
- Zero-touch Provision

Email us:  
[networkforyou4@gmail.com](mailto:networkforyou4@gmail.com)

WhatsApp Us : +918143809578



**Improved performance:** SD-WAN can improve the performance of WAN networks by optimizing traffic flows and avoiding congested links. This can be done by using a variety of techniques, such as path selection, traffic shaping, and quality of service (QoS).

**Reduced costs:** SD-WAN can reduce the costs of WAN networks by eliminating the need for expensive MPLS links. MPLS links are typically used for mission-critical applications, such as voice and video. However, they can be expensive, especially for remote sites. SD-WAN can use a variety of links, such as broadband Internet, to connect remote sites. This can save money, especially for sites that do not need the high performance of MPLS links.

**Increased agility:** SD-WAN can increase the agility of WAN networks by making it easier to add or remove links and change routing policies. This can be done by using a centralized management platform. With a centralized management platform, changes can be made to the network without having to make changes to individual devices. This can be helpful for organizations that need to be able to quickly adapt to changes in their business needs.

**Improved security:** SD-WAN can improve the security of WAN networks by providing centralized control over routing and security policies. This can be done by using a security appliance that is located in the cloud. With a security appliance in the cloud, security policies can be applied to all traffic that flows through the network. This can help to protect the network from a variety of threats, such as malware and data breaches.

### **Limitations of SD-WAN:**

**Complexity:** SD-WAN can be complex to deploy and manage, especially for large networks. This is because SD-WAN typically use a variety of different technologies, such as routing, switching, and security. It can be difficult to integrate these technologies and make sure that they are all working together properly.

**Vendor lock-in:** Some SD-WAN vendors lock their customers into their own hardware and software, which can make it difficult to switch vendors if needed. It is important to choose an SD-WAN vendor that offers a flexible architecture that can be easily integrated with other technologies.

**Heterogeneity:** SD-WAN networks often consist of a heterogeneous mix of devices, which can make it difficult to manage and troubleshoot. This can make it difficult to manage and troubleshoot the network. It is important to choose an SD-WAN vendor that offers a centralized management platform that can be used to manage all devices in the network.

**Email us:**  
[networkforyou4@gmail.com](mailto:networkforyou4@gmail.com)

3 of 4

**WhatsApp Us : +918143809578**



**Networkforyou**

Subscribe to our  
**You Tube Channel**

Overall, SD-WAN can be a valuable tool for improving the performance, reducing the costs, increasing the agility, and improving the security of WAN networks. However, it is important to be aware of the potential complexity, vendor lock-in, and heterogeneity challenges before deploying SD-WAN.

Networkforyou

**Email us:**  
**networkforyou4@gmail.com**

4 of 4

**WhatsApp Us : +918143809578**