

# Windows Server 2022: Migrate Servers and Workloads

---

## Migrate On-Premises Storage on Windows Server



**Tim Warner**

Microsoft Azure Solutions Architect

@TechTrainerTim   TechTrainerTim.com



# Overview



**Use Storage Migration Service**

**Cut over to a new server**

**Migrate to Azure Virtual Machines**

**Migrate data to Azure file shares**



# Windows Server 2022: Migrate Servers and Workloads

**Migrate On-Premises Storage on Windows Server**

**Migrate On-Premises Servers to Azure**

**Migrate Workloads to Windows Server 2022**

**Migrate IIS Workloads to Azure**

**Migrate an AD DS Infrastructure to Windows Server 2022 AD DS**



# Windows Server Hybrid Administrator Associate

Take two exams



CERTIFICATION EXAM **AZ-800**  
**Administering Windows Server  
Hybrid Core Infrastructure**

AND



CERTIFICATION EXAM **AZ-801**  
**Configuring Windows Server  
Hybrid Advanced Services**

Earn the certification




ASSOCIATE CERTIFICATION  
**Microsoft Certified:  
Windows Server Hybrid  
Administrator Associate**

**One-year cert validity**



# Exercise Files



What do you want to learn?

Timothy  
timothywarner316@gmail.com

## Troubleshooting with Microsoft Azure Network Watcher

by Tim Warner

Microsoft now gives you packet-level access to your Windows Server and Linux virtual machines (VMs) running in Azure. You'll learn how to use Network Watcher to troubleshoot network security groups (NSGs), perform packet captures, and much more.

[Resume Course](#) [Bookmark](#) [Add to Channel](#)

Table of contents

Description

Transcript

**Exercise files**

Discussion


Learning Check

Recommended

These exercise files are intended to provide you with the assets you need to create a video-based hands-on experience. With the exercise files, you can follow along with the author and re-create the same solution on your computer. We find this to be even more effective than written lab exercises.

[Download exercise files](#)

Course author

 **Tim Warner**

Timothy Warner is a Microsoft Most Valuable Professional (MVP) in Cloud and Datacenter Management who is based in Nashville, TN.

Course info

Level	Intermediate
Rating	★★★★★
My rating	★★★★★
Duration	2h 12m
Released	31 Oct 2017

Share course

[f](#) [t](#) [g+](#) [in](#)



# Exercise Files

The screenshot displays a Windows desktop environment with three overlapping windows:

- File Explorer:** Located on the left, it shows the path `C:\Users\Tim\Downloads\azure`. The file list contains folders named 02, 03, 04, 05, and 06. Folder 02 is selected. The status bar at the bottom indicates "0 / 5 object(s) selected".
- Code Editor:** The central window is titled `microsoft-azure-ad-privileged-identity-management-configuring-m4-links.txt`. It displays a list of 22 lines of text, which are links to various Azure documentation pages. The text is as follows:

```
1 Module 4: Organize and Perform Azure AD PIM Access Reviews↵
2 ↵
3 Microsoft Azure↵
4 https://azure.microsoft.com/en-us/↵
5 ↵
6 Azure Documentation↵
7 https://docs.microsoft.com/en-us/azure/↵
8 ↵
9 Azure AD Privileged Identity Management (PIM) documentation | Microsoft Docs↵
10 https://docs.microsoft.com/en-us/azure/active-directory/
privileged-identity-management/↵
11 ↵
12 Identity Governance - Azure Active Directory | Microsoft Docs↵
13 https://docs.microsoft.com/en-us/azure/active-directory/governance/
identity-governance-overview↵
14 ↵
15 Create an access review of Azure resource roles in PIM - Azure Active Directory |
Microsoft Docs↵
16 https://docs.microsoft.com/en-us/azure/active-directory/
privileged-identity-management/pim-resource-roles-start-access-review↵
17 ↵
18 Review access to Azure AD roles in PIM - Azure Active Directory | Microsoft Docs↵
19 https://docs.microsoft.com/en-us/azure/active-directory/
privileged-identity-management/pim-how-to-perform-security-review↵
20 ↵
21 View audit history for Azure AD roles in PIM - Azure Active Directory | Microsoft
Docs↵
22 https://docs.microsoft.com/en-us/azure/active-directory/
privileged-identity-management/pim-how-to-use-audit-log↵
```
- File Details Window:** A small window on the right shows details for the selected folder 02. It lists the path `02\demos\` and shows a table with file sizes and package counts.

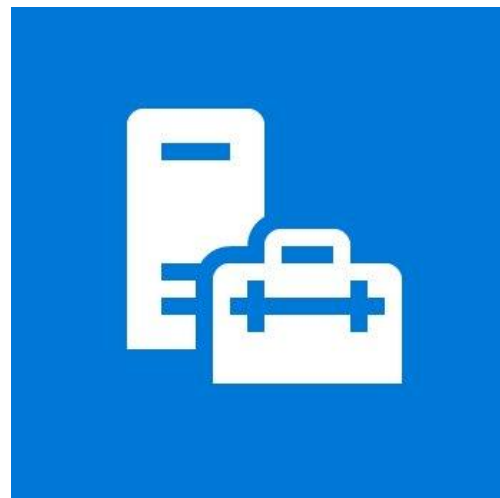
The code editor's status bar at the bottom indicates "Spaces: 4", "UTF-8", "CRLF", and "Plain Text".



# Storage Migration Service



# Storage Migration Service



**Rapidly migrate files, file shares, and configurations (DACLS, for instance) from a source server to:**

- Newer server on-premises
- Azure VM

**Supports Windows (in and out of clusters) and Linux**

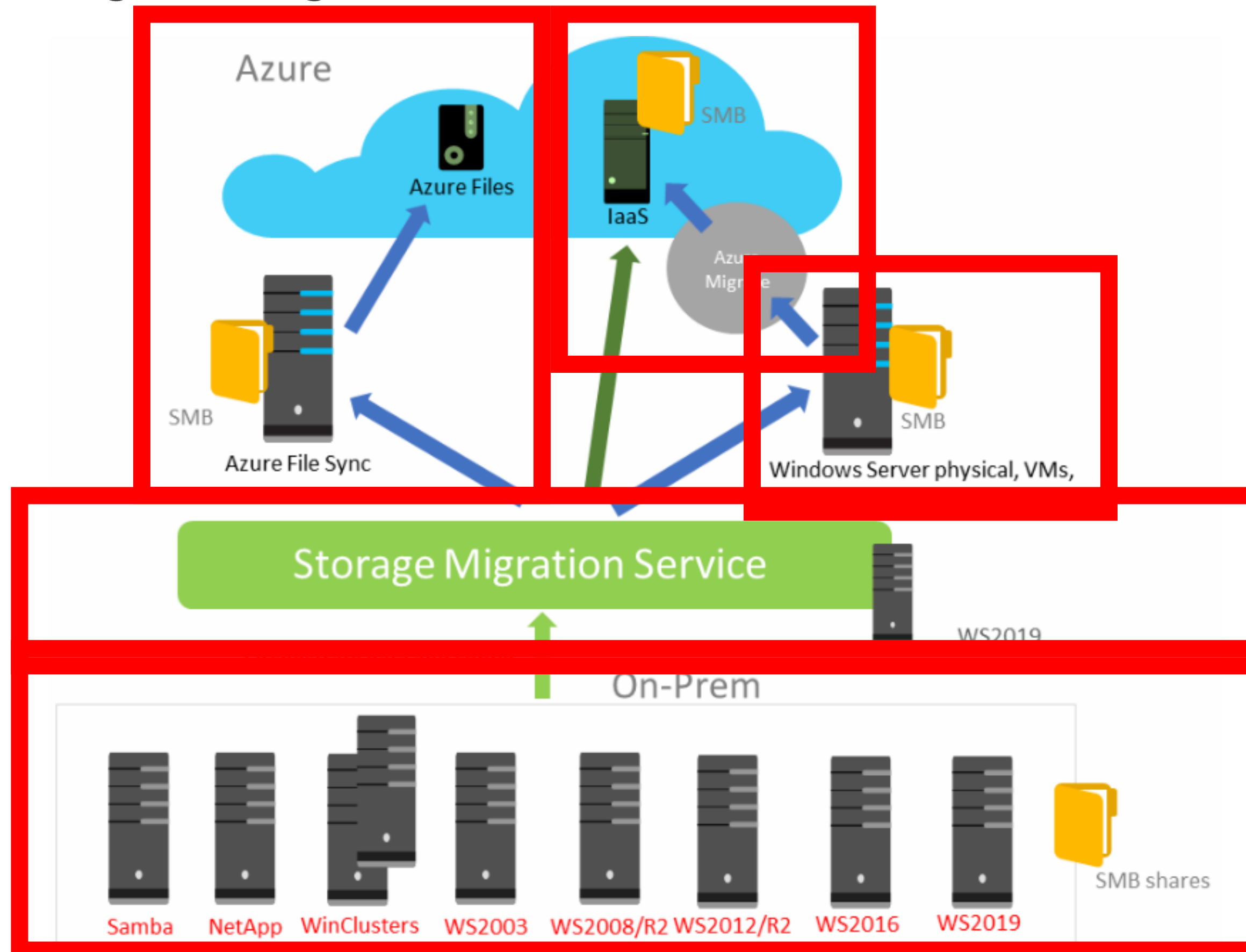
**Orchestrator server performs inventory**

**Windows Admin Center provides UI**

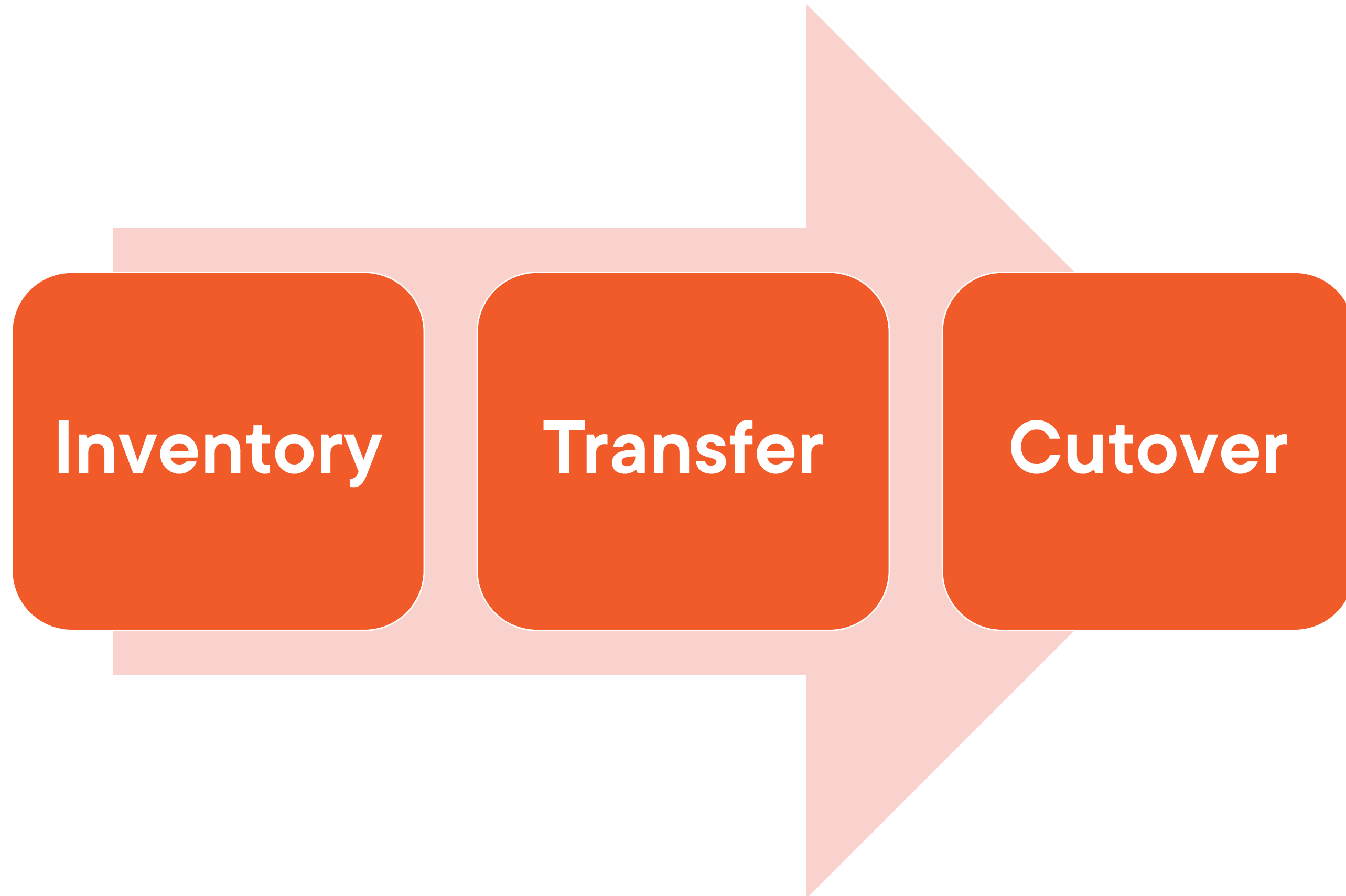
**"Steal the identity of the source machine"**



# Storage Migration Service Architecture



# Storage Migration Service Workflow



# Migration to Azure File Shares



# Azure File Sync



**Azure service that can centralize your local file shares into Azure Files**

**Multi-site access and sync**

- No changes to client applications

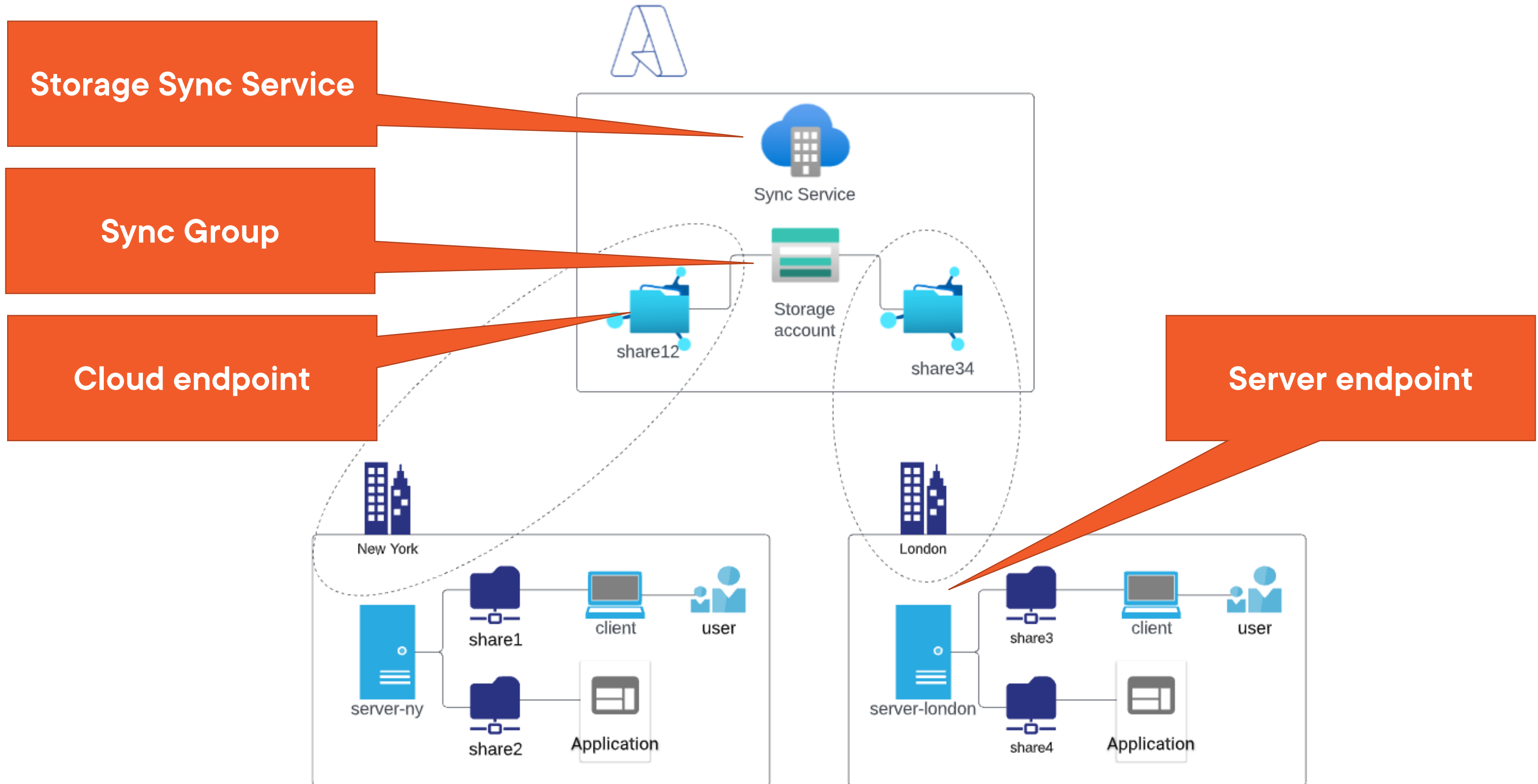
**Business continuity/disaster recovery**

**Cloud tiering**

**Cloud backup**



# Azure File Sync Architecture



# Demo



1

**Migrate a file server on prem**

**Set up AFS**



## Summary



**Azure File Sync has quite a few novel use cases**

- Azure Cloud Shell

**Azure Recovery Services vault can protect Azure file shares**

**Lead: What does Microsoft recommend with regard to migrating entire local VMs to Azure?**



Up Next:

Migrate On-Premises Servers to Azure

---

