

Going Deeper on the Tower Components



Matt Conran

THE NETWORK ARCHITECT

@networkinsightM www.network-insight.net



Module Overview



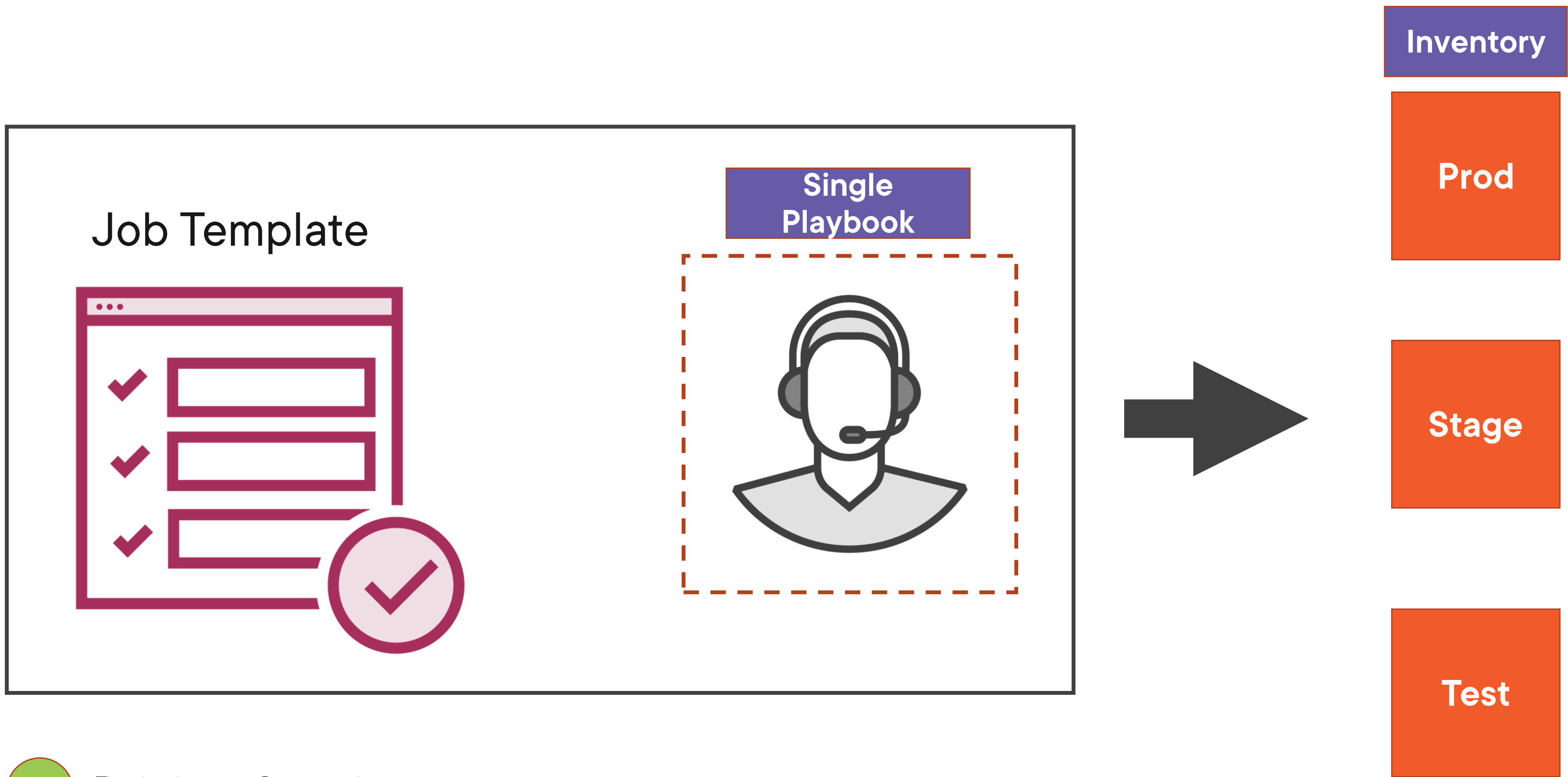


Low barrier to entry

Push-button deployment: Job templates

Benefits of job template

- Drive consistency
- Multiple job templates
- Workflow analyzer



 Driving Consistency 



Security and Auditability



**Secure credential
management**

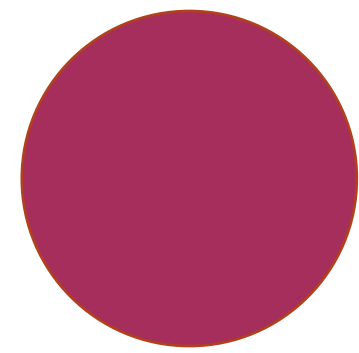


Accountability

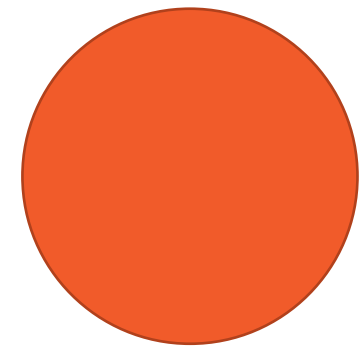


Authentication

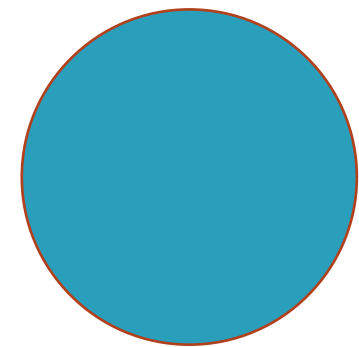
Default: Machine Types



Credential
Type 1



Credential
Type 2



Credential
Type 3



Security and Auditability



**Secure credential
management**

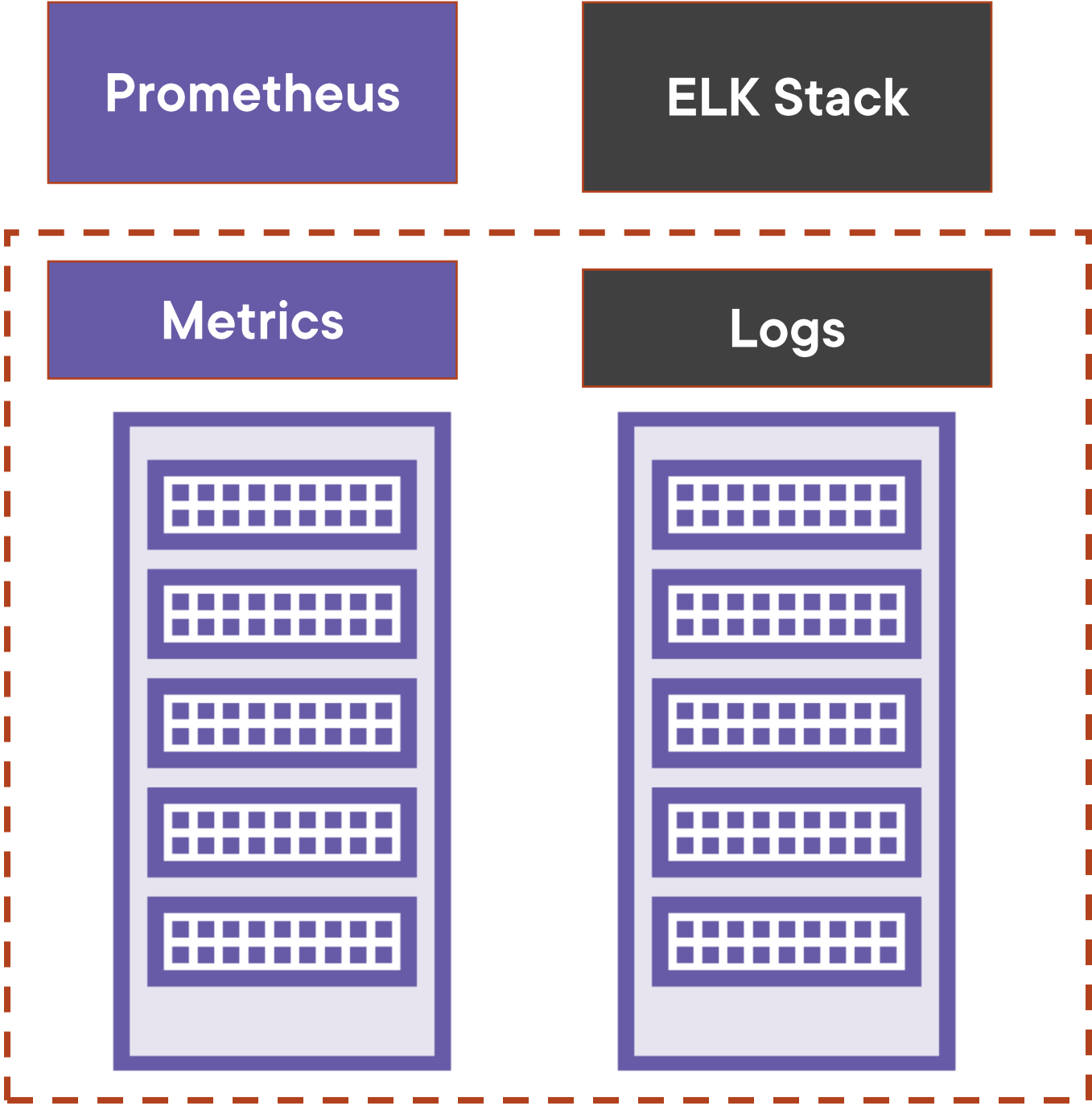


Accountability



Authentication

Centralize logs and metrics



Security and Auditability



**Secure credential
management**



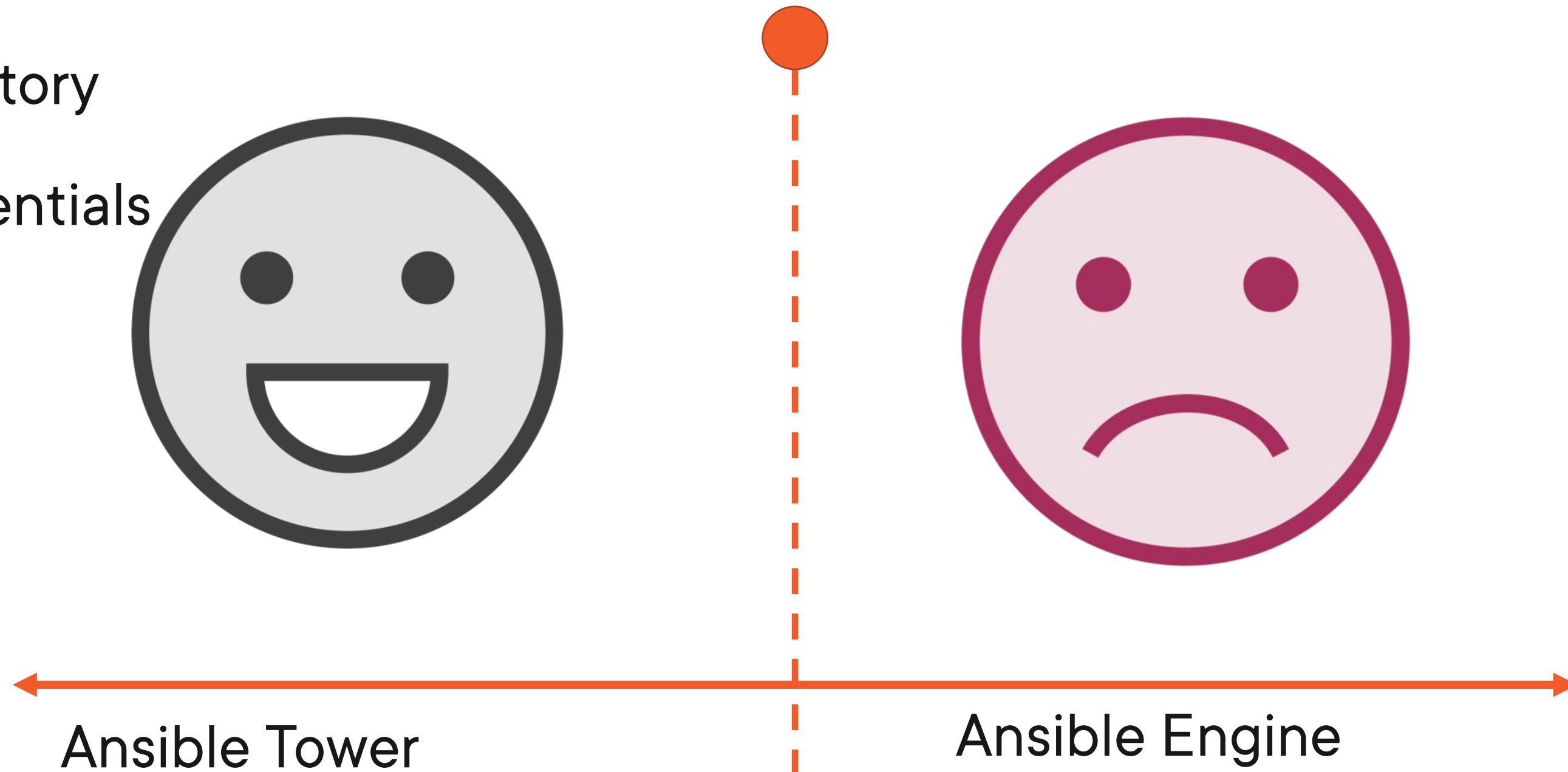
Accountability



Authentication

- Jobs
- Templates
- Inventory
- Credentials

Permission Structure



The Tower API

Highlighting the API

Browser or CURL

API functions

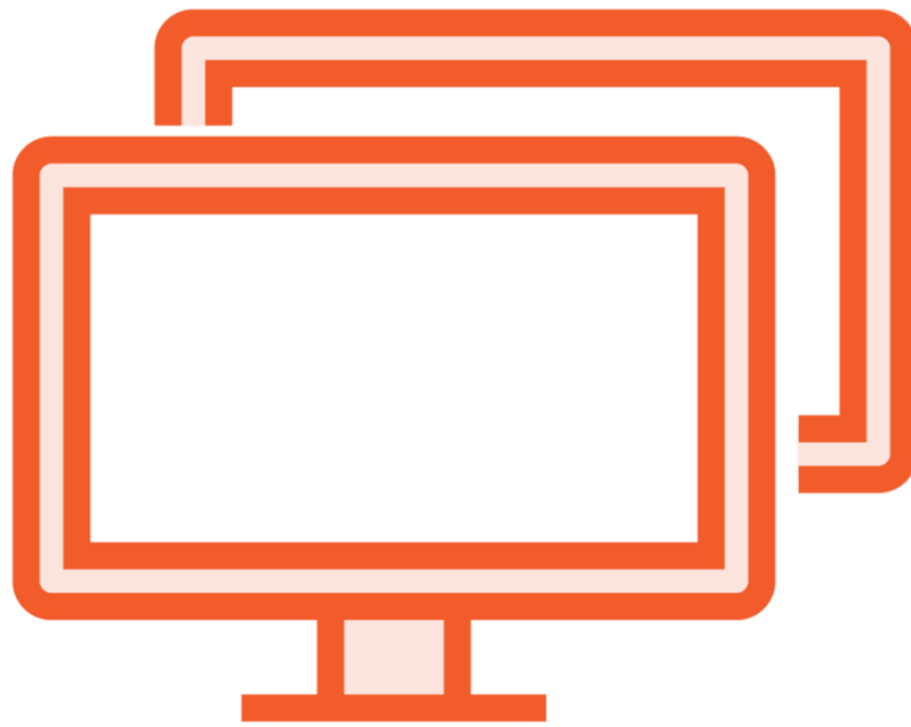
Pretty format

Connect to the API

Primary key



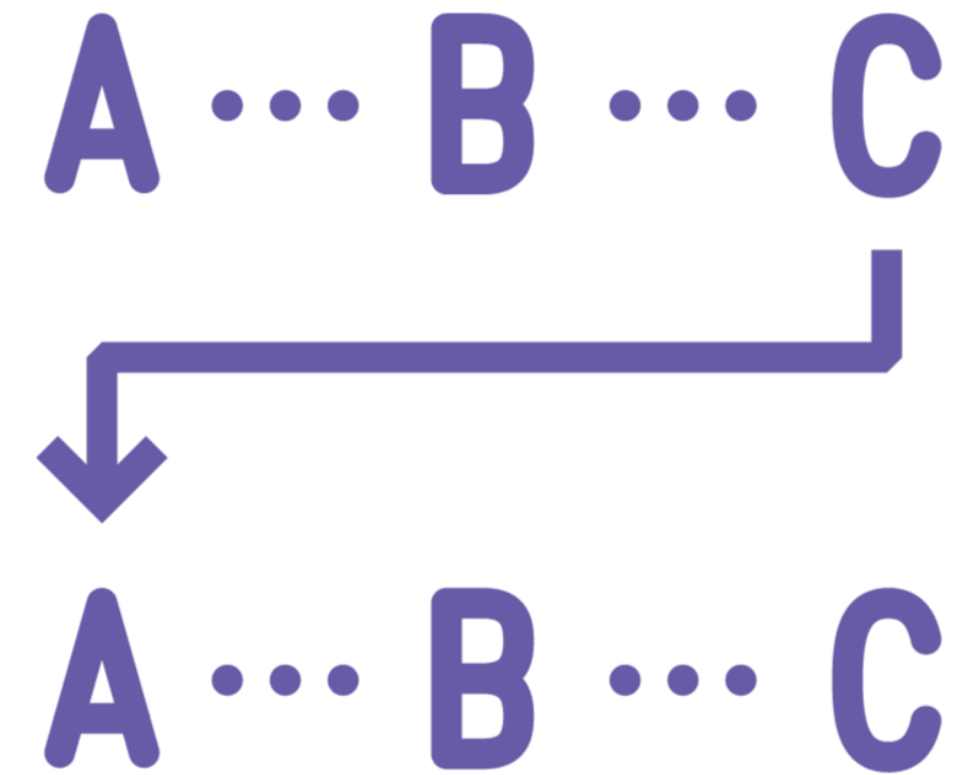
Managing Access Control



Organization

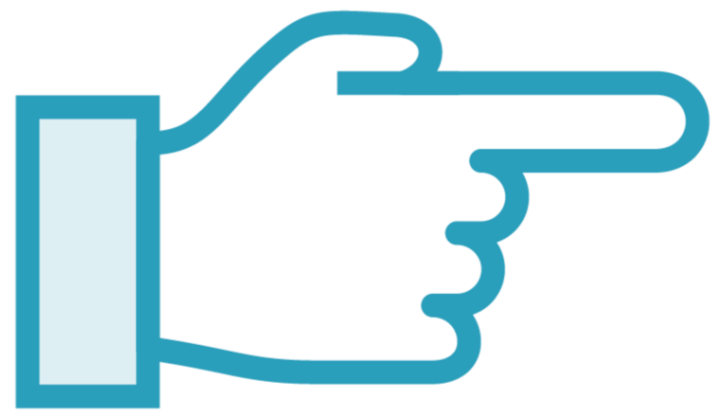


The concept of teams



Teams and roles

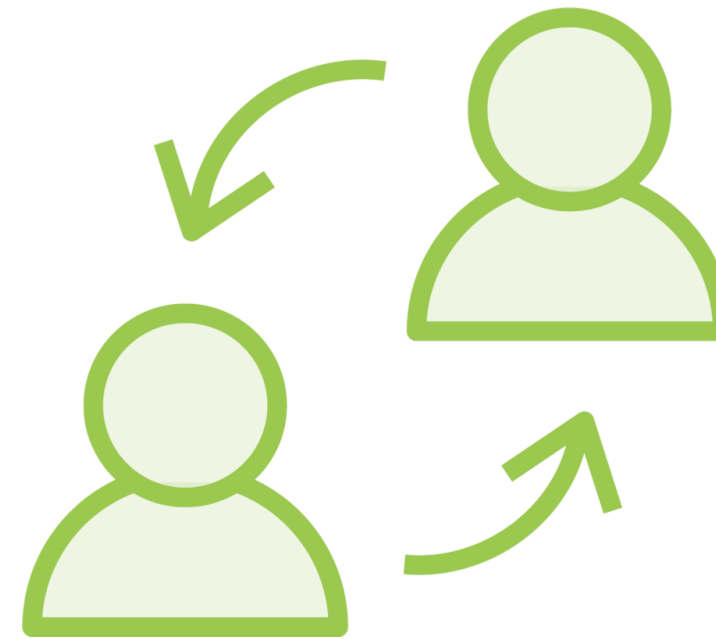
Setting up the User Base



**Detailing
organizations**



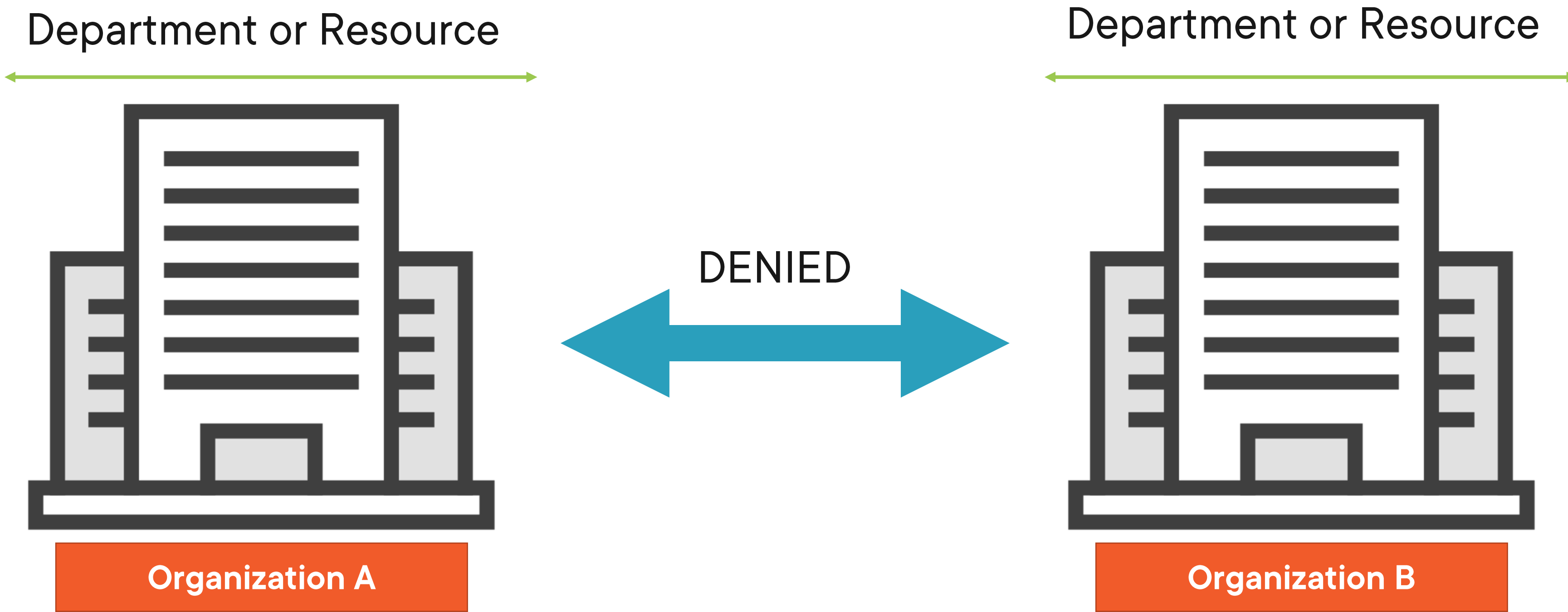
Teams



**Teams and
roles**



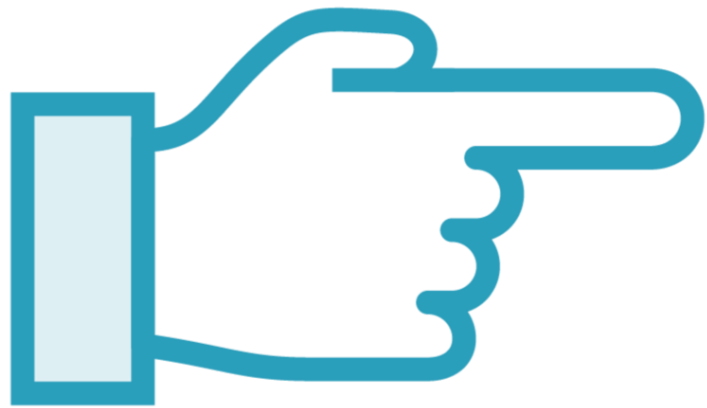
**Users and
roles**



 Projects, inventories, credentials, templates 



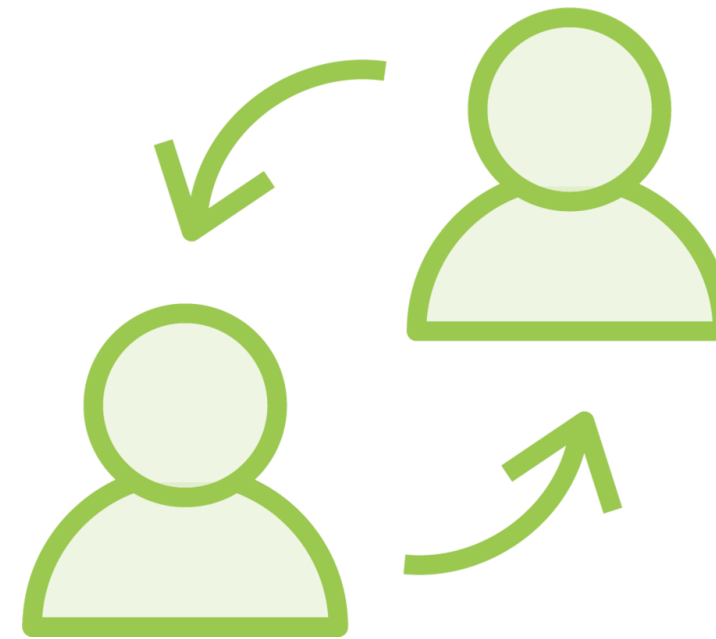
Setting up the User Base



**Detailing
organizations**



Teams

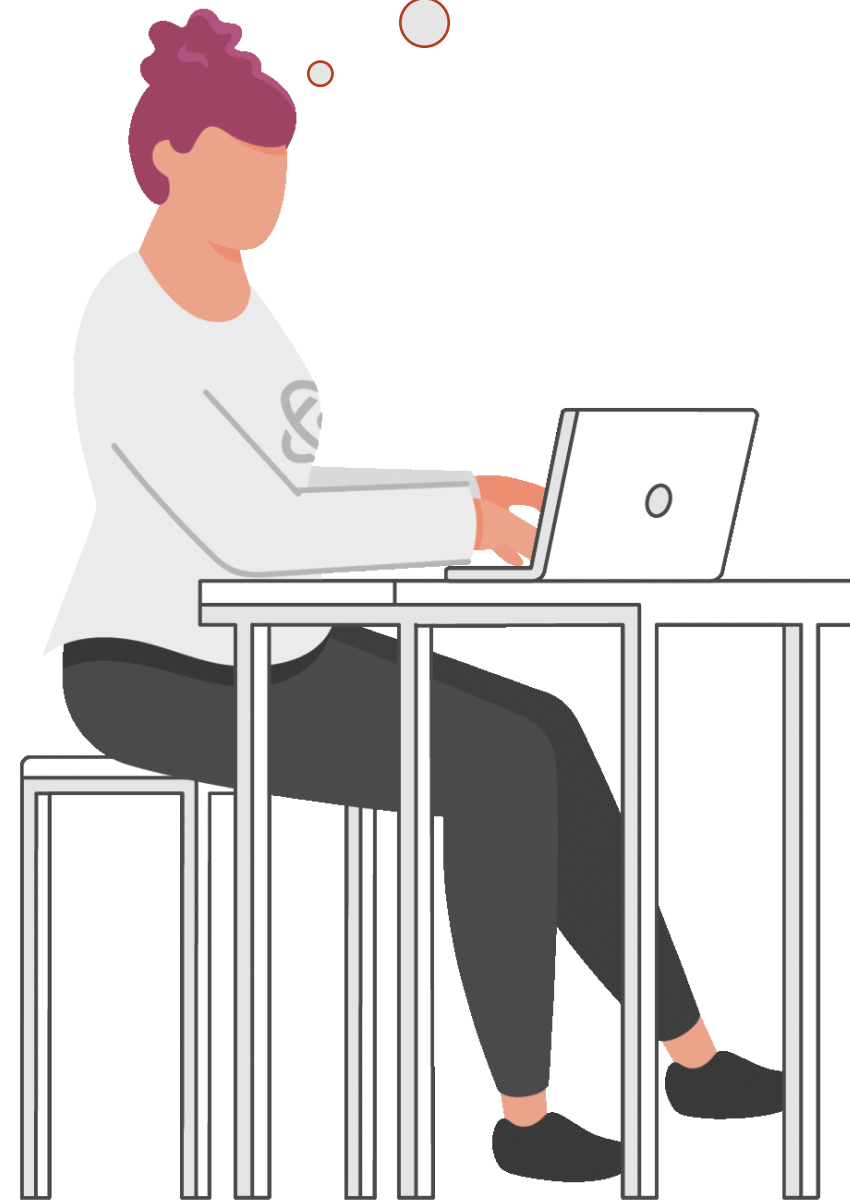


**Teams and
roles**

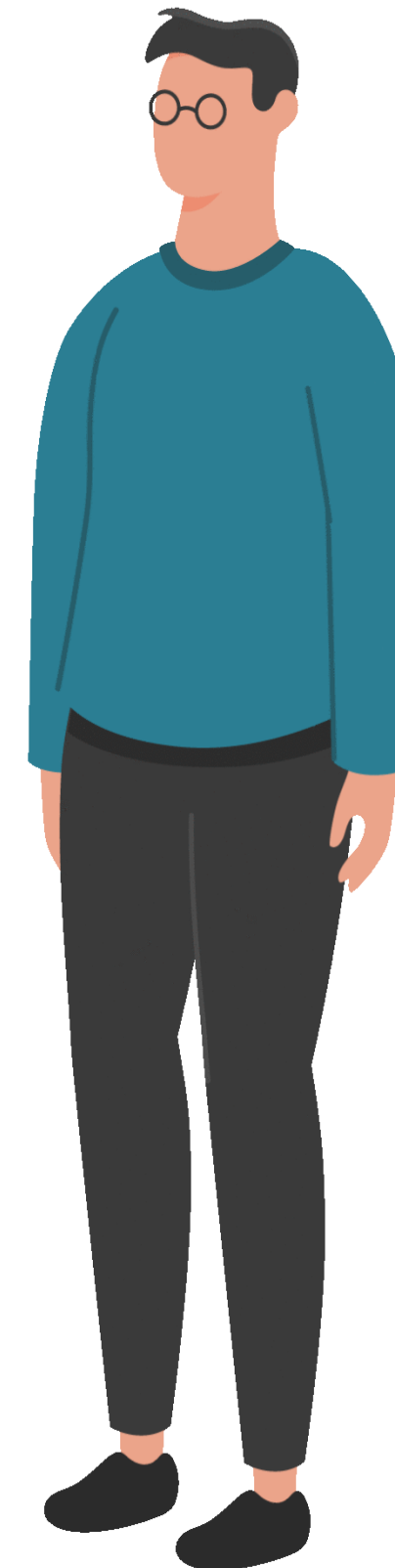


**Users and
roles**

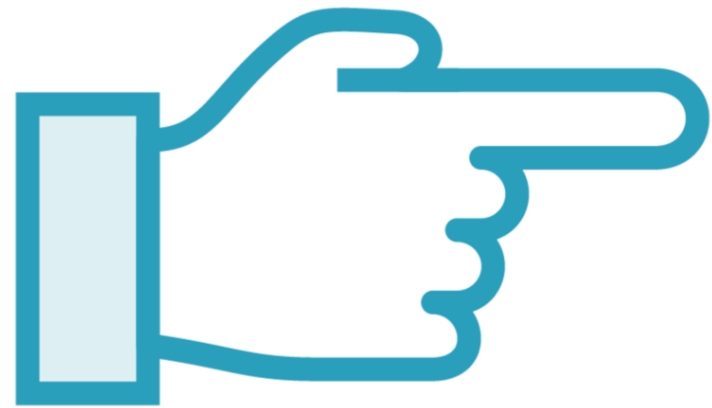
**Better to
assign to a
team**



Team Developers



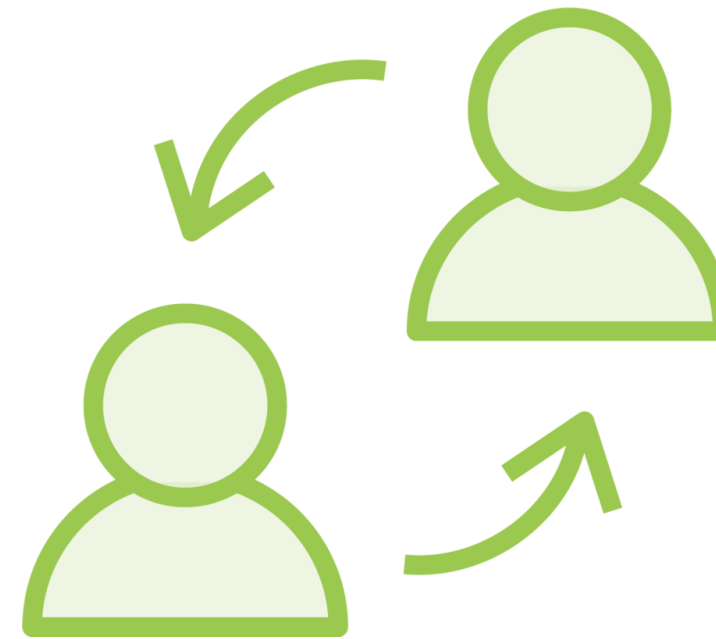
Setting Up the User Base



**Detailing
organizations**



Teams

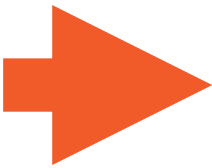


**Teams and
roles**



**Users and
roles**

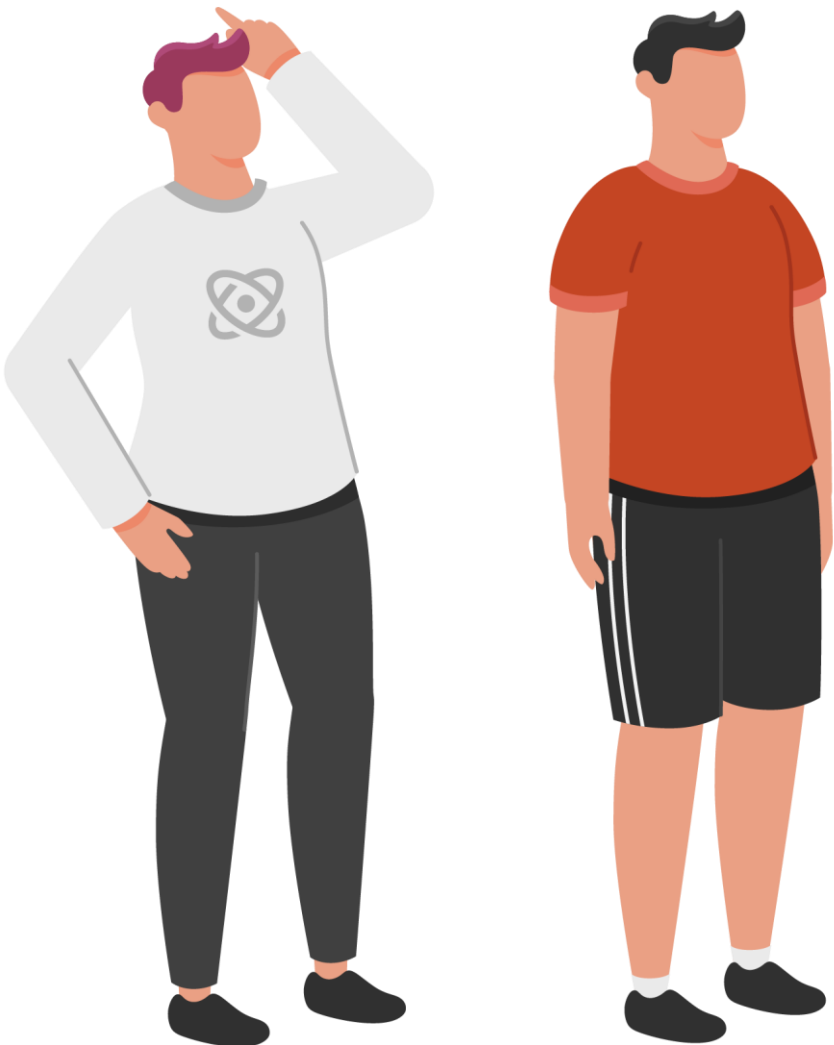
Keys to the kingdom



Normal User



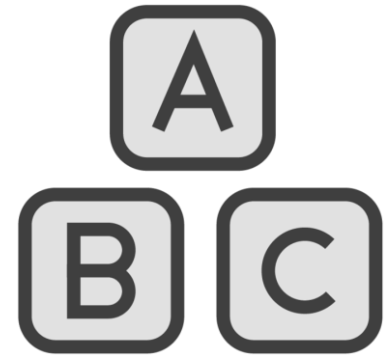
System Auditor



System Administrator



Setting Up the User Base



Integration with enterprise authentication



Assigning roles to different users



Role precedence





Enterprise integrations

Four authentication methods

- Session
- Basic
- OAuth2 Tokens
- Single Sign-on (SSO)



Types of Authentication

Session authentication

Basic authentication

OAuth token authentication

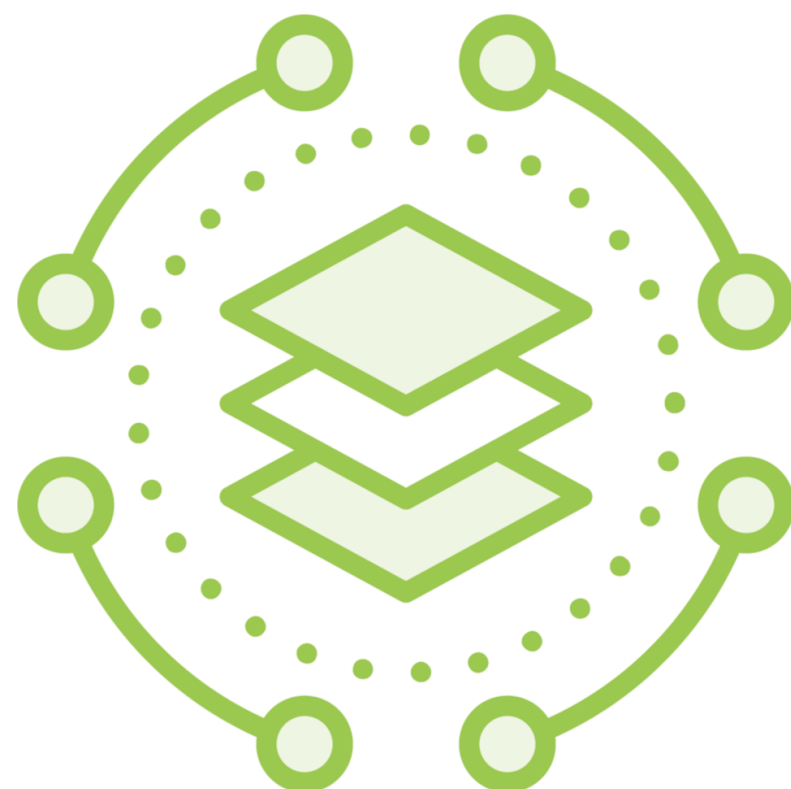
SSO authentication



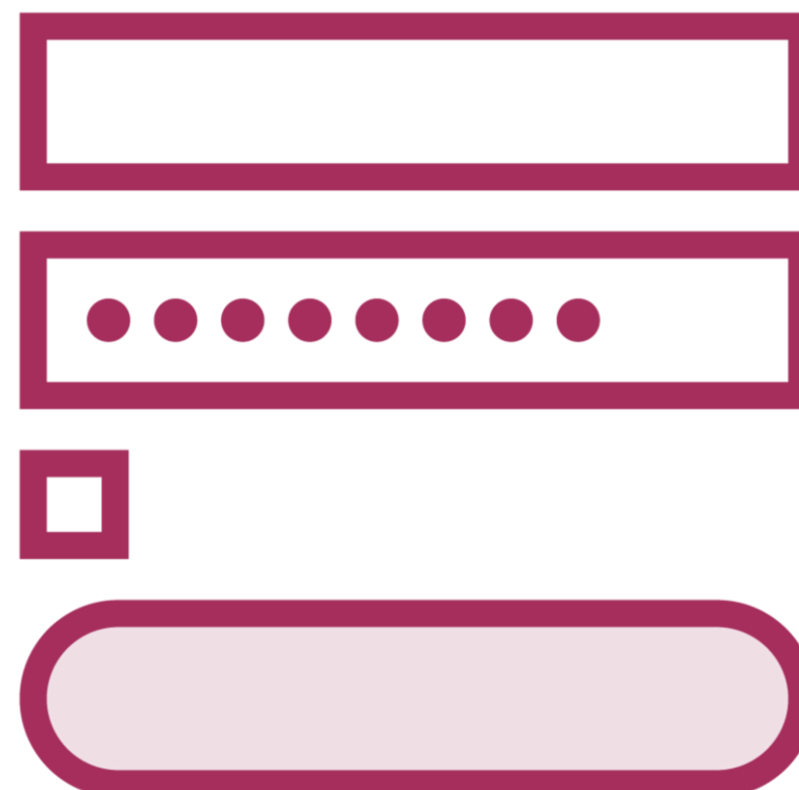
The Inventory



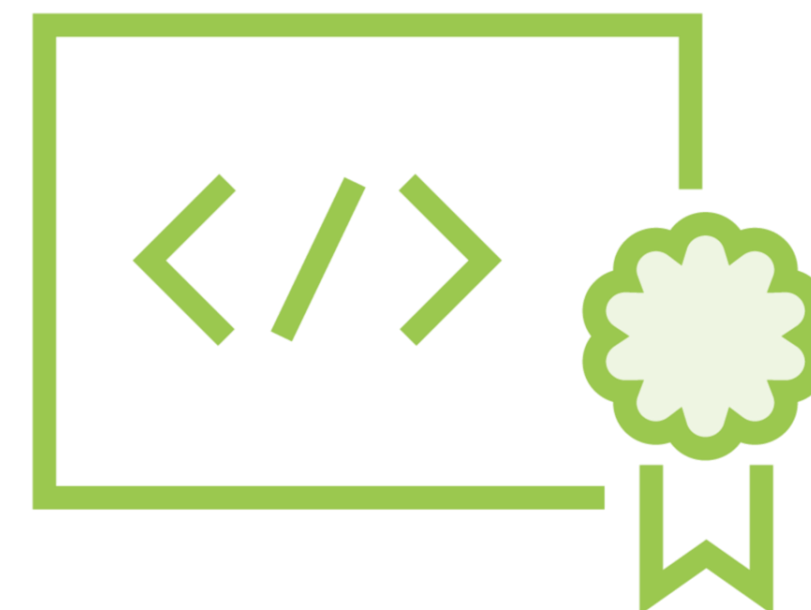
**Highlighting
inventories**



**Applying
variables**

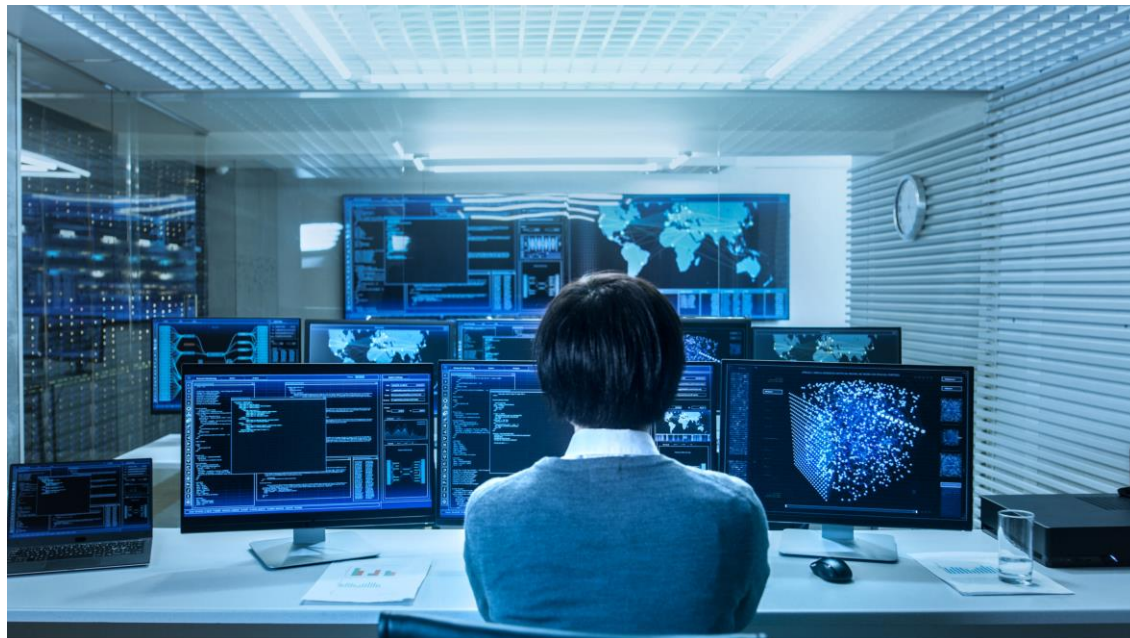


**Inventory and
credentials**



Inventory types

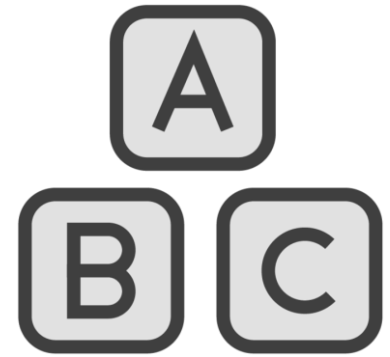




Inventory Types

- Static inventory
- Dynamic inventory
- Dynamic inventory: AWS example
- Filter-based inventory

Credentials



Managing credentials



Credentials force authentication



Machine, inventory sources, version control and network devices



Additional Ansible Objects

Ansible projects

**Update revision on
launch**

Job template

**Job template
requirements**

Centralized logging

Metrics



Splunk

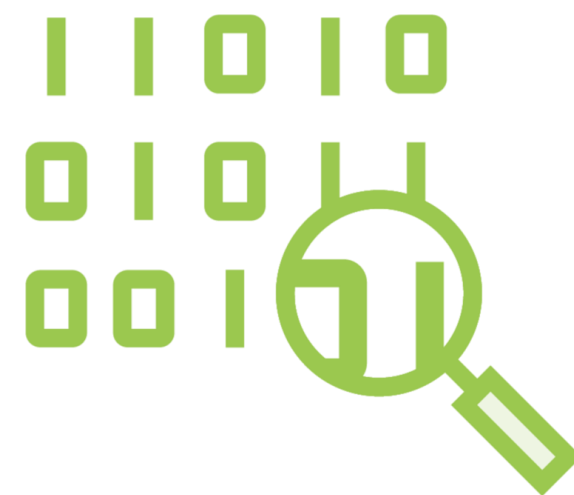
Loggly

Sumologic

ELK stack



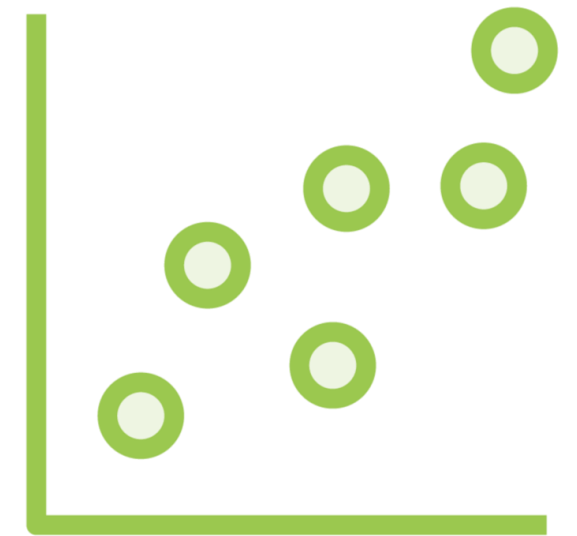
Data Processing



Storage



Visualize



Ansible Tower Centralized Logging



Final Ansible Objects

Ansible projects

**Update revision on
launch**

Job template

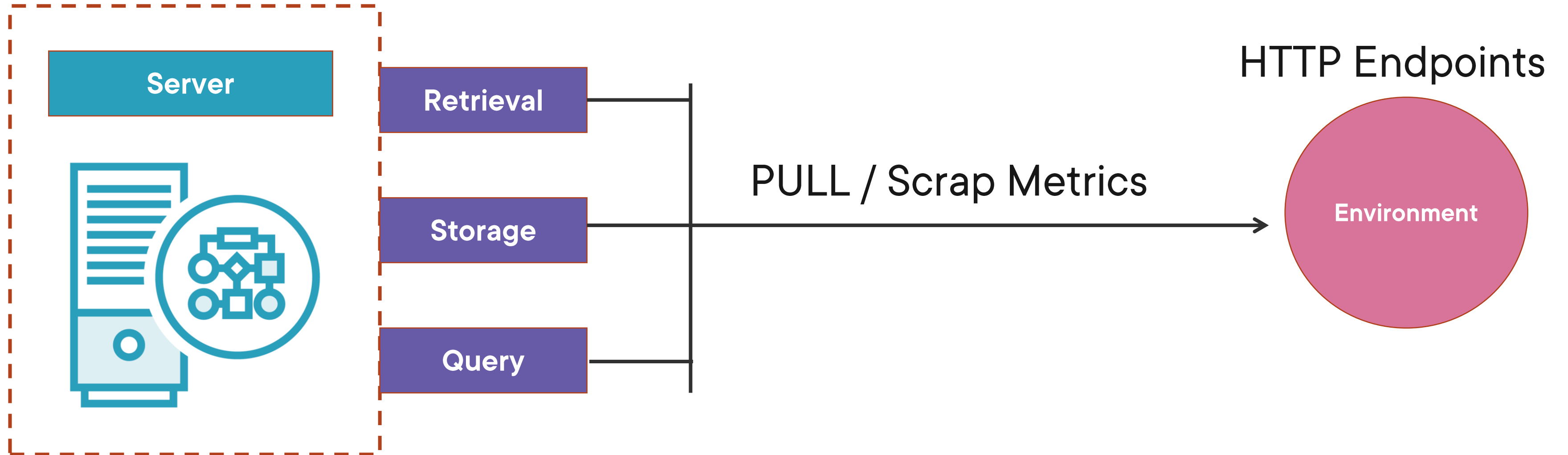
**Job template
requirements**

Centralized logging

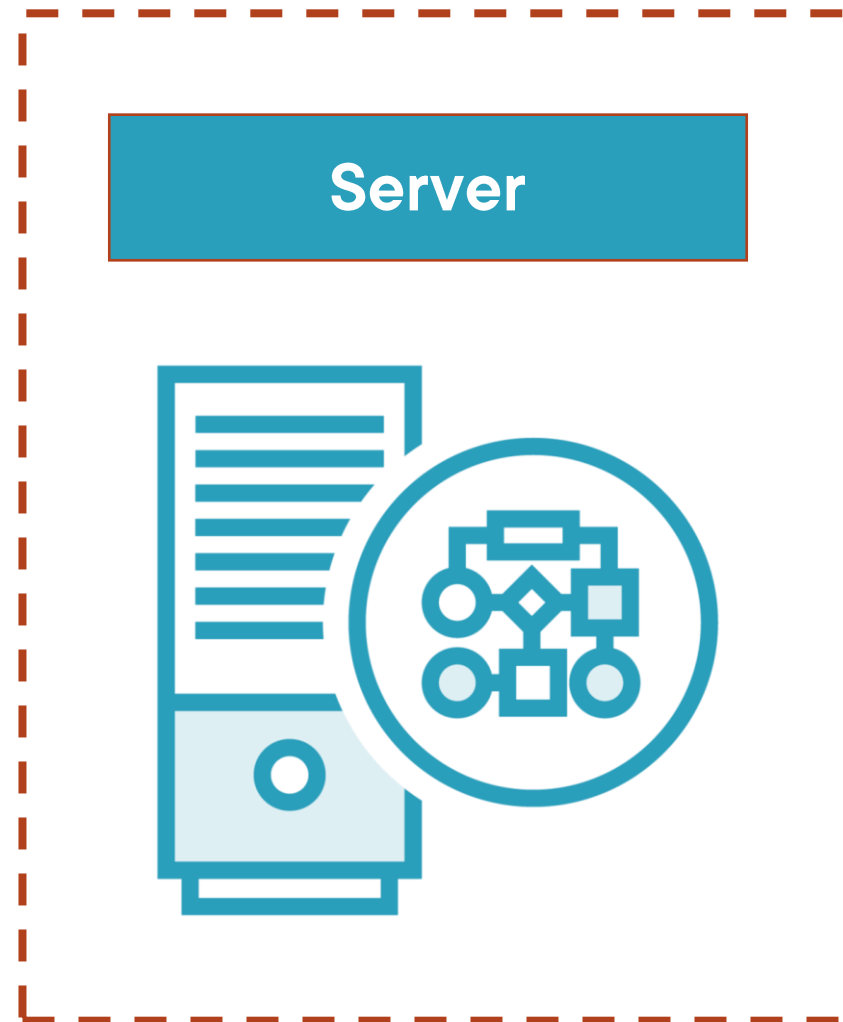
Metrics



Prometheus



Prometheus



Retrieval

Storage

Query

O.S Metrics
Tower Metrics

Node Exporter

Environment

Grafana Dashboards



Module Summary

