



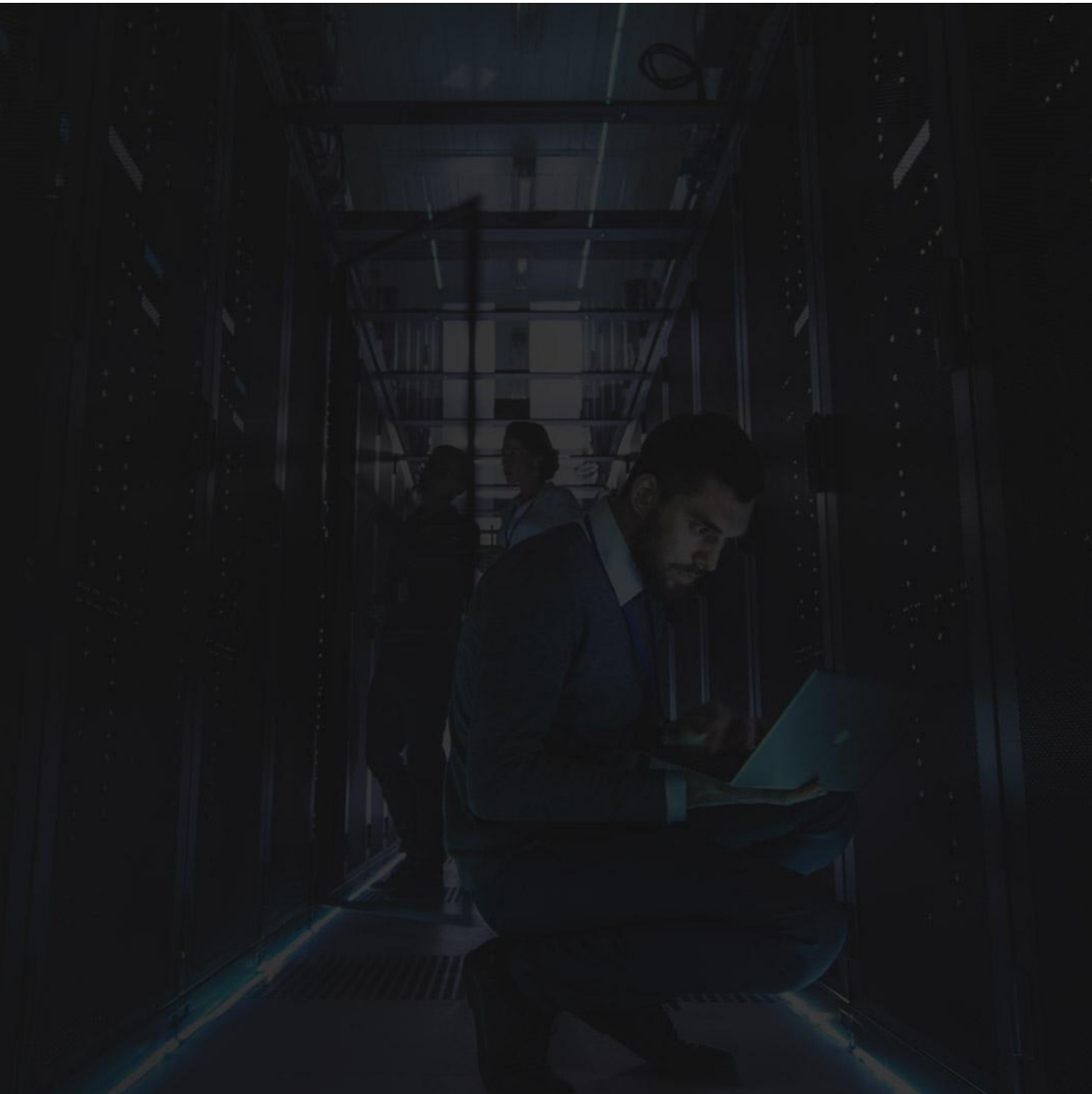
Virtualization Fundamentals

ine.com



Question-1

ine.com



Question-1

- + When purchasing a server, which of the following elements are typically not included?
- + [1.12]

☐

A. CPU

☐

B. KVM

☐

C. RAM

☐

D. HDD

☐

E. NIC

ANSWER

- + When purchasing a server, which of the following elements are typically not included?
- + [1.12]

☐

A. CPU

☒

B. KVM

☐

C. RAM

☐

D. HDD

☐

E. NIC



Question-2

ine.com



Question-2

+ At its most basic level, which of the following answers provides a definition of a Virtual Machine?

+ [1.12]

☐

A. A single physical server running two or more operating systems (OS).

☐

B. A single physical server with two or more CPUs

☐

C. A single physical server with two or more storage drives

☐

D. Two or more servers paired via a network connection

☐

E. Two or more servers sharing a single video display

ANSWER

+ At its most basic level, which of the following answers provides a definition of a Virtual Machine?

+ [1.12]



A. A single physical server running two or more operating systems (OS).



B. A single physical server with two or more CPUs



C. A single physical server with two or more storage drives



D. Two or more servers paired via a network connection



E. Two or more servers sharing a single video display



Question-3

ine.com



Question-3

+ Which software/hardware element is critical for determining the quantity of vCPUs a single server supports?

+ [1.12]

☐

A. How many CPUs that server contains

☐

B. How many cores per CPU that server contains

☐

C. The total quantity of simultaneous threads that can be processed.

☐

D. None of these answers are correct

ANSWER

- + Which software/hardware element is critical for determining the quantity of vCPUs a single server supports?
- + [1.12]

☐

A. How many CPUs that server contains

☐

B. How many cores per CPU that server contains

☒

C. The total quantity of simultaneous threads that can be processed.

☐

D. None of these answers are correct



Question-4

ine.com



Question-4

+ Match the following terms related to virtualization with their definitions. [1.12]

Guest OS

Manages and allocates hardware from physical machine to VMs

Host

An individual virtual machine

Hypervisor

Physical Server running the virtual machines

ANSWER

+ Match the following terms related to virtualization with their definitions. [1.12]

Guest OS

An individual virtual machine

Host

Physical Server running the virtual machines

Hypervisor

Manages and allocates hardware from physical machine to VMs



Question-5

ine.com



Question-5

+ Which of the following are examples of Hypervisors?

+ [1.12]

☐

A. VMware vCenter

☐

B. Microsoft HyperV

☐

C. Red Hat KVM

☐

D. Citrix XenServer

☐

E. All these answers are correct

ANSWER

+ Which of the following are examples of Hypervisors?

+ [1.12]

☐

A. VMware vCenter

☐

B. Microsoft HyperV

☐

C. Red Hat KVM

☐

D. Citrix XenServer

☒

E. All these answers are correct



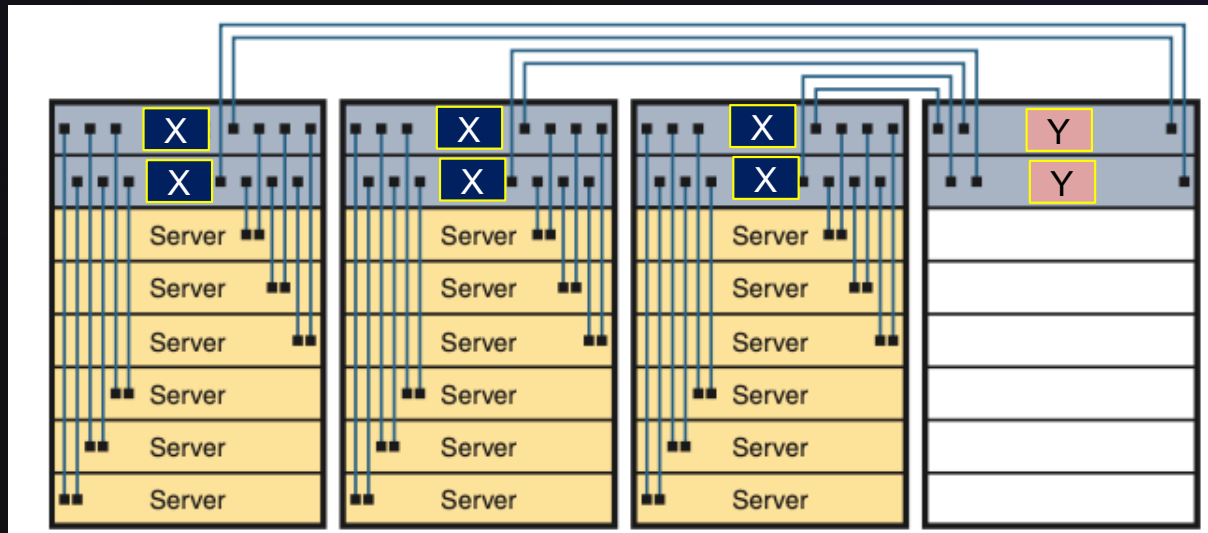
Question-6

ine.com



Question-6

- + In the diagram below showing the interconnections between servers in a data center, identify the correct acronyms for the devices represented as “X” and “Y”. (Select two answers) [1.12]

☐

A. X=EoR

☐

C. Y=EoR

E. X=ToC

☐

B. X=ToR

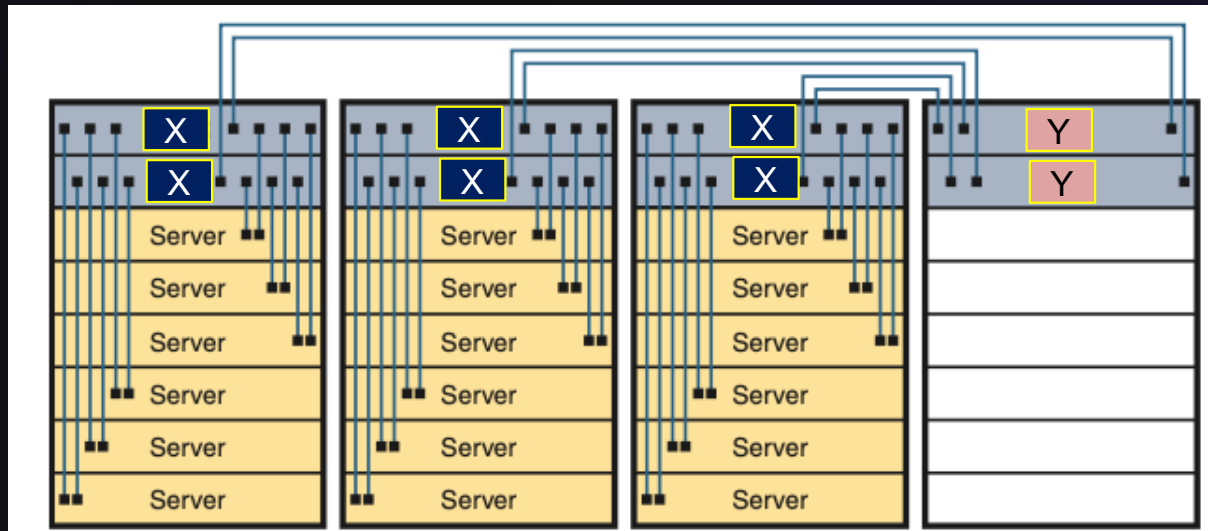
☐

D. Y=ToR

E. Y=EoC

ANSWER

- + In the diagram below showing the interconnections between servers in a data center, identify the correct acronyms for the devices represented as “X” and “Y”. (Select two answers) [1.12]



A. X=EoR



C. Y=EoR



B. X=ToR



D. Y=ToR

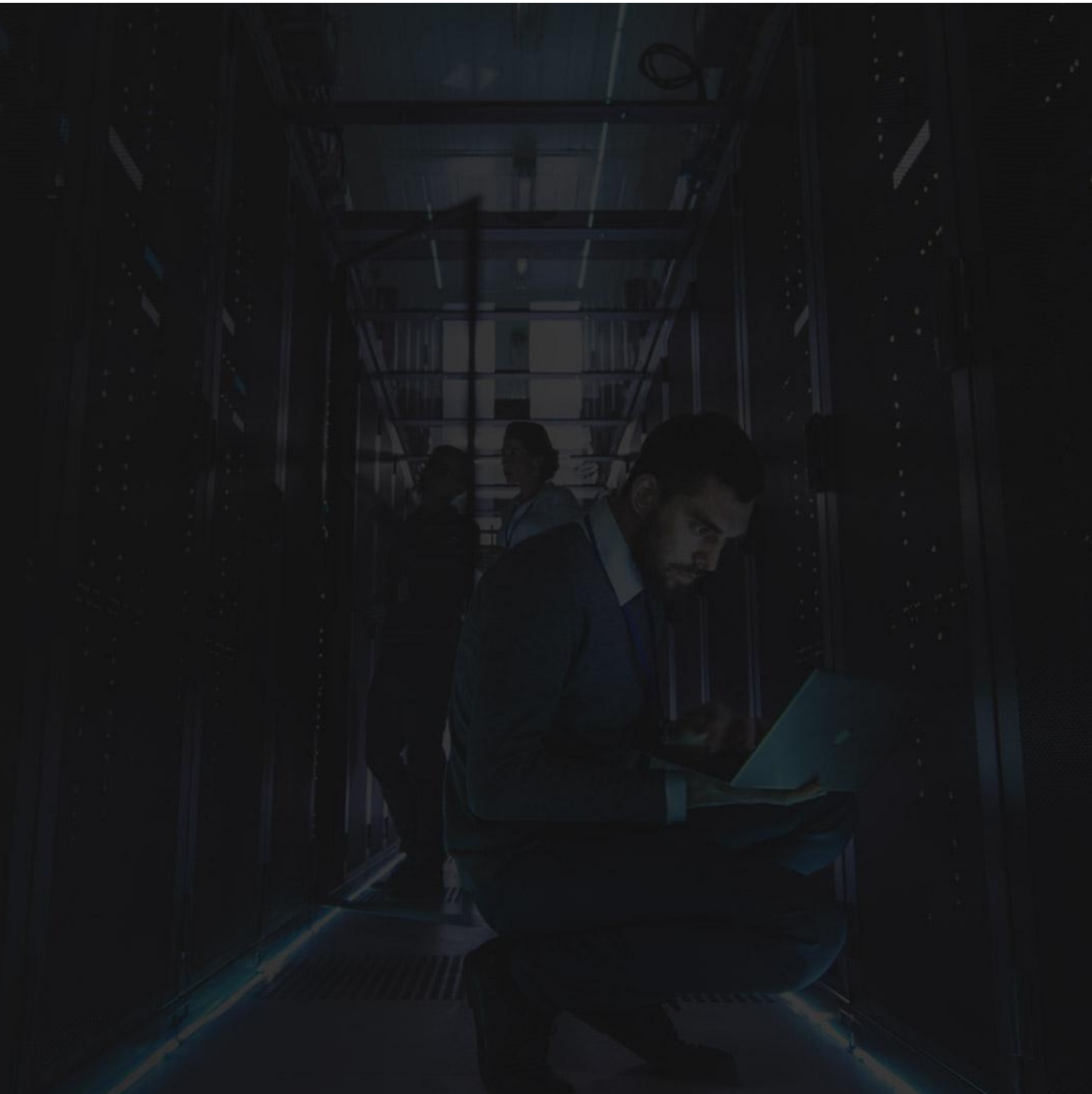
E. X=ToC

F. Y=EoC



Question-7

ine.com



Question-7

+ Which of the following are typically options you'd have to select before creating a virtual machine?

+ (Select two answers)

+ [1.12]

☐

A. Quantity of vCPUs

☐

B. Amount of RAM needed

☐

C. Type of KVM required

☐

D. Selection of graphics adapter

☐

E. Rack size of host

ANSWER

+ Which of the following are typically options you'd have to select before creating a virtual machine?

+ (Select two answers)

+ [1.12]



A. Quantity of vCPUs



B. Amount of RAM needed



C. Type of KVM required



D. Selection of graphics adapter



E. Rack size of host



Question-8

ine.com



Question-8

+ Which of the following is a product offering by Cisco that can be used in place of a virtual switch that may come bundled with a hypervisor?

+ [1.12]

☐

A. ASA

☐

B. CSR

☐

C. KVM

☐

D. Nexus 1000v

☐

E. None of these answer are correct

ANSWER

+ Which of the following is a product offering by Cisco that can be used in place of a virtual switch that may come bundled with a hypervisor?

+ [1.12]

☐

A. ASA

☐

B. CSR

☐

C. KVM

☒

D. Nexus 1000v

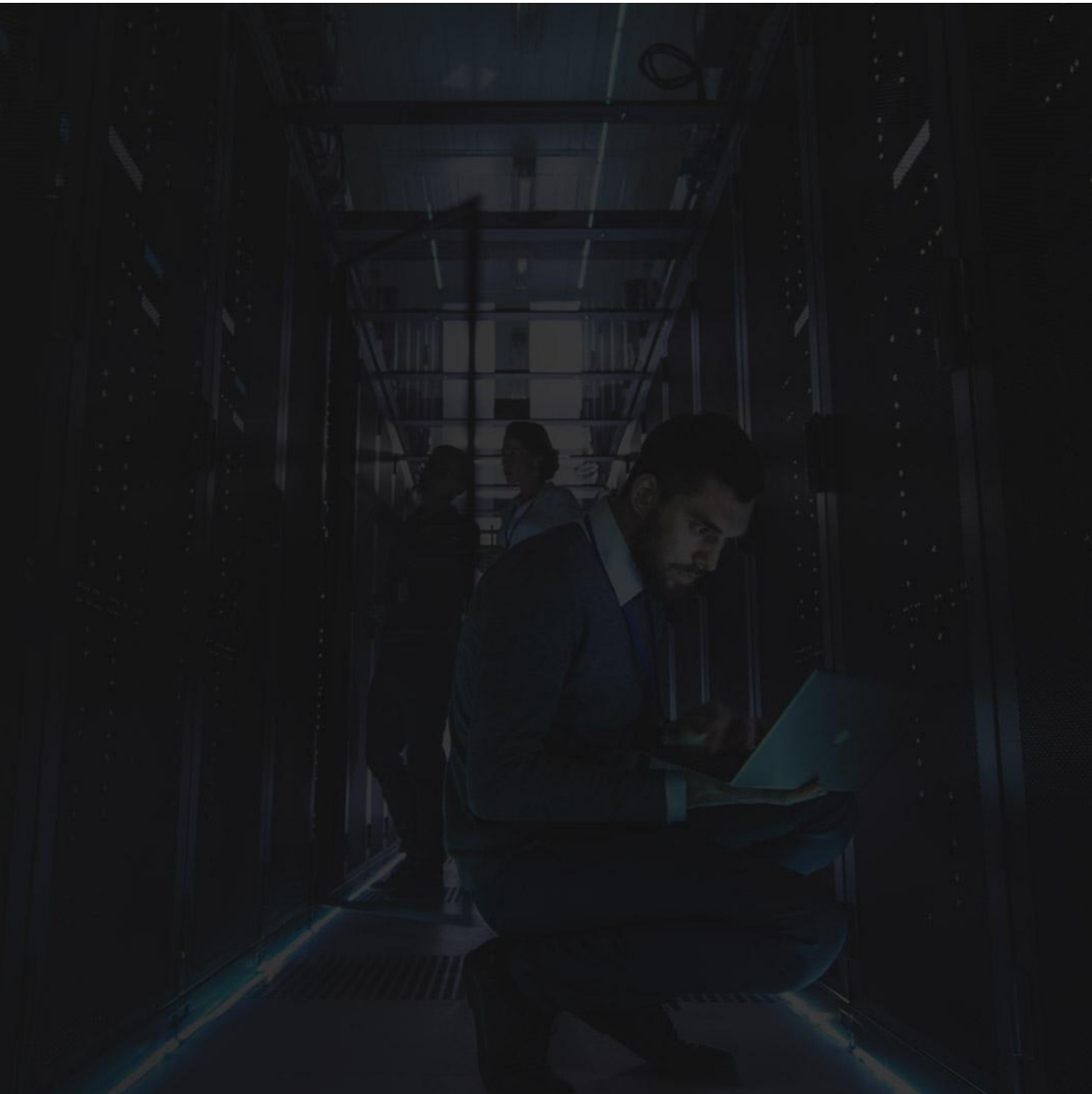
☐

E. None of these answer are correct



Question-9

ine.com



Question-9

+ Which of the following resources are commonly virtualized so that they can be shared among many virtual machines running within a single host server?

+ (Select three answers)

+ [1.12]

☐ A. Hypervisor

☐ B. NIC

☐ C. RAM

☐ D. Power

☐ E. CPU

ANSWER

+ Which of the following resources are commonly virtualized so that they can be shared among many virtual machines running within a single host server?

+ (Select three answers)

+ [1.12]

☐ A. Hypervisor

☒ B. NIC

☒ C. RAM

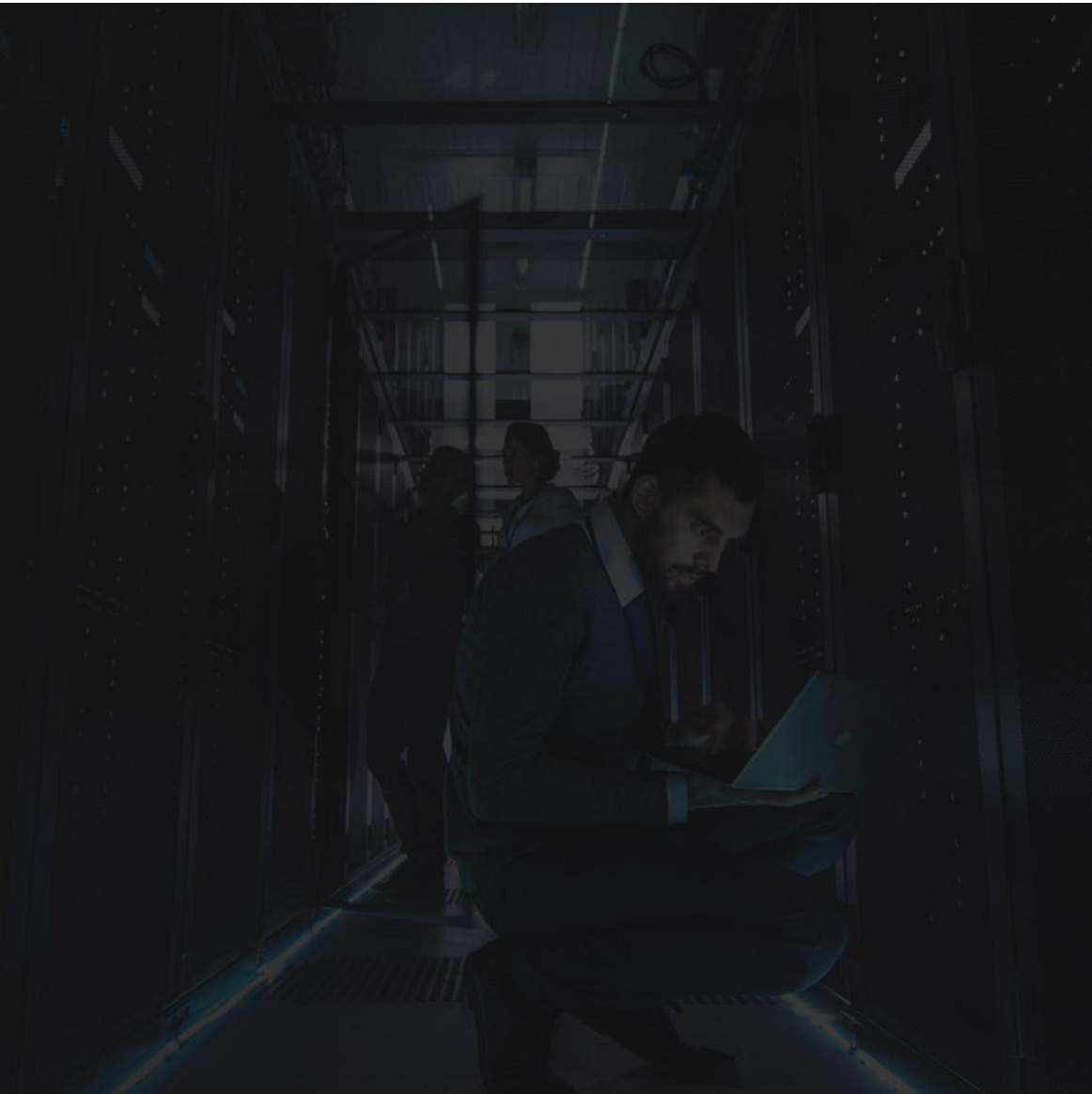
☐ D. Power

☒ E. CPU



Question-10

ine.com



Question-10

+ When using containerization in order to make an application more portable, what components would you typically expect to find within the container?

+ (Select three answers)

+ [1.12]

☐

A. An Operating System (OS)

☐

B. Power Consumption code

☐

C. Network Adapter Firmware

☐

D. Application code

☐

E. Application Libraries

ANSWER

+ When using containerization in order to make an application more portable, what components would you typically expect to find within the container?

+ (Select three answers)

+ [1.12]



A. An Operating System (OS)



B. Power Consumption code



C. Network Adapter Firmware



D. Application code



E. Application Libraries



Question-11

ine.com



Question-11

- + Which of the following comparisons between Containers and Virtual Machines (VMs) is true?
- + (Select two answers)

☐

A. Containers are typically smaller in size than Virtual Machines

☐

B. Virtual Machines are typically smaller in size than Containers

☐

C. Containers are primarily designed to virtualize hardware so that multiple operating systems can be run on a single machine.

☐

D. VMs are primarily designed to virtualize hardware so that multiple operating systems can be run on a single machine.

ANSWER

- + Which of the following comparisons between Containers and Virtual Machines (VMs) is true?
- + (Select two answers)



A. Containers are typically smaller in size than Virtual Machines



B. Virtual Machines are typically smaller in size than Containers



C. Containers are primarily designed to virtualize hardware so that multiple operating systems can be run on a single machine.



D. VMs are primarily designed to virtualize hardware so that multiple operating systems can be run on a single machine.



Question-12

ine.com



Question-12

+ A [*fill-in-the-blank*] might be taken of a virtual machine to preserve and record its operational state in time so that it can be reverted back to that state later on.

+ [1.12]

☐

A. snapshot

☐

B. revert

☐

C. timecapsule

☐

D. snapchat

☐

E. capture

ANSWER

+ A [*fill-in-the-blank*] might be taken of a virtual machine to preserve and record its operational state in time so that it can be reverted back to that state later on.

+ [1.12]



A. snapshot



B. revert



C. timecapsule



D. snapchat



E. capture



Question-13

ine.com



Question-13

- + Which type of Hypervisor is also called a “native” or “bare metal” hypervisor?
- + [1.12]

☐

A. Type-1

☐

B. Type-2

☐

C. Type-3

☐

D. Type-A

☐

E. Type-B

ANSWER

- + Which type of Hypervisor is also called a “native” or “bare metal” hypervisor?
- + [1.12]

☒ A. Type-1

☐ B. Type-2

☐ C. Type-3

☐ D. Type-A

☐ E. Type-B



Question-14

ine.com



Question-14

- + Customer-A, Customer-B and Customer-C all have devices connected to Router-X. Given this situation, what benefits may be obtained by implementing VRFs on this router?
- + [1.12]

- ☐ A. To encrypt inter-customer traffic
- ☐ B. To encrypt intra-customer traffic
- ☐ C. To keep customer traffic isolated from each other.
- ☐ D. To provide efficient routing of traffic between customers
- ☐ E. To provide shared QoS policies between customers.

ANSWER

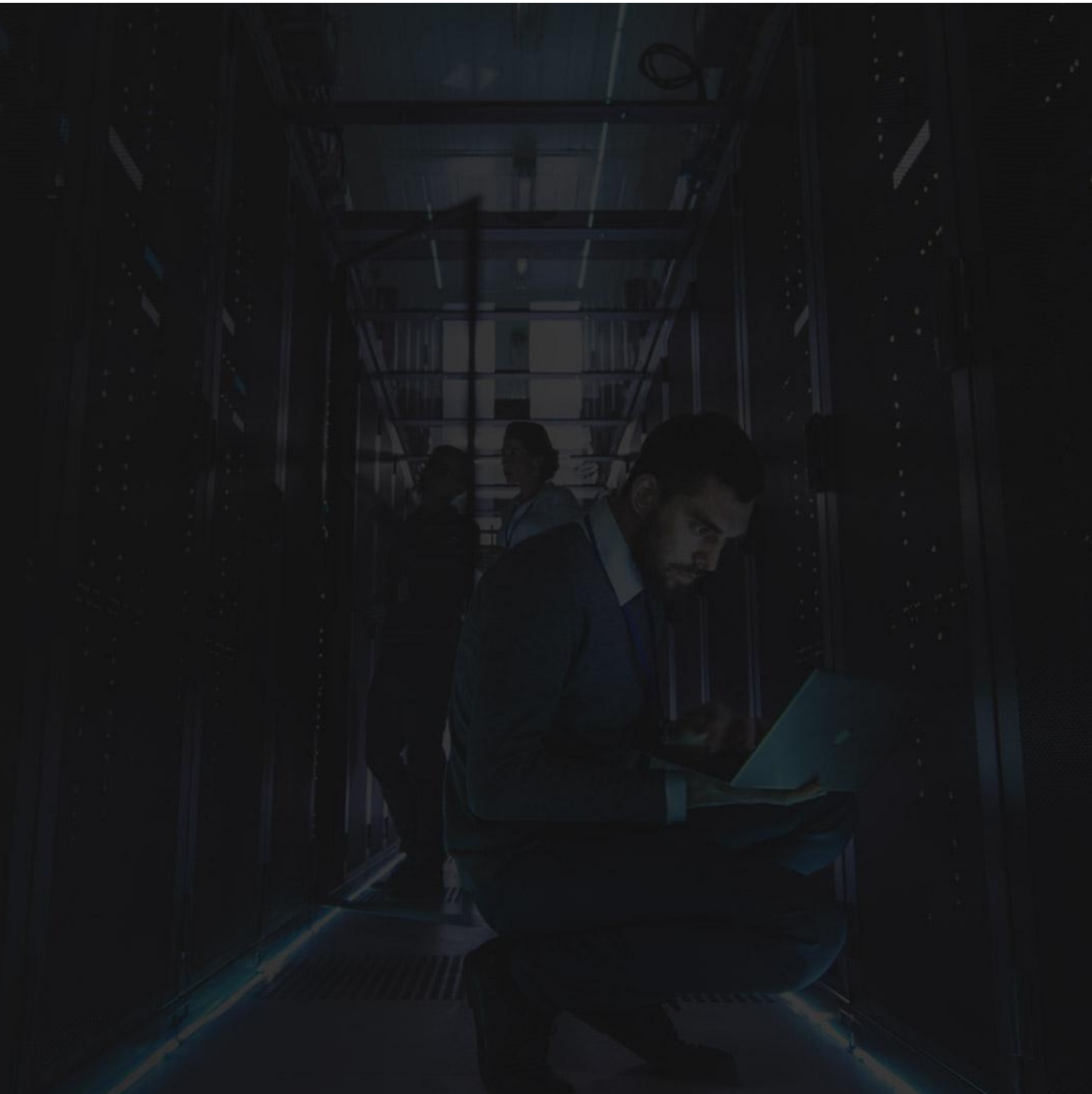
- + Customer-A, Customer-B and Customer-C all have devices connected to Router-X. Given this situation, what benefits may be obtained by implementing VRFs on this router?
- + [1.12]

- ☐ A. To encrypt inter-customer traffic
- ☐ B. To encrypt intra-customer traffic
- ☒ C. To keep customer traffic isolated from each other.
- ☐ D. To provide efficient routing of traffic between customers
- ☐ E. To provide shared QoS policies between customers.



Question-15

ine.com



Question-15

- + Which of the following are examples of Type-2 Hypervisors?
- + (Select two answers)
- + [1.12]

☐

A. VMware ESXi

☐

B. VirtualBox

☐

C. Citrix XEN

☐

D. VMware Workstation

☐

E. Microsoft Hyper-V

ANSWER

- + Which of the following are examples of Type-2 Hypervisors?
- + (Select two answers)
- + [1.12]

☐

A. VMware ESXi

☒

B. VirtualBox

☐

C. Citrix XEN

☒

D. VMware Workstation

☐

E. Microsoft Hyper-V



Question-16

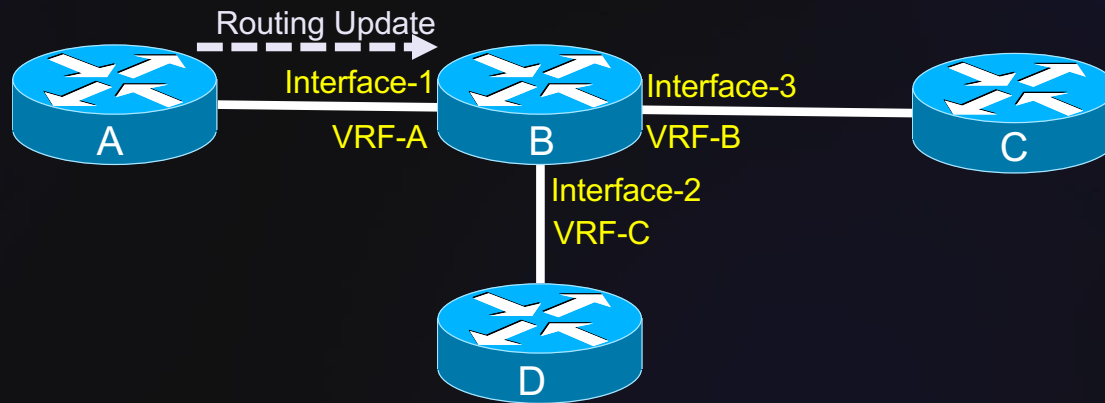
ine.com



Question-16

+ Given the following diagram, when a routing update arrives on interface-1 of the router, which of the following answers will be true?

+ [1.12]



☐ A. The update will be forwarded on interface-2

☐ B. The update will be forwarded on interface-3

☐ C. The update will be forwarded on both interface-2 and interface-3

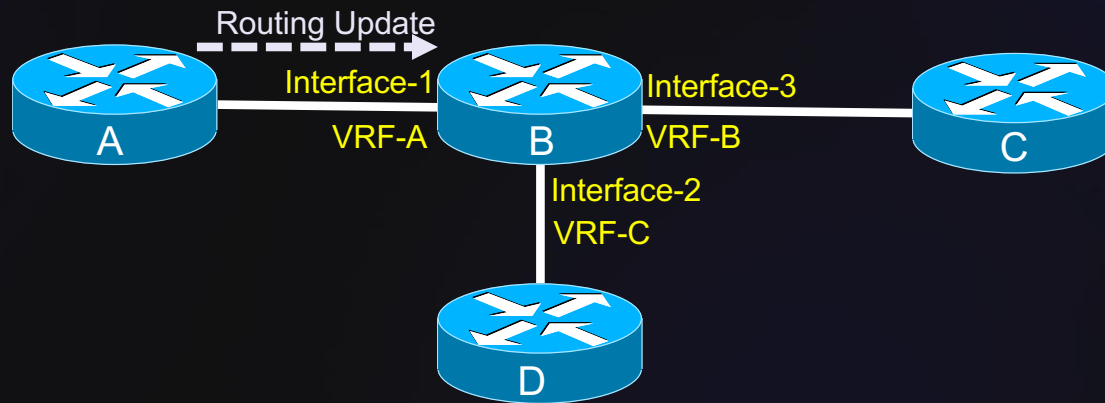
☐ D. The update will be processed but not forwarded

☐ E. The update will be dropped.

Question-16

+ Given the following diagram, when a routing update arrives on interface-1 of the router, which of the following answers will be true?

+ [1.12]



☐ A. The update will be forwarded on interface-2

☐ B. The update will be forwarded on interface-3

☐ C. The update will be forwarded on both interface-2 and interface-3

☒ D. The update will be processed but not forwarded

☐ E. The update will be dropped.



Thanks for Watching!